

RCR Advanced Technologies (RCR AT) is an award winning, highly innovative engineering company with a track record of engineering solutions for complex maritime, energy and mining sectors.



## LOCATIONS

Bunbury and Perth



## EMPLOYEES

Over 500



## OWNERSHIP

100% Western Australian owned



Temple Road, PICTON EAST  
WA 6229



(08) 9726 4555



[www.rcradvancedtech.com.au](http://www.rcradvancedtech.com.au)

## RCR ADVANCED TECHNOLOGIES IS THE MANUFACTURER OF THE MARINE SAFE ACCESS SOLUTION (MSAS).

Choose MSAS for safe, reliable docking and deployment every time.

### DISCRIMINATORS

- Large long-tenure in-house design team established in 1979
- Experienced in the delivery of complex concept to commissioned integrated plant solutions in fixed and semi-mobile applications
- Award winning team
- Large library of proven application solutions with 1,500+ complex products in the market
- Electrical and control partners with Defence tenure
- Experience across multiple high standard sectors and clients
- Marine and challenging environment applications references
- Rapid design development and manufacture of bespoke solutions

### CAPABILITIES

- 45+ design in-house team
- High level Project Managers
- 70,000m<sup>2</sup> manufacturing workshop facilities
- Surface treatment
- Hydraulics and pneumatics
- Electronics and controls
- Manufacturing up to 150 tonne/week
- Design software packages inclusive of FEA, ANSYS and other
- 3D printing to improve concept development
- Product support services for all solutions design and supplied for equipment lifecycle
- Heat treatment
- Heavy machining and fabrication across multiple locations



**RCR Advanced Technologies**

### KEY CUSTOMERS AND PARTNERS

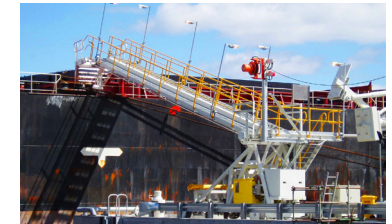
**BHP**

**RioTinto**



### QUALITY AND ACCREDITATION

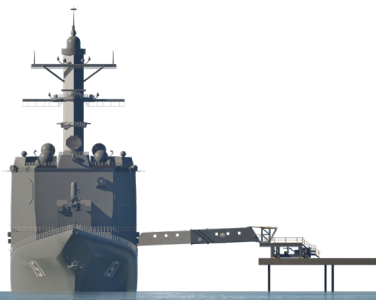
- 1951 ISO 17025 NATA
- 1994 ISO 9001 Quality
- 2009 ISO 45001 OHS
- 2016 ISO 14001 Environmental
- 2023 CC3 Quality Assurance



**The MSAS is a new benchmark in personnel access for carbon, safety, time and total cost of ownership**



Part of NRW Holdings (ASX: NWH)



OFI is an industry leader in electrical innovation and integration with the persistence, agility and commitment to always deliver.



### LOCATIONS

Bunbury and Perth



### EMPLOYEES

Over 100



### OWNERSHIP

100% Western Australian owned



Bunbury Office  
15 Wilson Road, DAVENPORT  
WA 6230

Perth Office  
239 Planet Street, WELSHPOOL  
WA 6106



(08) 9725 6120



[www.ofigroup.com.au](http://www.ofigroup.com.au)

**OFI IS A SPECIALIST ELECTRICAL CONTRACTOR WITH OVER 15 YEARS OF DFI (DEFENCE FUEL INFRASTRUCTURE) EXPERIENCE ACROSS AUSTRALIA.**



## DISCRIMINATORS

- Inhouse design team since 1989
- Specialist electrical contractor serving clients Australia-wide
- Ability to design, manufacture, site install, commission and maintain complex electrical systems
- Remote area and harsh environment specialists
- Experience across multiple high-profile sectors and clients
- Ability to fast-track design from initial concept to customised solutions
- Value-add engineering solutions
- One-stop shop electrical solutions provider

## CAPABILITIES

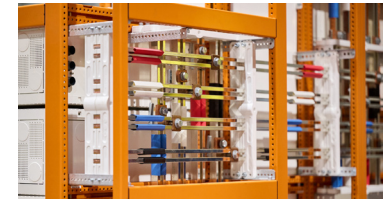
- Engineering and design
- Manufacturing of kiosks, RMUs, MCCs and switchrooms
- Hybrid power solutions including high and low voltage power systems
- Design and construct
- PLC, control and SCADA systems
- Hazardous areas
- Installation, maintenance and compliance upgrades
- Compliance reporting
- Instrumentation and automation
- Fuel systems specialists
- 10,000m2 purpose design manufacturing facility

## KEY CUSTOMERS AND PARTNERS



## QUALITY AND ACCREDITATION

- Federal Safety Commission Accreditation
- ISO 45001:2018 International Best Practice Standard for Occupational Health & Safety
- ISO 14001:2015 Environmental Management Systems
- 9001:2015 Quality Management
- EC 003787 WA



Part of NRW Holdings (ASX: NWH)

