

## **ENDORSEMENT PAGE**

This structure plan is prepared under the provisions of the City of Armadale Local Planning Scheme No. 4.

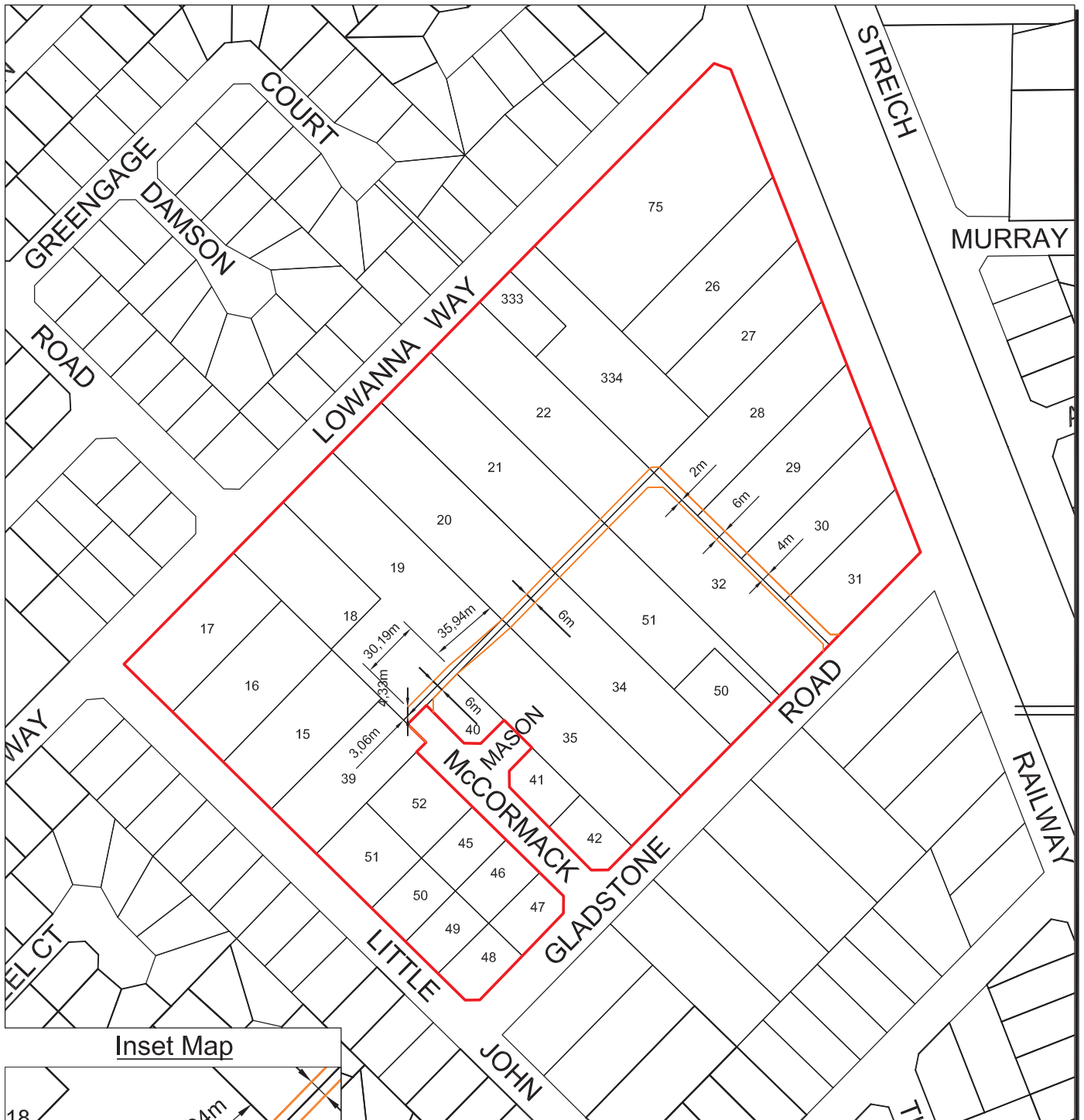
IT IS CERTIFIED THAT THIS STRUCTURE PLAN WAS APPROVED BY RESOLUTION OF THE WESTERN AUSTRALIAN PLANNING COMMISSION ON:

**26 JULY 2007**

In accordance with Schedule 2, Part 4, Clause 28 (2) and refer to Part 1, 2. (b) of the *Planning and Development (Local Planning Schemes) Regulations 2015*.

Date of Expiry:

**19 OCTOBER 2035**



**Inset Map**



### Provisions

- Proposed Lane Reservation to be ceded as a condition of development, subdivision or strata approval.
- A contribution towards construction of the new laneway will be required as a condition of development, subdivision or strata approval.
- In addition to the requirements of Policy PLN 3.1, Council may be prepared to consider using its discretion and approve developments up to the R40 density code where:
  - a) the safe and efficient movement of waste collection vehicles can be met.
  - b) the proposal can provide internal waste bin pick-up areas or has adequate frontage for waste collection, which do not restrict pedestrian or vehicle movement, especially on collection days; and
  - c) the applicant can demonstrate that the proposal will improve the streetscape and is prepared to contribute towards streetscape improvements and footpaths, where required.

Proposed 6m Laneway



SCALE  
1 : 2000