



Government of **Western Australia**
Department of **Communities**



Child Protection

Activity Performance Information 2024–2025

Accessibility statement

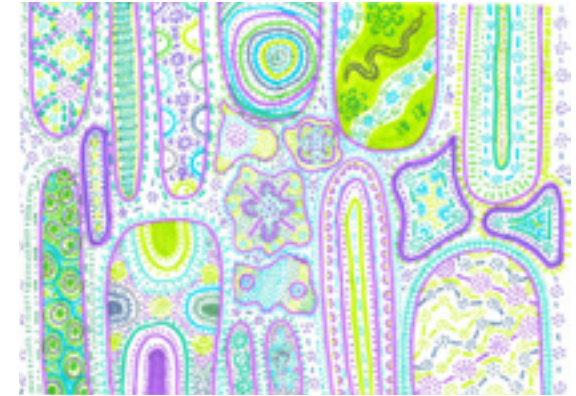
The Department of Communities strives to achieve online accessibility when delivering information to be inclusive of a wide range of people, including people with disability. This report has been designed as an accessible PDF. Some parts of the report may not achieve accessibility standards, for example the text size in some financial tables has been reduced to fit an A4 page. If you require an alternative format, please email:

enquiries@communities.wa.gov.au

Acknowledgement of Country and peoples

The Department of Communities proudly acknowledges Traditional Custodians throughout Western Australia and recognises their continuing connection to the land and waters, families and community.

We pay our respects to all members of the Aboriginal communities and their cultures; and to Elders past and present.



"This artwork was inspired by Jarrahdale – its rolling hills, deep valleys, and magical watering holes and streams. The town is quite small, making it feel like a tight-knit community that comes together to keep the forests and waterways clean and beautiful for years to come. I wanted to include both the established and new families in the town, as well as the bright green leaves that define Jarrahdale."



About the artist:

Memphis Jackson is a Noongar woman with close family connections to Wagyl Kaip, Yamatji and Whadjuk Boodja countries. She was born in Waikiki and grew up between Secret Harbour and Jarrahdale.

Contents

Accessibility statement	2	Age of children in care at 30 June 2025	20
Acknowledgement of Country and peoples	2	Age of children and young people in care at 30 June 2025, by district	21
The year at a glance	4	Children and young people by length of time in care, by district	22
Family Support Network clients	5	Children and young people by length of time in care	23
Intensive Family Support cases, Intensive Family Support Service referrals, Aboriginal In-home Support Service referrals and Best Beginnings Plus cases, by district	6	Number of foster carers approved	23
Effectiveness of Aboriginal In-home Support Service and Intensive Family Support Service referrals in 2023-24	7	Number of new Departmental foster carer households approved during 2024-25, by district	24
Children of concern in interactions	7	Children and young people in care at 30 June 2025 by living arrangement	25
Child Safety Investigations commenced	7	Age of children entering care during the year	26
Action taken as a result of Child Safety Investigations	8	Reasons why children left care*	26
Outcome of assessed concerns	9	Age of children and young people upon leaving care, by district	27
Outcomes of Child Safety Investigations, by district	10	Children and young people who left care, by length of time in care, by district	28
Protection applications lodged and orders granted, by district	17	Adoption orders granted by the Family Court or country of origin, by type of adoption	29
Mandatory reporting	18	Post-adoption information services	29
Crisis Care contacts	19		
Children and young people in care at 30 June 2025, by district	19		

The year at a glance

Children and young people needing protection are safe from abuse and harm



72,666
Contacts to the Department



17,568
Notifications



14,270
Child Safety Investigations



891
Protection orders granted



62,950
Family and domestic violence incidents with and without children



5,186
Mandatory reports

Children and young people in the Chief Executive Officer's care receive a high quality of care and have much improved life chances



5,276
Children in care



3,275
Foster carer households



4,117
Children in foster/family care

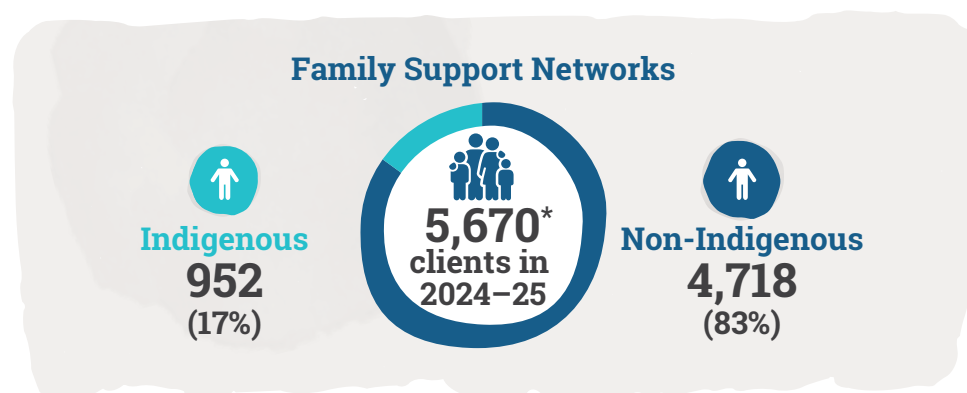


599
Children in residential care



1,773
Viewpoint surveys completed by children in care

Family Support Network clients



Family Support Network corridor	Number of cases			Number of clients			Indigenous clients		
	Assessment and coordination	Intensive case management	Total cases	Assessment and coordination	Intensive case management	Total clients	Assessment and Coordination	Intensive case management	Total clients
Armadale / Cannington	400	68	468	1267	240	1507	204	83	287
Fremantle / Rockingham	574	45	619	1604	173	1777	223	26	249
Mirrabooka / Joondalup	299	72	371	997	284	1281	144	57	201
Perth / Midland	335	56	391	1014	196	1210	172	62	234
Total	1608	241	1849	4882	893	5775	743	228	971

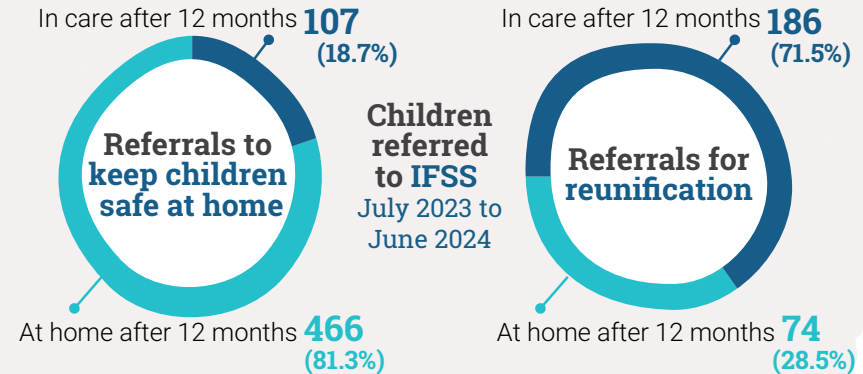
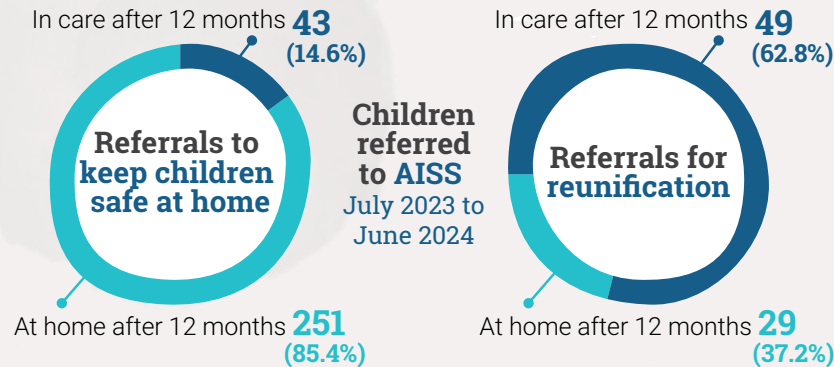
*The client count in this table is higher than the same in the above infographic. This discrepancy is due to clients being recorded in multiple corridors.

Intensive Family Support cases, Intensive Family Support Service referrals, Aboriginal In-home Support Service referrals and Best Beginnings Plus cases, by district

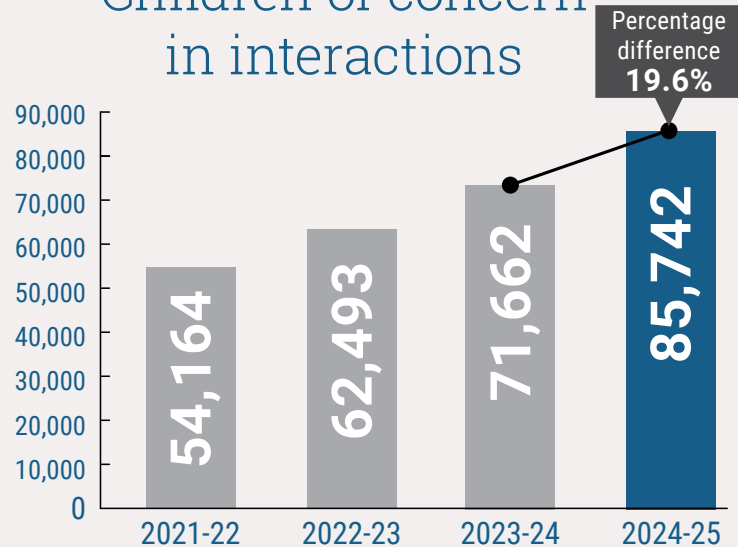
District	Intensive Family Support cases	Intensive Family Support Service referrals	Aboriginal In-home Support Service referrals*	Best Beginnings Plus cases
Armadale	150	80	32	45
Bindjareb	70	28	26	23
Cannington	183	64	43	38
East Kimberley	100	29	0	8
Fremantle	53	32	37	43
Goldfields	52	12	0	18
Great Southern	54	22	0	13
Joondalup	112	50	11	39
Midland	124	53	23	61
Midwest Gascoyne	74	29	0	29
Mirrabooka	124	31	24	44
Perth	83	39	17	26
Pilbara	119	75	0	33
Rockingham	68	34	12	39
Southwest	99	41	0	68
West Kimberley	144	21	0	25
Wheatbelt	48	10	0	25
Other	3	2	6	0
Total	1660	652	231	577

* The Aboriginal In-home Support Service is a metropolitan service only.

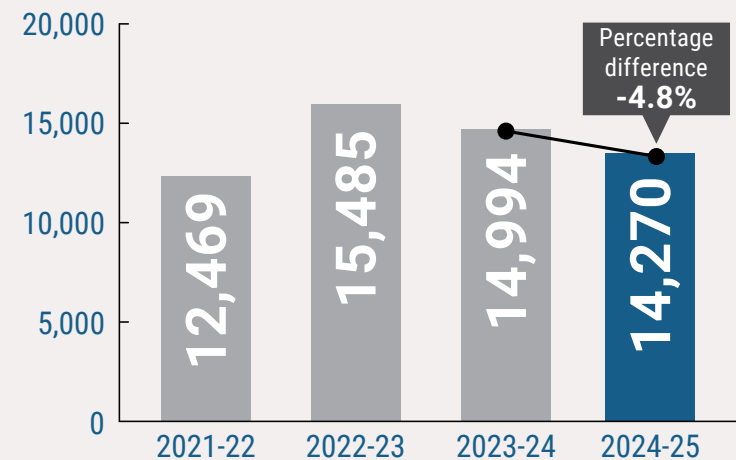
Effectiveness of Aboriginal In-home Support Service and Intensive Family Support Service referrals in 2023-24



Children of concern in interactions



Child Safety Investigations commenced



Action taken as a result of Child Safety Investigations

Outcome of Child Safety Investigations	Substantiated		Not substantiated		Unable to complete assessment		In process		Total
	Indigenous	Non-Indigenous	Indigenous	Non-Indigenous	Indigenous	Non-Indigenous	Indigenous	Non-Indigenous	
Intervention action	230	214	0	0	0	0	0	0	444
Commence Family Support (s.21)	32	23	22	26	0	0	0	0	103
Safety issues addressed – No further action	842	1202	1271	2143	0	0	0	0	5458
Action not possible	26	33	0	0	506	725	0	0	1290
In process	0	0	0	0	0	0	2150	3231	5381
Commence Intensive Family Support (s.32)	759	686	30	22	0	0	0	0	1497
Referral to external program	9	36	25	27	0	0	0	0	97
Total	1898	2194	1348	2218	506	725	2150	3231	14270



Outcome of assessed concerns

Outcome of assessed concerns	Neglect		Emotional abuse – FDV		Emotional abuse – other		Physical abuse		Sexual abuse		Wellbeing concerns		Total
	Indigenous	Non-Indigenous	Indigenous	Non-Indigenous	Indigenous	Non-Indigenous	Indigenous	Non-Indigenous	Indigenous	Non-Indigenous	Indigenous	Non-Indigenous	
Substantiated	73	76	97	111	17	43	63	89	25	50	5	1	650
Substantiated likelihood harm	891	757	1433	1315	158	264	190	318	92	161	14	22	5615
Not substantiated	808	983	753	895	127	356	347	812	230	579	8	26	5924
Suitable adult	2	6	1	0	1	0	0	0	0	0	2	6	18
No suitable adult	3	1	0	0	0	0	0	0	0	0	4	15	23
In process	677	876	978	1497	159	311	282	674	196	378	3	11	6042
Unable to complete*	264	291	335	421	55	117	112	153	72	127	6	13	1966
Total	2718	2990	3597	4239	517	1091	994	2046	615	1295	42	94	20238

A Child Safety Investigation may identify more than one concern and the Department assesses each of these concerns individually.

*Refers to circumstances such as a young person's refusal to engage with the Department's worker, or when a subject child or family has relocated during an investigation and their whereabouts are unknown.

Outcomes of Child Safety Investigations, by district

District	Intervention action		Intensive Family Support		Family Support		Referral to external program		Safety issues addressed		Action not possible		In process		Total
	Indigenous	Non-Indigenous	Indigenous	Non-Indigenous	Indigenous	Non-Indigenous	Indigenous	Non-Indigenous	Indigenous	Non-Indigenous	Indigenous	Non-Indigenous	Indigenous	Non-Indigenous	
Armadale															
Substantiated	32	21	54	78	0	0	0	13	82	154	0	1	0	0	435
Not substantiated	0	0	3	2	0	0	5	5	69	201	0	0	0	0	285
Unable to complete	0	0	0	0	0	0	0	0	0	0	15	45	0	0	60
In process	0	0	0	0	0	0	0	0	0	0	0	0	99	339	438
Total	32	21	57	80	0	0	5	18	151	355	15	46	99	339	1218
Bindjareb															
Substantiated	21	46	13	44	0	0	0	1	23	79	2	5	0	0	234
Not substantiated	0	0	0	3	0	0	0	0	44	219	0	0	0	0	266
Unable to complete	0	0	0	0	0	0	0	0	0	0	5	44	0	0	49
In process	0	0	0	0	0	0	0	0	0	0	0	0	52	203	255
Total	21	46	13	47	0	0	0	1	67	298	7	49	52	203	804

Outcomes of Child Safety Investigations, by district

District	Intervention action		Intensive Family Support		Family Support		Referral to external program		Safety issues addressed		Action not possible		In process		Total
	Indigenous	Non-Indigenous	Indigenous	Non-Indigenous	Indigenous	Non-Indigenous	Indigenous	Non-Indigenous	Indigenous	Non-Indigenous	Indigenous	Non-Indigenous	Indigenous	Non-Indigenous	
Cannington															
Substantiated	16	12	85	80	3	2	9	8	35	146	2	0	0	0	398
Not substantiated	0	0	0	1	0	6	0	3	56	146	0	0	0	0	212
Unable to complete	0	0	0	0	0	0	0	0	0	0	17	50	0	0	67
In process	0	0	0	0	0	0	0	0	0	0	0	0	120	223	343
Total	16	12	85	81	3	8	9	11	91	292	19	50	120	223	1020
East Kimberley															
Substantiated	3	0	47	0	0	0	0	0	67	5	3	0	0	0	125
Not substantiated	0	0	1	0	0	0	0	0	30	1	0	0	0	0	32
Unable to complete	0	0	0	0	0	0	0	0	0	0	13	2	0	0	15
In process	0	0	0	0	0	0	0	0	0	0	0	0	179	62	241
Total	3	0	48	0	0	0	0	0	97	6	16	2	179	62	413
Fremantle															
Substantiated	12	9	11	17	0	0	0	0	24	53	0	0	0	0	126
Not substantiated	0	0	0	0	8	0	8	10	101	176	0	0	0	0	303
Unable to complete	0	0	0	0	0	0	0	0	0	0	17	36	0	0	53
In process	0	0	0	0	0	0	0	0	0	0	0	0	64	126	190
Total	12	9	11	17	8	0	8	10	125	229	17	36	64	126	672

Outcomes of Child Safety Investigations, by district

District	Intervention action		Intensive Family Support		Family Support		Referral to external program		Safety issues addressed		Action not possible		In process		Total
	Indigenous	Non-Indigenous	Indigenous	Non-Indigenous	Indigenous	Non-Indigenous	Indigenous	Non-Indigenous	Indigenous	Non-Indigenous	Indigenous	Non-Indigenous	Indigenous	Non-Indigenous	
Goldfields															
Substantiated	19	1	22	15	6	7	0	0	61	43	0	0	0	0	174
Not substantiated	0	0	4	1	0	0	0	0	123	94	0	0	0	0	222
Unable to complete	0	0	0	0	0	0	0	0	0	0	67	31	0	0	98
In process	0	0	0	0	0	0	0	0	0	0	0	0	133	107	240
Total	19	1	26	16	6	7	0	0	184	137	67	31	133	107	734
Great Southern															
Substantiated	13	8	26	40	8	0	0	0	23	66	1	2	0	0	187
Not substantiated	0	0	1	0	6	0	0	0	41	93	0	0	0	0	141
Unable to complete	0	0	0	0	0	0	0	0	0	0	9	10	0	0	19
In process	0	0	0	0	0	0	0	0	0	0	0	0	40	74	114
Total	13	8	27	40	14	0	0	0	64	159	10	12	40	74	461
Joondalup															
Substantiated	16	13	52	90	2	1	0	3	46	127	0	4	0	0	354
Not substantiated	0	0	1	2	0	0	1	6	82	254	0	0	0	0	346
Unable to complete	0	0	0	0	0	0	0	0	0	0	9	32	0	0	41
In process	0	0	0	0	0	0	0	0	0	0	0	0	66	243	309
Total	16	13	53	92	2	1	1	9	128	381	9	36	66	243	1050

Outcomes of Child Safety Investigations, by district

District	Intervention action		Intensive Family Support		Family Support		Referral to external program		Safety issues addressed		Action not possible		In process		Total
	Indigenous	Non-Indigenous	Indigenous	Non-Indigenous	Indigenous	Non-Indigenous	Indigenous	Non-Indigenous	Indigenous	Non-Indigenous	Indigenous	Non-Indigenous	Indigenous	Non-Indigenous	
Midland															
Substantiated	12	21	49	49	1	4	0	5	28	88	2	1	0	0	260
Not substantiated	0	0	0	1	0	5	4	3	101	168	0	0	0	0	282
Unable to complete	0	0	0	0	0	0	0	0	0	0	43	95	0	0	138
In process	0	0	0	0	0	0	0	0	0	0	0	0	157	267	424
Total	12	21	49	50	1	9	4	8	129	256	45	96	157	267	1104
Midwest Gascoyne															
Substantiated	8	5	42	8	0	0	0	0	144	53	2	2	0	0	264
Not substantiated	0	0	0	0	0	0	0	0	156	60	0	0	0	0	216
Unable to complete	0	0	0	0	0	0	0	0	0	0	71	64	0	0	135
In process	0	0	0	0	0	0	0	0	0	0	0	0	280	156	436
Total	8	5	42	8	0	0	0	0	300	113	73	66	280	156	1051
Mirrabooka															
Substantiated	18	32	72	91	4	0	0	6	29	100	1	10	0	0	363
Not substantiated	0	0	4	1	0	0	0	0	30	100	0	0	0	0	135
Unable to complete	0	0	0	0	0	0	0	0	0	0	11	29	0	0	40
In process	0	0	0	0	0	0	0	0	0	0	0	0	50	163	213
Total	18	32	76	92	4	0	0	6	59	200	12	39	50	163	751

Outcomes of Child Safety Investigations, by district

District	Intervention action		Intensive Family Support		Family Support		Referral to external program		Safety issues addressed		Action not possible		In process		Total
	Indigenous	Non-Indigenous	Indigenous	Non-Indigenous	Indigenous	Non-Indigenous	Indigenous	Non-Indigenous	Indigenous	Non-Indigenous	Indigenous	Non-Indigenous	Indigenous	Non-Indigenous	
Perth															
Substantiated	7	10	15	15	4	0	0	0	5	24	5	1	0	0	86
Not substantiated	0	0	0	0	0	2	0	0	28	81	0	0	0	0	111
Unable to complete	0	0	0	0	0	0	0	0	0	0	4	28	0	0	32
In process	0	0	0	0	0	0	0	0	0	0	0	0	106	247	353
Total	7	10	15	15	4	2	0	0	33	105	9	29	106	247	582
Pilbara															
Substantiated	17	2	88	2	2	0	0	0	95	25	7	2	0	0	240
Not substantiated	0	0	14	1	2	0	1	0	164	55	0	0	0	0	237
Unable to complete	0	0	0	0	0	0	0	0	0	0	98	33	0	0	131
In process	0	0	0	0	0	0	0	0	0	0	0	0	176	81	257
Total	17	2	102	3	4	0	1	0	259	80	105	35	176	81	865
Rockingham															
Substantiated	4	8	24	73	0	1	0	0	14	58	0	2	0	0	184
Not substantiated	0	0	0	1	0	11	0	0	55	171	0	0	0	0	238
Unable to complete	0	0	0	0	0	0	0	0	0	0	31	150	0	0	181
In process	0	0	0	0	0	0	0	0	0	0	0	0	93	461	554
Total	4	8	24	74	0	12	0	0	69	229	31	152	93	461	1157

Outcomes of Child Safety Investigations, by district

District	Intervention action		Intensive Family Support		Family Support		Referral to external program		Safety issues addressed		Action not possible		In process		Total
	Indigenous	Non-Indigenous	Indigenous	Non-Indigenous	Indigenous	Non-Indigenous	Indigenous	Non-Indigenous	Indigenous	Non-Indigenous	Indigenous	Non-Indigenous	Indigenous	Non-Indigenous	
South West															
Substantiated	11	21	33	65	1	8	0	0	41	129	1	3	0	0	313
Not substantiated	0	0	1	7	6	2	2	0	69	223	0	0	0	0	310
Unable to complete	0	0	0	0	0	0	0	0	0	0	47	32	0	0	79
In process	0	0	0	0	0	0	0	0	0	0	0	0	75	227	302
Total	11	21	34	72	7	10	2	0	110	352	48	35	75	227	1004
West Kimberley															
Substantiated	17	0	86	2	1	0	0	0	97	1	0	0	0	0	204
Not substantiated	0	0	0	1	0	0	0	0	52	9	0	0	0	0	62
Unable to complete	0	0	0	0	0	0	0	0	0	0	33	14	0	0	47
In process	0	0	0	0	0	0	0	0	0	0	0	0	350	105	455
Total	17	0	86	3	1	0	0	0	149	10	33	14	350	105	768
Wheatbelt															
Substantiated	4	5	40	17	0	0	0	0	28	48	0	0	0	0	142
Not substantiated	0	0	1	1	0	0	4	0	66	91	0	0	0	0	163
Unable to complete	0	0	0	0	0	0	0	0	0	0	16	30	0	0	46
In process	0	0	0	0	0	0	0	0	0	0	0	0	110	147	257
Total	4	5	41	18	0	0	4	0	94	139	16	30	110	147	608

Outcomes of Child Safety Investigations, by district

District	Intervention action		Intensive Family Support		Family Support		Referral to external program		Safety issues addressed		Action not possible		In process		Total
	Indigenous	Non-Indigenous	Indigenous	Non-Indigenous	Indigenous	Non-Indigenous	Indigenous	Non-Indigenous	Indigenous	Non-Indigenous	Indigenous	Non-Indigenous	Indigenous	Non-Indigenous	
Other work units															
Substantiated	0	0	0	0	0	0	0	0	0	3	0	0	0	0	3
Not substantiated	0	0	0	0	0	0	0	0	4	1	0	0	0	0	5
Unable to complete	0	0	0	0	0	0	0	0	0	0	0	0	0	0	0
In process	0	0	0	0	0	0	0	0	0	0	0	0	0	0	0
Total	0	0	0	0	0	0	0	0	4	4	0	0	0	0	8
Grand total	230	214	789	708	54	49	34	63	2113	3345	532	758	2150	3231	14270

Protection applications lodged and orders granted, by district

Protection applications lodged in 2024–25, by district

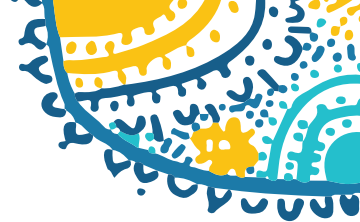
District	Applications for Indigenous children	Applications for non-Indigenous children
Armadale	73	67
Bindjareb	55	78
Cannington	50	31
East Kimberley	29	0
Fremantle	37	35
Goldfields	35	4
Great Southern	18	20
Joondalup	21	44
Midland	63	52
Midwest Gascoyne	39	13
Mirrabooka	52	66
Perth	34	29
Pilbara	52	2
Rockingham	11	32
Southwest	53	61
West Kimberley	57	1
Wheatbelt	22	17
Other Work Units	1	2
Total	702	554

Protection orders granted, by district*

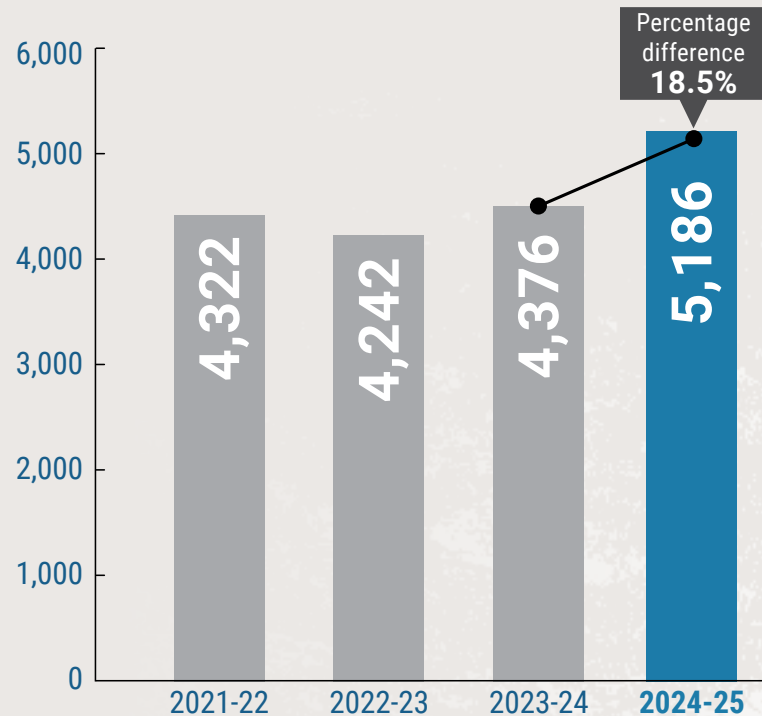
District	Orders for Indigenous children	Orders for non-Indigenous children
Armadale	42	65
Bindjareb	19	28
Cannington	33	23
East Kimberley	46	0
Fremantle	30	12
Goldfields	30	3
Great Southern	16	13
Joondalup	19	53
Midland	41	38
Midwest Gascoyne	46	11
Mirrabooka	36	14
Perth	17	23
Pilbara	37	3
Rockingham	10	23
Southwest	35	60
West Kimberley	41	2
Wheatbelt	15	7
Other Work Units	0	0
Total	513	378

*Orders granted in the financial year may relate to applications made in previous years.

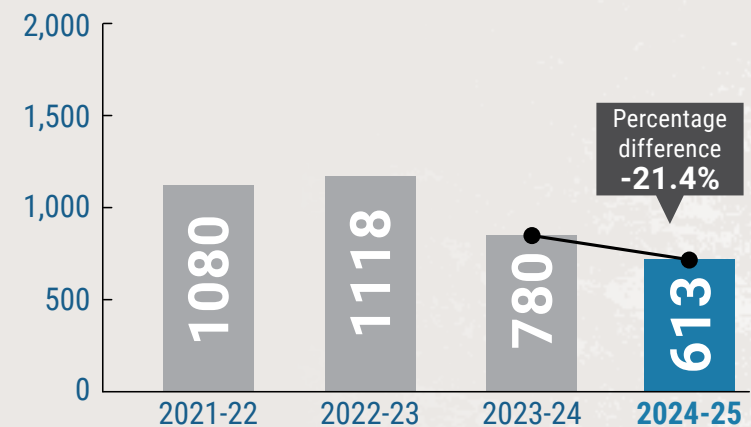
Mandatory reporting



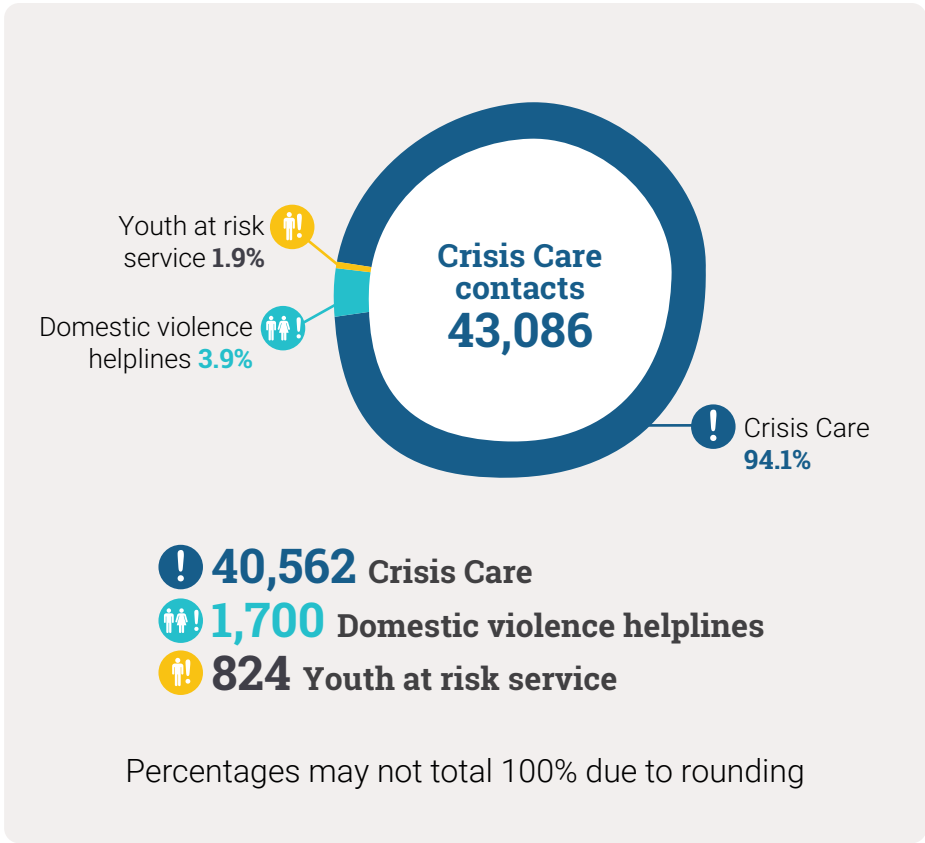
Mandatory reports



New Child Safety Investigations from mandatory reports



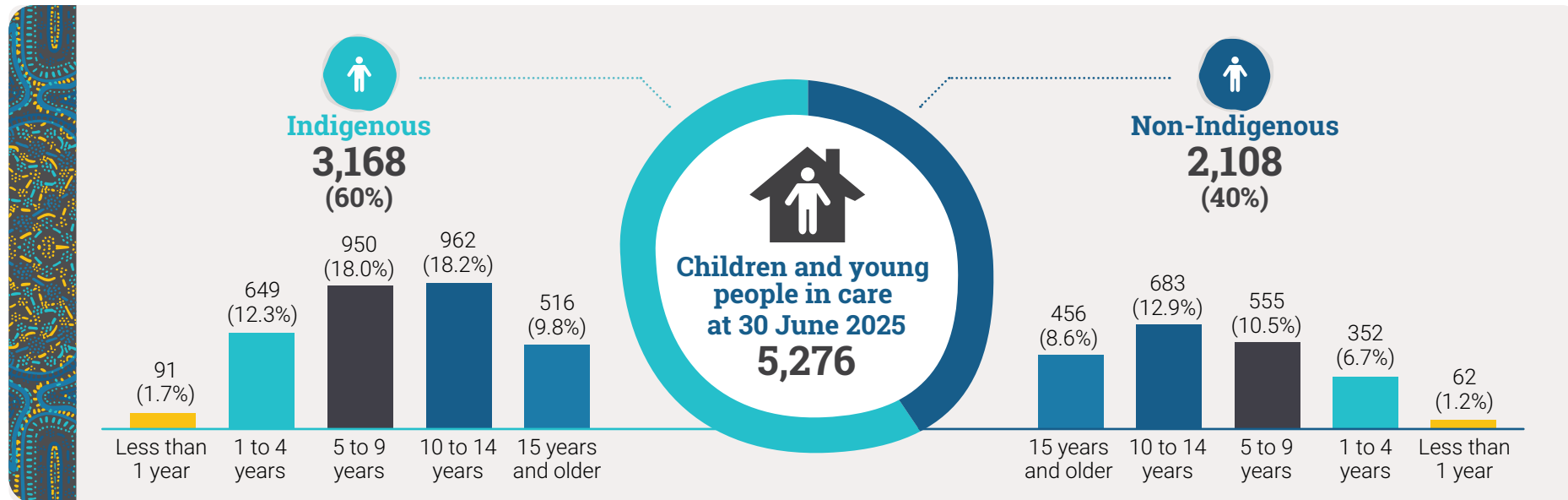
Crisis Care contacts



Children and young people in care at 30 June 2025, by district

District	Indigenous	Non-Indigenous	Total
Armadale	337	270	607
Bindjareb	159	191	350
Cannington	250	178	428
East Kimberley	153	0	153
Fremantle	146	122	268
Goldfields	129	23	152
Great Southern	91	62	153
Joondalup	156	206	362
Midland	354	194	548
Midwest Gascoyne	197	41	238
Mirrabooka	210	200	410
Perth	131	154	285
Pilbara	188	3	191
Rockingham	107	167	274
Southwest	186	221	407
West Kimberley	220	3	223
Wheatbelt	152	59	211
Fostering/Adoption Unit	2	14	16
Total	3,168	2,108	5,276

Age of children in care at 30 June 2025



Percentages may not total 100% due to rounding

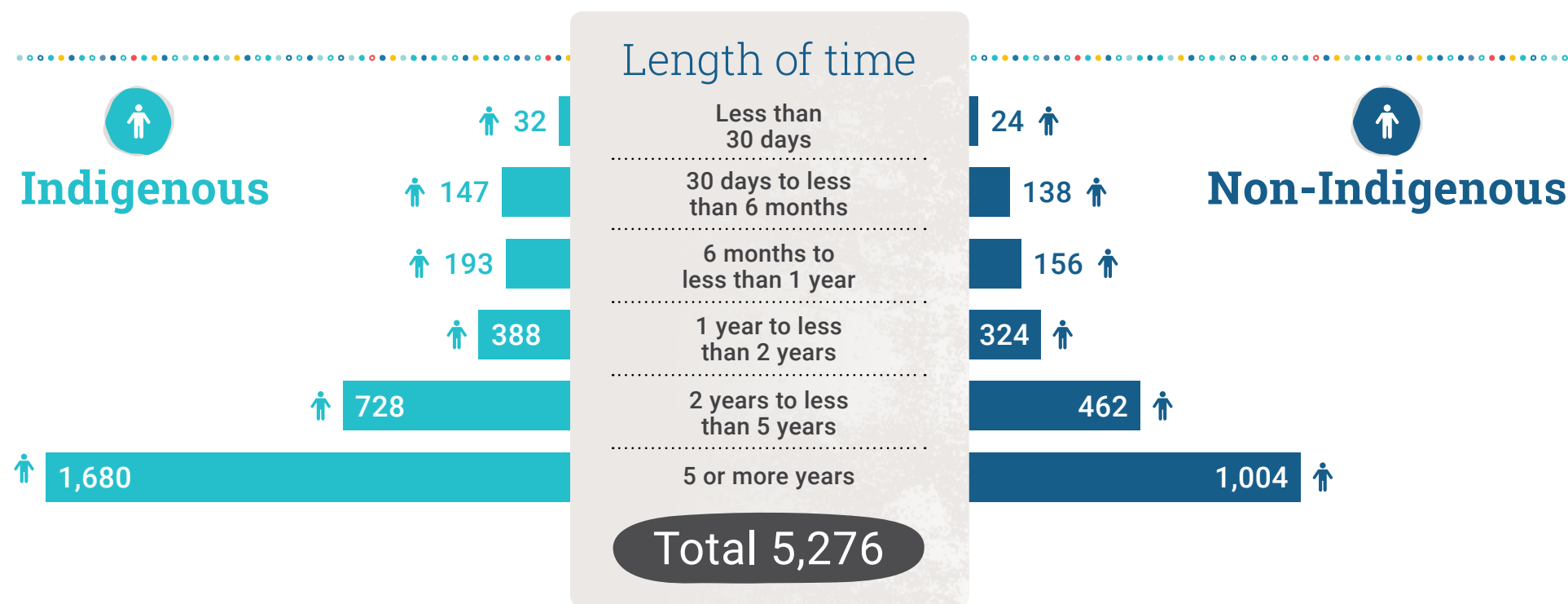
Age of children and young people in care at 30 June 2025, by district

District	Less than 1 year		1 to 4 years		5 to 9 years		10 to 14 years		15 years and older		Total
	Indigenous	Non-Indigenous	Indigenous	Non-Indigenous	Indigenous	Non-Indigenous	Indigenous	Non-Indigenous	Indigenous	Non-Indigenous	
Armadale	12	4	80	60	88	82	100	81	57	43	607
Bindjareb	2	4	40	33	57	71	36	51	24	32	350
Cannington	4	1	53	26	61	37	92	64	40	50	428
East Kimberley	1	0	34	0	41	0	43	0	34	0	153
Fremantle	9	4	35	23	42	30	36	40	24	25	268
Goldfields	5	0	37	4	40	10	26	4	21	5	152
Great Southern	5	1	25	13	20	16	26	23	15	9	153
Joondalup	3	6	26	39	46	45	47	76	34	40	362
Midland	10	9	66	25	123	53	103	61	52	46	548
Midwest Gascoyne	4	1	39	7	59	13	57	12	38	8	238
Mirrabooka	11	4	43	27	61	64	64	64	31	41	410
Perth	4	6	30	20	40	34	35	56	22	38	285
Pilbara	2	1	30	1	68	0	68	1	20	0	191
Rockingham	1	6	12	24	38	33	41	59	15	45	274
Southwest	3	7	29	38	49	58	67	63	38	55	407
West Kimberley	11	0	46	1	74	1	66	1	23	0	223
Wheatbelt	3	1	23	5	43	7	55	27	28	19	211
Professional Practice Unit	1	7	1	6	0	1	0	0	0	0	16
Total	91	62	649	352	950	555	962	683	516	456	5276

Children and young people by length of time in care, by district

District	Less than 30 days		30 days to less than 6 months		6 months to less than 1 year		1 year to less than 2 years		2 years to less than 5 years		5 years or more		Total
	Indigenous	Non-Indigenous	Indigenous	Non-Indigenous	Indigenous	Non-Indigenous	Indigenous	Non-Indigenous	Indigenous	Non-Indigenous	Indigenous	Non-Indigenous	
Armadale	6	3	17	10	26	20	40	44	78	74	170	119	607
Bindjareb	12	8	19	23	4	27	33	15	29	28	62	90	350
Cannington	1	0	5	2	17	10	20	25	66	33	141	108	428
East Kimberley	0	0	4	0	7	0	24	0	40	0	78	0	153
Fremantle	3	1	13	11	7	7	19	7	31	29	73	67	268
Goldfields	0	0	10	4	6	1	21	8	31	6	61	4	152
Great Southern	1	0	4	3	9	9	17	7	14	21	46	22	153
Joondalup	0	2	4	10	11	13	15	53	31	35	95	93	362
Midland	1	3	16	9	26	18	43	22	76	40	192	102	548
Midwest Gascoyne	1	0	8	6	4	1	26	8	39	12	119	14	238
Mirrabooka	3	0	9	19	9	20	34	35	66	52	89	74	410
Perth	0	0	8	8	9	8	12	38	32	27	70	73	285
Pilbara	0	0	5	2	20	0	16	0	36	0	111	1	191
Rockingham	0	0	1	8	3	7	6	12	29	47	68	93	274
Southwest	0	3	9	14	11	7	17	44	48	43	101	110	407
West Kimberley	0	0	6	0	20	0	21	2	52	1	121	0	223
Wheatbelt	3	3	9	3	4	2	23	4	30	13	83	34	211
Professional Practice Unit	1	1	0	6	0	6	1	0	0	1	0	0	16
Total	32	24	147	138	193	156	388	324	728	462	1680	1004	5276

Children and young people by length of time in care



Number of foster carers approved

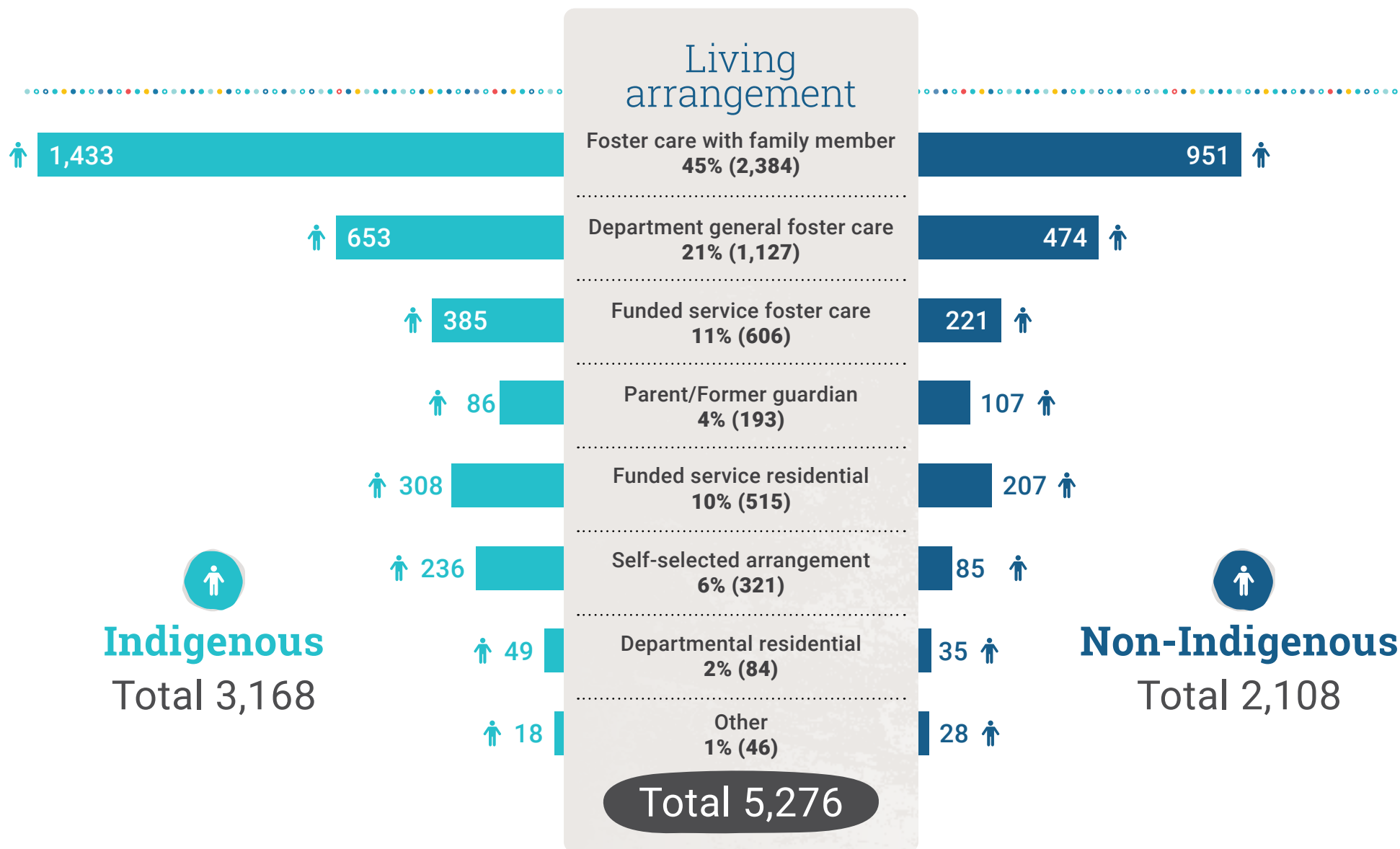
At 30 June 2025	Indigenous	Non-Indigenous	Total
Approved Departmental Foster Carers	42	803	845
Approved Community Organisation Foster Carers	67	491	558
Approved Departmental Family Carers	707	1165	1872
Total	816	2459	3275

Number of new Departmental foster carer households approved during 2024-25, by district

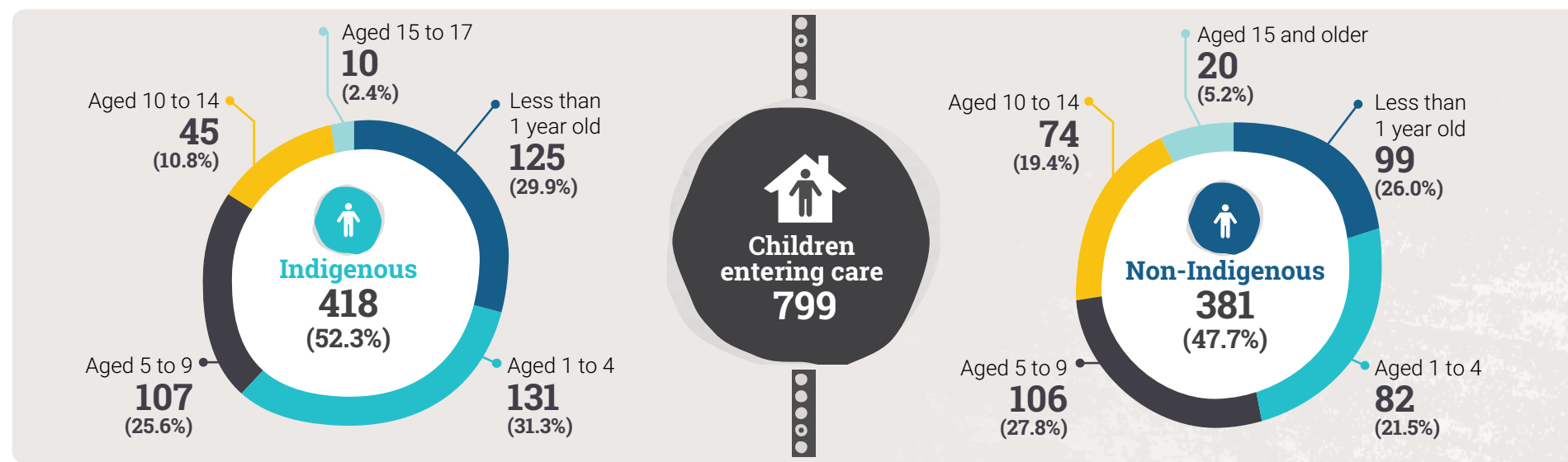
District	Total
Armadale	6
Bindjareb	4
Cannington	6
East Kimberley	0
Fremantle	1
Goldfields	0
Great Southern	5
Joondalup	3
Midland	3
Midwest Gascoyne	3
Mirrabooka	2
Perth	5
Pilbara	1
Rockingham	4
Southwest	3
West Kimberley	3
Wheatbelt	1
Child and carer connection hub	0
Total	50



Children and young people in care at 30 June 2025 by living arrangement

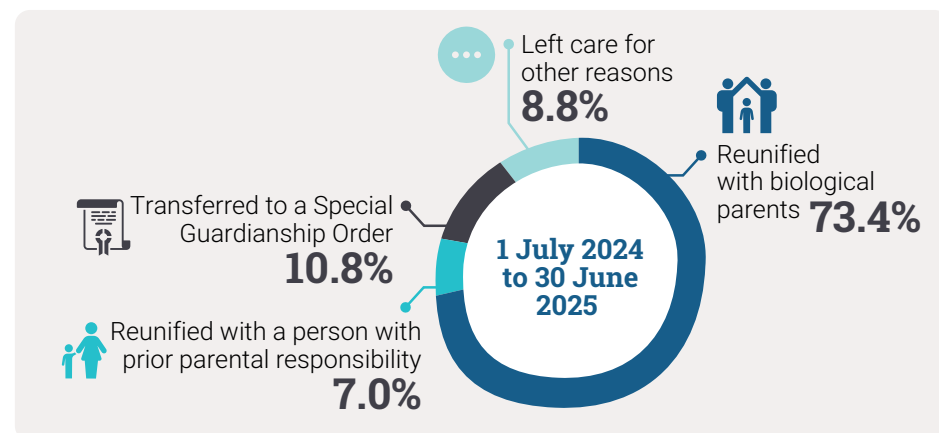


Age of children entering care during the year



Percentages may not total 100% due to rounding

Reasons why children left care*



*Does not include children who left care on turning 18 years of age.

Age of children and young people upon leaving care, by district

District	Less than 1 year		1 to 4 years		5 to 9 years		10 to 14 years		15 to 17 years		18 years or older		Total
	Indigenous	Non-Indigenous	Indigenous	Non-Indigenous	Indigenous	Non-Indigenous	Indigenous	Non-Indigenous	Indigenous	Non-Indigenous	Indigenous	Non-Indigenous	
Armadale	0	1	5	5	4	8	3	1	2	0	24	14	67
Bindjareb	1	1	4	8	8	8	6	7	1	3	11	16	74
Cannington	0	1	2	4	2	8	0	1	0	0	12	15	45
East Kimberley	0	0	2	0	3	2	1	2	1	0	10	0	21
Fremantle	1	1	7	3	5	3	2	6	0	2	10	9	49
Goldfields	1	0	9	2	6	0	4	1	3	1	8	1	36
Great Southern	0	0	0	0	0	0	0	0	0	3	2	5	10
Joondalup	1	2	4	3	2	6	2	9	3	6	11	16	65
Midland	0	2	6	3	9	4	12	4	1	4	16	21	82
Midwest Gascoyne	1	2	4	1	9	1	6	4	3	2	12	2	47
Mirrabooka	1	0	4	0	4	1	9	0	3	0	8	10	40
Perth	2	0	2	1	2	1	1	2	0	1	6	9	27
Pilbara	2	0	7	0	7	0	9	0	3	0	10	0	38
Rockingham	0	2	1	7	3	5	0	9	2	4	5	16	54
South West	1	2	6	9	5	13	5	5	0	4	11	23	84
West Kimberley	0	0	1	0	0	1	1	0	0	0	16	0	19
Wheatbelt	1	0	0	1	3	4	0	8	0	1	10	3	31
Statewide Referral & Response	1	0	0	0	0	0	0	0	0	0	0	0	1
Fostering/ Adoption	1	3	0	3	0	2	0	1	0	0	0	0	10
Total	14	17	64	50	72	67	61	60	22	31	182	160	800

Children and young people who left care, by length of time in care, by district

District	Less than 30 days		30 days to less than 6 months		6 months to less than 1 year		1 year to less than 2 years		2 years to less than 5 years		5 years or more		Total
	Indigenous	Non-Indigenous	Indigenous	Non-Indigenous	Indigenous	Non-Indigenous	Indigenous	Non-Indigenous	Indigenous	Non-Indigenous	Indigenous	Non-Indigenous	
Armadale	3	4	1	0	5	2	3	6	5	5	21	12	67
Bindjareb	0	4	3	8	7	4	4	1	5	11	12	15	74
Cannington	0	3	1	3	1	4	2	4	3	4	9	11	45
East Kimberley	6	4	0	0	0	0	2	0	1	0	8	0	21
Fremantle	0	3	2	0	0	2	9	4	4	8	10	7	49
Goldfields	7	1	0	0	0	0	7	0	5	3	12	1	36
Great Southern	0	0	0	1	0	0	0	0	0	1	2	6	10
Joondalup	0	4	0	5	1	4	0	5	13	9	9	15	65
Midland	7	2	0	0	1	2	8	2	13	12	15	20	82
Midwest Gascoyne	1	0	0	2	1	2	7	2	2	1	24	5	47
Mirrabooka	0	0	1	1	4	1	6	0	4	0	14	9	40
Perth	1	0	1	1	1	0	0	2	1	2	9	9	27
Pilbara	7	0	3	0	1	0	6	0	7	0	14	0	38
Rockingham	0	5	0	0	0	4	1	5	2	13	8	16	54
South West	1	0	2	11	0	1	4	5	9	17	12	22	84
West Kimberley	1	1	0	0	0	0	1	0	0	0	16	0	19
Wheatbelt	0	0	2	2	0	3	1	3	4	5	7	4	31
Statewide Referral & Response	1	0	0	0	0	0	0	0	0	0	0	0	1
Fostering/ Adoption	1	2	0	1	0	3	0	0	0	0	0	3	10
Total	36	33	16	35	22	32	61	39	78	91	202	155	800

Where children have experienced more than one period of care in 2024–25, the length of time of the most recent period of care is used.

Adoption orders granted by the Family Court or country of origin, by type of adoption

Type of adoption	2021-22	2022-23	2023-24	2024-25
Adult	15	16	12	16
Step-parent	5	2	3	2
Relative	1	0	0	0
Local	2	5	5	5
Inter-country	3	1	3	1
Total	26	24	23	24

Post-adoption information services

This data shows the number of post-adoption information services provided during the financial year.

Services	2021-22	2022-23	2023-24	2024-25
Registrations where services were provided*	626	639	813	829
Provision of sensitive information	67	62	163	215
Duty enquiry by registered client	169	213	200	206
Facilitated contact between adoption parties	38	50	67	107
Outreach services	54	72	93	117
Death notifications†	117	85	174	172

*Includes registrations made in previous years as services can be provided over time.

† The Department is legislated to advise parties to an adoption about the death of other parties to the adoption.

Department of Communities

Postal address: Locked Bag 5000, Fremantle WA 6959

Telephone: 1800 176 888

Email: enquiries@communities.wa.gov.au

Website: www.communities.wa.gov.au

Translating and Interpreting Service (TIS) – Telephone: 13 14 50

If you are deaf, or have a hearing or speech impairment, contact us through the National Relay Service. For more information visit:

www.accesshub.gov.au/about-the-nrs