

ENDORSEMENT

This structure plan is prepared under the provisions of the Shire of Capel
Local Planning Scheme No. 8.

IT IS CERTIFIED THAT THIS STRUCTURE PLAN WAS APPROVED BY RESOLUTION OF THE
WESTERN AUSTRALIAN PLANNING COMMISSION ON:

16 DECEMBER 2011

In accordance with Schedule 2, Part 4, Clause 28 (2) and refer to Part 1, 2. (b) of the *Planning and Development (Local Planning Schemes) Regulations 2015*.

Date of Expiry:

19 OCTOBER 2027

DISCLAIMER: DATA OBTAINED FROM
ERM, COFFEY ENVIRONMENTAL, FIRE PLAN WA
AND BENNETT ENVIRONMENTAL CONSULTANTS

This Subdivision Guide Plan has been
adopted by Council as part of Amendment
No. 40 to Shire of Capel Town Planning
Scheme NO. 7 (Minute OC1015).

R.R.

ACTING CHIEF EXECUTIVE OFFICER

24/10/11.
DATE

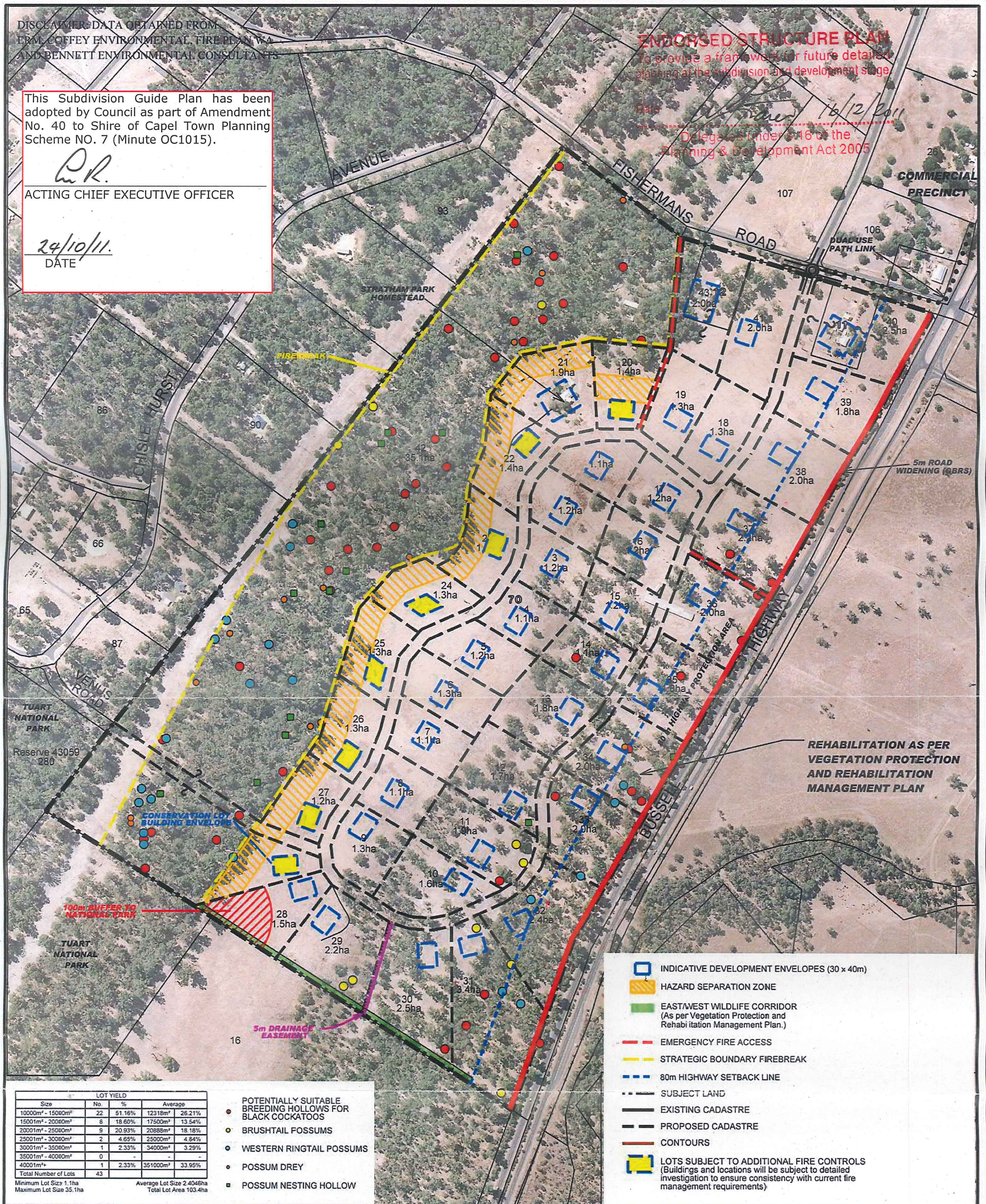
ENDORSED STRUCTURE PLAN

To provide a framework for future detailed
planning at the subdivision and development stage

Date:

16/12/2011

Delegated under s.16 of the
Planning & Development Act 2005



SUBDIVISION GUIDE PLAN LOTS 11, 12 & 70 FISHERMANS ROAD, STRATHAM



75m 0 150 300m
1:3000 @ A1 or 1:6000 @ A3
ALL DISTANCES ARE IN METRES

REVISION	DESCRIPTION	DRAFTER	DATE
J			
I			
H			
G			
F			
E			
D			
C			
B			
A			

COPYRIGHT
THIS DOCUMENT IS AND SHALL REMAIN THE PROPERTY OF
THOMPSON MCROBERT EDGEOLE PTY LTD. THE DOCUMENT
MAY ONLY BE USED FOR THE PURPOSE FOR WHICH IT WAS
COMMISSIONED AND IN ACCORDANCE WITH THE TERMS OF
ENGAGEMENT FOR THE COMMISSION. UNAUTHORISED USE
OF THIS DOCUMENT IN ANY FORM WHATSOEVER IS
PROHIBITED.

ORIGINAL PLANNER:	B.W.
ORIGINAL DRAFTER:	K.S.
CREATED DATE:	30.11.2009
AERIAL DATA:	ECW
CADASTRAL DATA:	MGA
TOPOGRAPHIC DATA:	



06439P-SU-01A

Thompson McRobert Edgole (08) 9791 4411 www.tme.net.au

FIGURE 4