

ENDORSEMENT

This structure plan is prepared under the provisions of the Shire of Denmark
Local Planning Scheme No. 3.

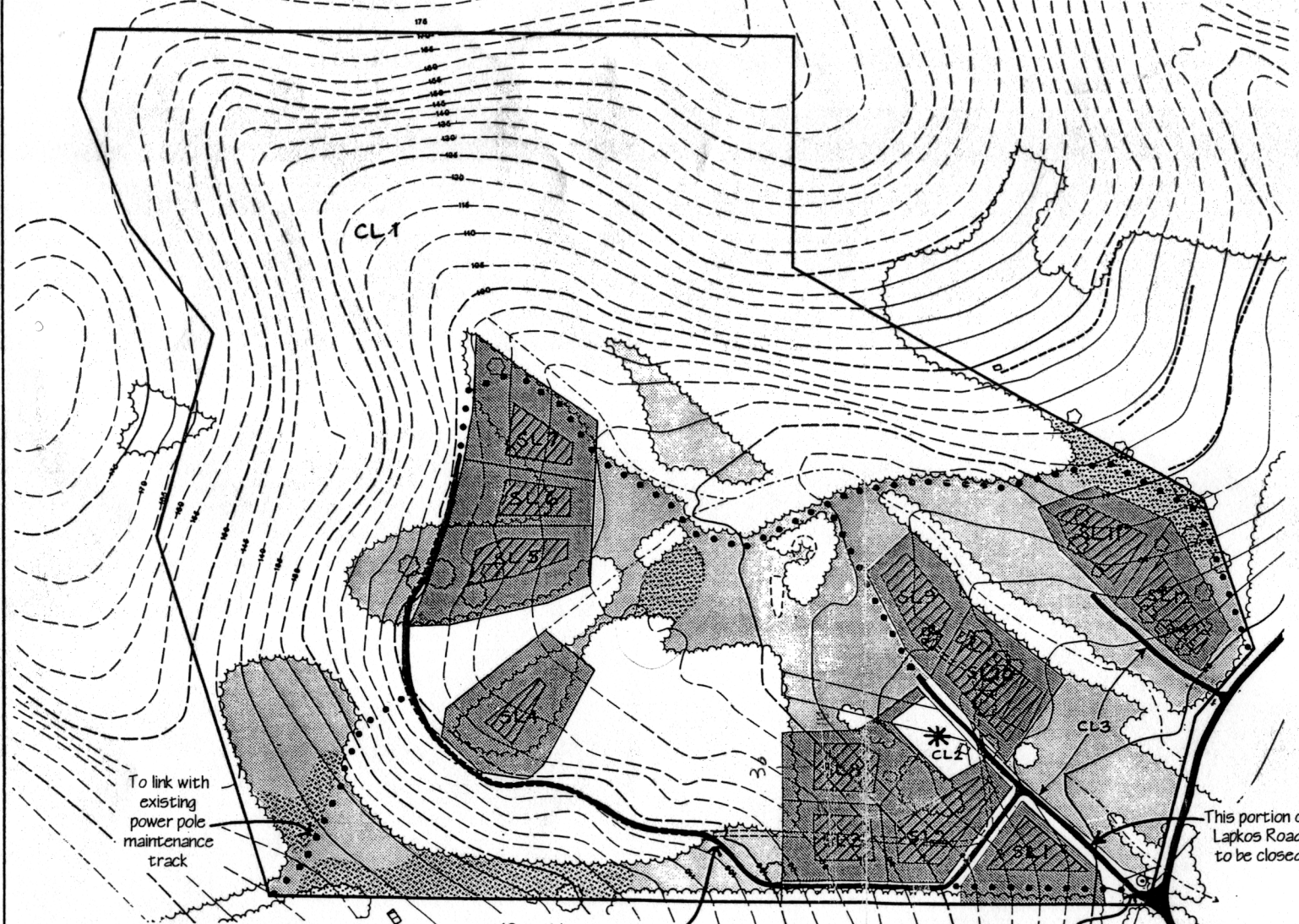
IT IS CERTIFIED THAT THIS STRUCTURE PLAN WAS APPROVED BY RESOLUTION OF THE
WESTERN AUSTRALIAN PLANNING COMMISSION ON:

23 OCTOBER 1998

In accordance with Schedule 2, Part 4, Clause 28 (2) and refer to Part 1, 2. (b) of the *Planning and
Development (Local Planning Schemes) Regulations 2015*.

Date of Expiry:

19 OCTOBER 2028



LEGEND

- Strata Lot & Low Fuel Areas
- Development Areas
- Access Ways
- Emergency Access / Strategic Fire Break
- Strata Facilities
- Existing Vegetation
- Existing Drainage Line
- 3 Tier Revegetation
- Stand Pipe
- Supplementary Low Fuel Areas

MINISTRY FOR PLANNING
ALBANY OFFICE

16 OCT 1998
FILE 1100-98

- LOT BREAKDOWN**
- SL 1 - SL 12 Strata Retreat Lots = 12
 - CL 1 Communal Lot 1 = Remnant Vegetation and Pasture
 - CL 2 Communal Lot 2 = Strata Facilities Site & Low Fuel Area
 - CL 3 Communal Lot 3 = Strata Access Ways

SCALE 1:4 000

Adopted by Resolution of the Council of the Shire of Denmark at the meeting of the Council, held on the day of 199.....

Chief Executive Officer

AYTON, TAYLOR & BURRELL
Consultants in Town Planning and Civic Design
11 Duke Street, Albany. W. A. 6330
Phone 08 9842 2304 Fax 08 9842 1340

SUBDIVISION GUIDE PLAN LANDSCAPE PROTECTION ZONE Lot 1 Lapko Road, Denmark