

ENDORSEMENT

This structure plan is prepared under the provisions of the Shire of Denmark
Local Planning Scheme No. 3.

IT IS CERTIFIED THAT THIS STRUCTURE PLAN WAS APPROVED BY RESOLUTION OF THE
WESTERN AUSTRALIAN PLANNING COMMISSION ON:

23 OCTOBER 1998

In accordance with Schedule 2, Part 4, Clause 28 (2) and refer to Part 1, 2. (b) of the *Planning and
Development (Local Planning Schemes) Regulations 2015*.

Date of Expiry:

19 OCTOBER 2028

ALL AREAS AND
DIMENSIONS
SUBJECT TO SURVEY

Adopted by Resolution of the Council
of the Shire of Denmark at the 12th day
meeting of the Council, held on the
21st day of April 1997.

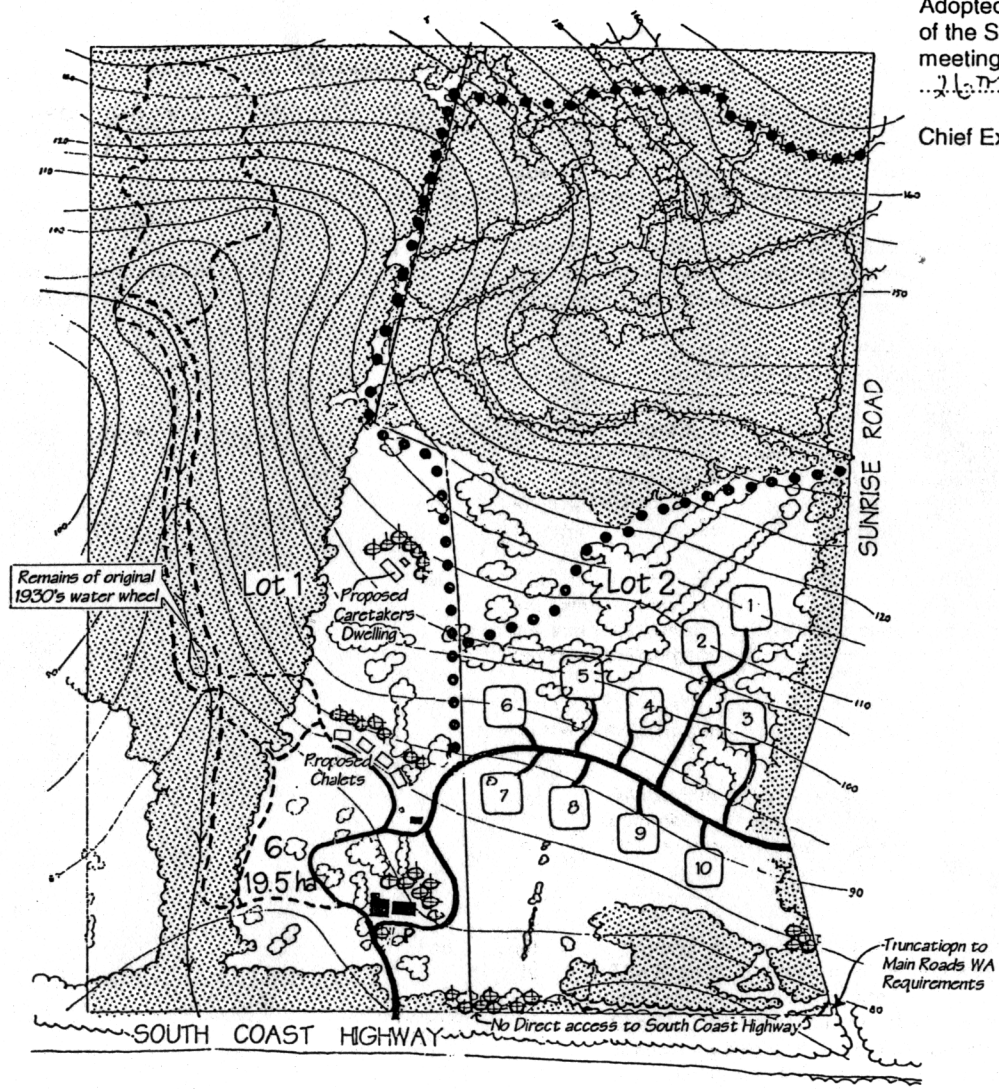
Chief Executive Officer *Kitch*

LEGEND

- Workshop, Gallery & Parking
- Existing Tree Cover (to be retained)
- Creekline
- Vegetation Protection Area
- Indicative Strategic Fire Break
- Revegetation/Landscaping
- Development Areas (Strata Retreat Lots)
- Access ways (Subject to definition at subdivision/development stage)
- Indicative Walkways (Subject to definition at development stage)

Scale ~~1:4000~~ **NTS**

Lot 1 TOURIST ZONE
Lot 2 LANDSCAPE PROTECTION ZONE



SUBDIVISION GUIDE PLAN

Loc 550 South Coast Hwy
Denmark.