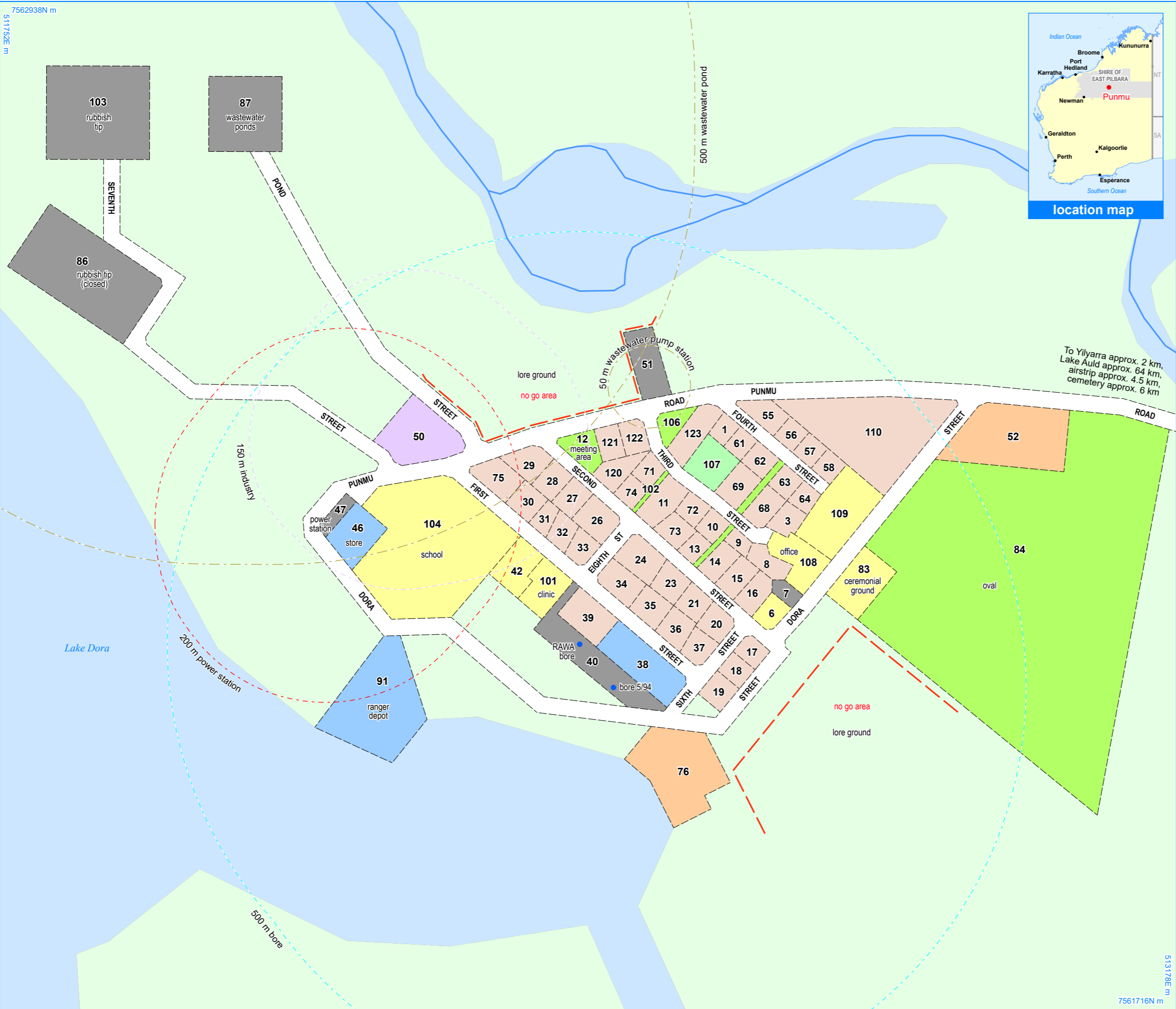
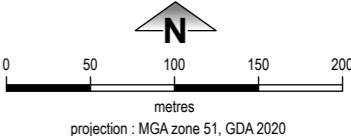


7562938N m
511752E m



Punmu Layout Plan 2 - Living Area Amendment 5

- Features**
- production bore
- Land Administration**
- cadastre
 - settlement layout (SL) lot & SL-lot number
- Exclusion Boundary** (see [Aboriginal Settlements Guideline](#))
- drinking water source wellhead protection zone
 - industry
 - no-go area
 - power station
 - wastewater
- Land Use**
- | | |
|---------------------------------------|--|
| road reserve | road, essential service distribution network |
| residential | house, residential quarters |
| visitor camping | camping ground, traditional law and culture |
| community | child care premises, civic use, corrective institution, educational establishment, health care centre, worship building |
| open space | agriculture - extensive, essential service distribution network, traditional law and culture |
| rural | rural pursuit, agriculture - extensive, animal husbandry - intensive, agriculture - intensive, essential service distribution network |
| recreation | recreation, essential service distribution network |
| pedestrian access way | essential service distribution network, pedestrian access way |
| drinking water source protection area | any use permitted under the Drinking Water Source Protection Plan |
| waterway | agriculture - extensive, agriculture - intensive, traditional law and culture |
| commercial | art centre, caravan park, motel, office, service station, shop, tourism accommodation |
| industrial | fuel depot, industry, motor vehicle repair, storage, vehicle wrecking |
| public utility | electricity supply, essential service distribution network, drinking water supply, wastewater disposal, telecommunications, rubbish disposal |



This Layout Plan does not constitute development approval. It is the responsibility of the developer to ensure that all relevant consents, approvals, licences and clearances are in place prior to commencing physical works on the site. Organisations responsible for such matters may include land owner, local government, incorporated community council, native title representative body, native title prescribed body corporate, Aboriginal Cultural Materials Committee, Environmental Protection Authority, state and federal government departments, and other relevant regulatory authorities. Go to the [PlanWA interactive planning map](#) to view Layout Plans with other spatial layers.

© 2023 Western Australian Land Information Authority Location information data licensed from Western Australian Land Information Authority (WALIA) trading as Landgate. Copyright in the location information data remains with WALIA. WALIA does not warrant the accuracy or completeness of the location information data or its suitability for any particular purpose. Base information and aerial imagery supplied by the Western Australian Land Information Authority SLIP 1447-2023-1. Cadastre date October 2025. May 2021 aerial image. Drinking water source protection area derived from the Punmu Drinking Water Source Protection Plan May 2019, commissioned by the Dept. of Planning, Lands and Heritage.

Settlement layout lots are not derived from calculated dimensions.

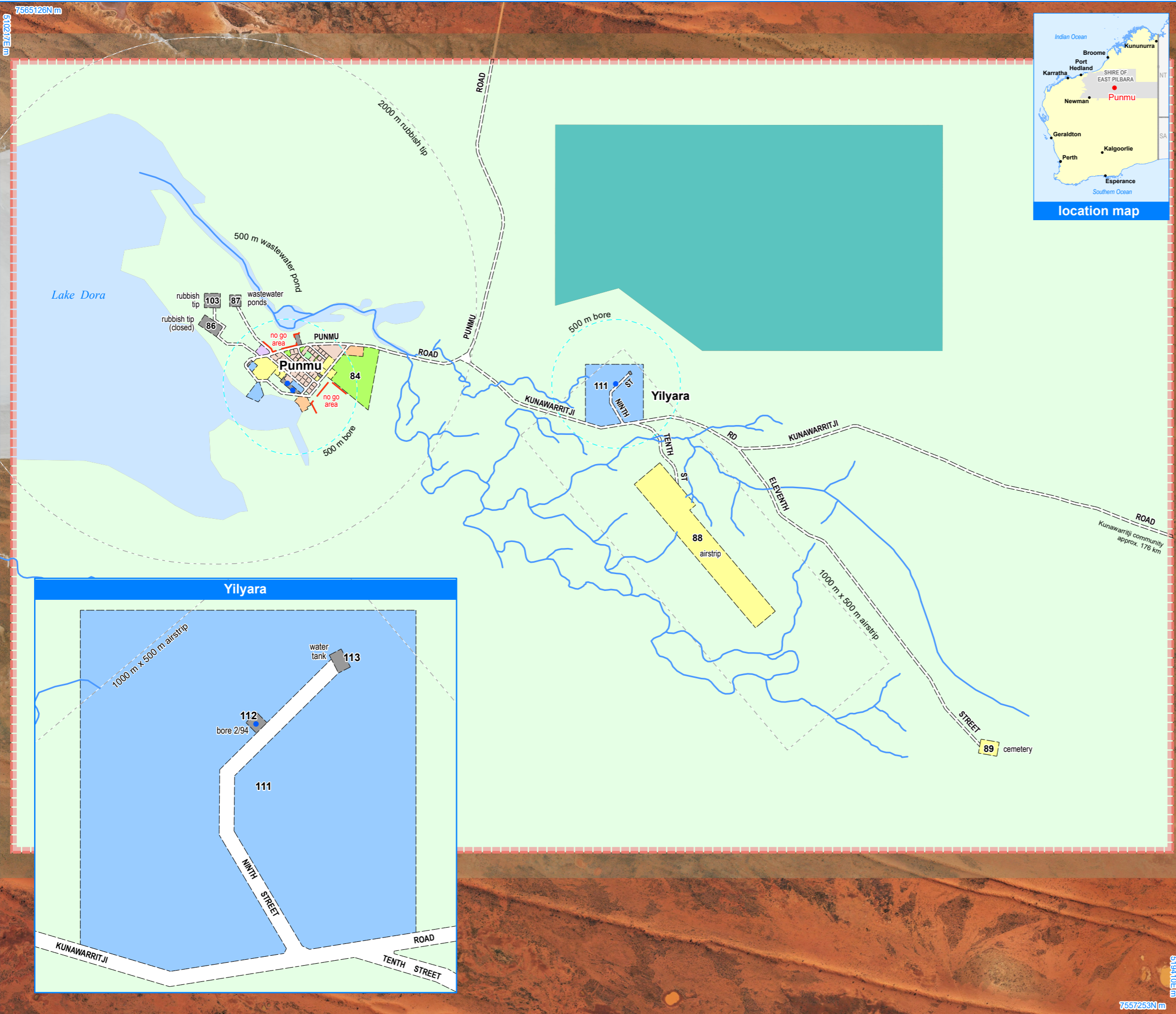
Map document : PunmulP2_Amd5.aprx
Produced by Data Analytics, Department of Planning, Lands & Heritage on behalf of the Western Australian Planning Commission.
© Western Australian Planning Commission 2023



Layout Plan map-sets and background reports

Layout Plan 2 endorsement	
Community	20 June 2007
Local Government	30 March 2007
Traditional Owners	-
WAPC	4 December 2007
Amendment 5 endorsement	
WAPC	14 October 2025

7561716N m
513173E m



Punmu Layout Plan 2 - Context Amendment 5

Features

- production bore

Land Administration

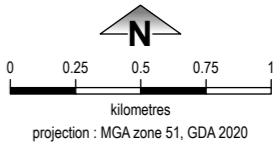
- cadastre
- lodged cadastre
- settlement zone
- settlement layout (SL) lot & SL-lot number

Exclusion Boundary

- drinking water source wellhead protection zone
- no-go area
- utility
- wastewater

Land Use

road reserve	road, essential service distribution network
residential	house, residential quarters
visitor camping	camping ground, traditional law and culture
community	child care premises, civic use, corrective institution, educational establishment, health care centre, worship building
open space	agriculture - extensive, essential service distribution network, traditional law and culture
rural	rural pursuit, agriculture - extensive, animal husbandry - intensive, agriculture - intensive, essential service distribution network
recreation	recreation, essential service distribution network
pedestrian access way	essential service distribution network, pedestrian access way
drinking water source protection area	any use permitted under the Drinking Water Source Protection Plan
waterway	agriculture - extensive, agriculture - intensive, traditional law and culture
commercial	art centre, caravan park, motel, office, service station, shop, tourism accommodation
industrial	fuel depot, industry, motor vehicle repair, storage, vehicle wrecking
public utility	electricity supply, essential service distribution network, drinking water supply, wastewater disposal, telecommunications, rubbish disposal



This Layout Plan does not constitute development approval. It is the responsibility of the developer to ensure that all relevant consents, approvals, licences and clearances are in place prior to commencing physical works on the site. Organisations responsible for such matters may include land owner, local government, incorporated community council, native title representative body, native title prescribed body corporate, Aboriginal Cultural Materials Committee, Environmental Protection Authority, state and federal government departments, and other relevant regulatory authorities. Go to the [PlanWA interactive planning map](#) to view Layout Plans with other spatial layers.

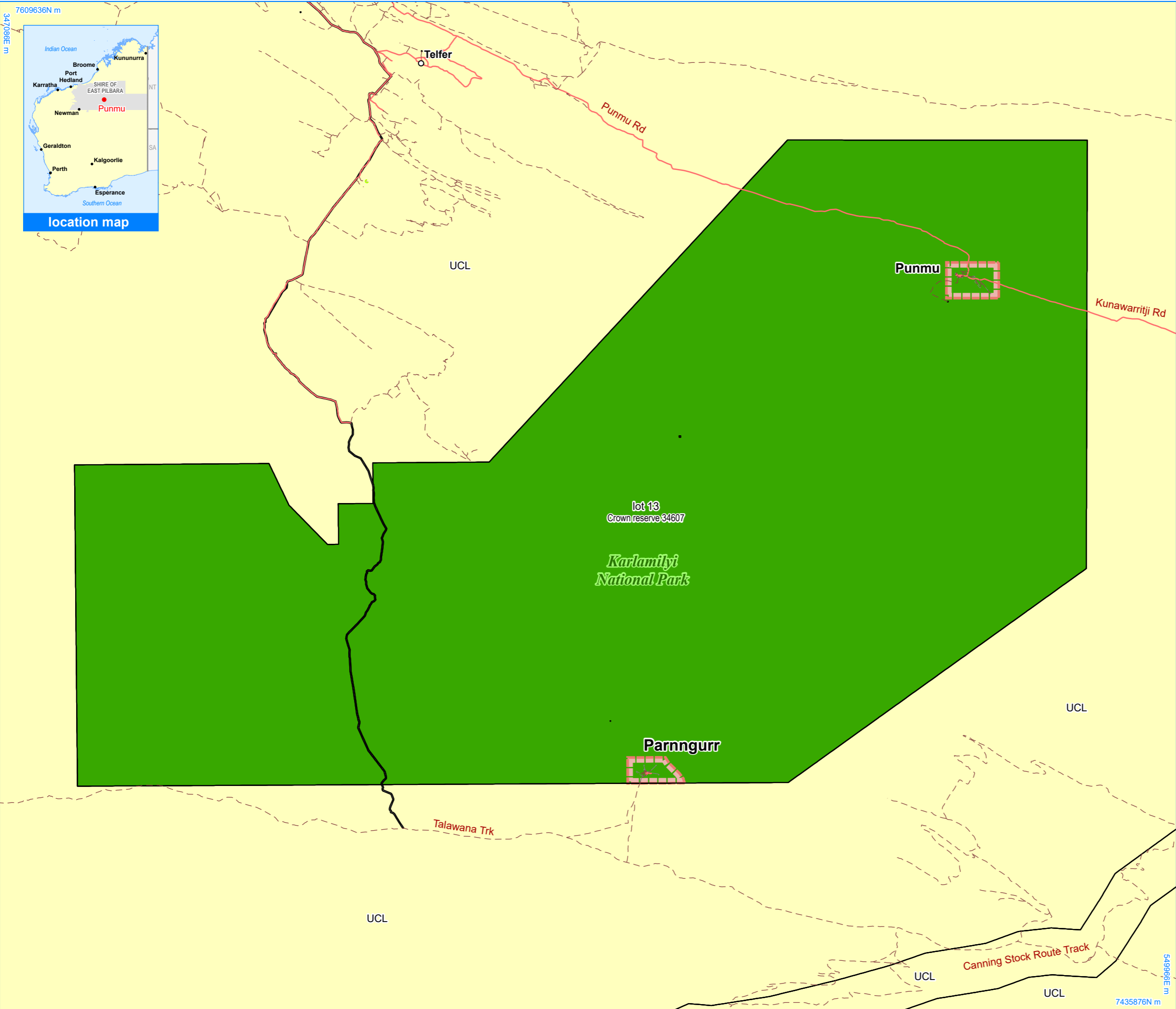
© 2023 Western Australian Land Information Authority Location information data licensed from Western Australian Land Information Authority (WALIA) trading as Landgate. Copyright in the location information data remains with WALIA. WALIA does not warrant the accuracy or completeness of the location information data or its suitability for any particular purpose. Base information and aerial imagery supplied by the Western Australian Land Information Authority SLIP 1447-2023-1. Cadastre date October 2025. May 2021 aerial image. Drinking water source protection area derived from the Punmu Drinking Water Source Protection Plan May 2019, commissioned by the Dept. of Planning, Lands and Heritage.

Settlement layout lots are not derived from calculated dimensions.

Map document : PunmuLP2_Amd5.aprx
Produced by Data Analytics, Department of Planning, Lands & Heritage on behalf of the Western Australian Planning Commission.
© Western Australian Planning Commission 2023



Layout Plan 2 endorsement	
Community	20 June 2007
Local Government	30 March 2007
Traditional Owners	-
WAPC	4 December 2007
Amendment 5 endorsement	
WAPC	14 October 2025

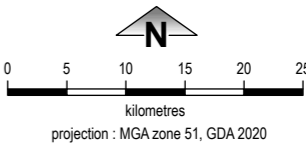


Kunawarritji Layout Plan 1 - Land Tenure Amendment 12

Land Tenure	
crown reserve	
crown reserve	- Aboriginal Lands Trust
Department of Biodiversity, Conservation & Attractions managed	
freehold	
leasehold	
other	
pastoral lease	
pastoral lease	- Aboriginal Lands Trust
unallocated crown land	
water reserve	

Land Administration	
cadastre	
lodged cadastre	
recommended settlement zone	
settlement zone	
settlement layout (SL) lot	

Roads	
national highway	
state highway	
major road	
minor road	
track	



This Layout Plan does not constitute development approval. It is the responsibility of the developer to ensure that all relevant consents, approvals, licences and clearances are in place prior to commencing physical works on the site. Organisations responsible for such matters may include land owner, local government, incorporated community council, native title representative body, native title prescribed body corporate, Aboriginal Cultural Materials Committee, Environmental Protection Authority, state and federal government departments, and other relevant regulatory authorities. Go to the [PlanWA interactive planning map](#) to view Layout Plans with other spatial layers.

© 2023 Western Australian Land Information Authority Location information data licensed from Western Australian Land Information Authority (WALIA) trading as Landgate. Copyright in the location information data remains with WALIA. WALIA does not warrant the accuracy or completeness of the location information data or its suitability for any particular purpose. Base information and aerial imagery supplied by the Western Australian Land Information Authority SLIP 1447-2023-1. Cadastre date October 2025.
Settlement layout lots are not derived from calculated dimensions.
Map document : Punmul.P2_Amd5.aprx
Produced by Data Analytics, Department of Planning, Lands & Heritage on behalf of the Western Australian Planning Commission.
© Western Australian Planning Commission 2023



Layout Plan 2 endorsement	
Community	20 June 2007
Local Government	30 March 2007
Traditional Owners	-
WAPC	4 December 2007
Amendment 5 endorsement	
WAPC	14 October 2025