

ENDORSEMENT PAGE

This structure plan is prepared under the provisions of the City of Armadale
Local Planning Scheme No. 4.

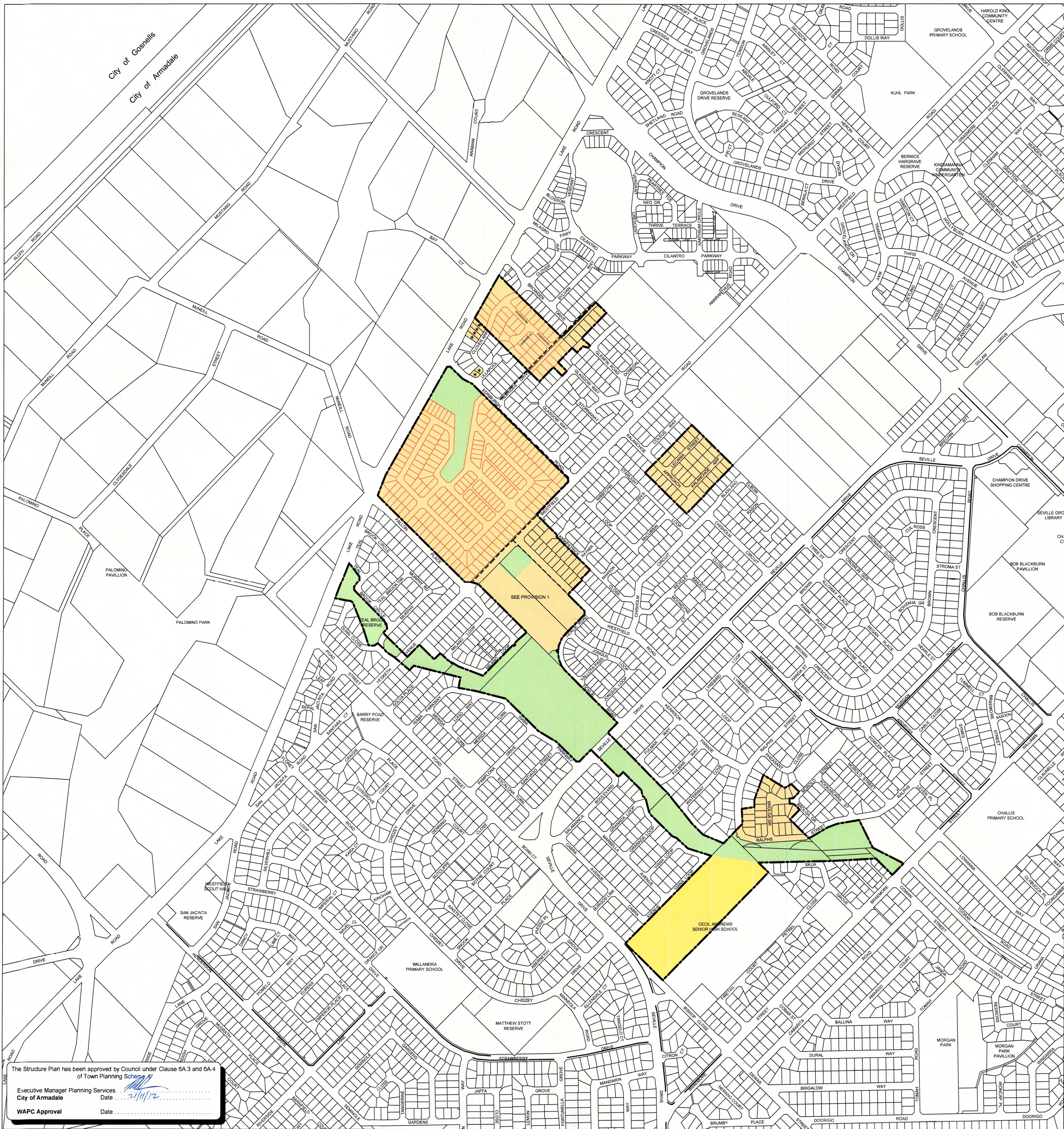
IT IS CERTIFIED THAT THIS STRUCTURE PLAN WAS APPROVED BY RESOLUTION OF THE
WESTERN AUSTRALIAN PLANNING COMMISSION ON:

03 MARCH 2011

In accordance with Schedule 2, Part 4, Clause 28 (2) and refer to Part 1, 2. (b) of the *Planning and Development (Local Planning Schemes) Regulations 2015*.

Date of Expiry:

19 OCTOBER 2030



The Structure Plan has been approved by Council under Clause 6A.3 and 6A.4 of Town Planning Scheme No. 4 of Armadale
Executive Manager Planning Services
City of Armadale
WAPC Approval
Date

LEGEND

- R30 / R40 Grouped Housing
- Public Open Space & Drainage Reserve
- Public Purpose
- Residential
- Land subject to a Detailed Area Plan (DAP) prepared under Clause 6A.5 of the Town Planning Scheme No.4. All development shall be in accordance with an approved DAP.
- Note: 10% POS cash in lieu required where 10% POS land is not ceded by subdividers.
- A14 Boundary
- Proposed Subdivision
- CYCLEWAYS (Proposed) (Existing)
- TRAFFIC MANAGEMENT DEVICES Roundabout
- Provision 1: Detailed Lot and road layout to be prepared via a structure plan amendment.

INCORPORATES APPROVED SUBDIVISIONS AND MODIFICATIONS ADOPTED BY COUNCIL

ISSUE / DATE	INFORMATION INCORPORATED IN ISSUE	ISSUE / DATE	INFORMATION INCORPORATED IN ISSUE
0 / JUL 1990	T483/81, T27/83 P213/84, P38/84, P387/87 & P54/89.	17 / JAN 2005	Outline Development altered for Lot 24 and Lot 25 Seville Drive.
1 / SEP 1990	TS82/198, Legend: (School Site to Public Purpose) Correction to Zoning Cecil Andrews SHS. Cycleways updated, Approved Subdivisions added.	13 / OCT 2005	Outline Development altered for ARA areas.
2 / NOV 1990	P466/90, P417/90, Approved Subdivisions Added.	21 / APR 2006	Various minor amendments including removal of lower density R Codes, listing of medium density R Codes, designation of new medium density zonings & removal of PAW between Lyrebird Loop & Kerrison Parade.
6 / APR 1992	Westfield Road Offset Intersection Option & Traffic Management Devices	FEB 2007	City resolved to revoke a portion of A14 Structure Plan.
7 / MAY 1992	Champion Drive Service Station / Road Widening Subdivision Added.	13 / MAR 2007	Ref No. 35.2006.20.1 approved by the City of Armadale.
10 - 18	FEB 94 - MAR 98 Approved Subdivisions Added.	01 / AUG 2007	WAPC resolved to revoke a portion of A14 Structure Plan.
19 / DEC 1999	Approved Subdivisions Added and Outline Development altered for Lots 18 & 19 Westfield Road.	07 / FEB 2011	WAPC resolved to revoke a portion of A14 Structure Plan.
20 / DEC 1999	Outline Development altered for Lot 2 Lake Road.	03 / MAR 2011	Ref No. 35.2010.7.1 approved by the WAPC.
21 / MAR 2000	Outline Development altered for Lot 3,4, Pt44, Poad St & Pt3, Pt14, & Pt45 Seville Drive.	21 / NOV 2012	Adopted by City 21/11/12 under Clause 6A.4 refer OUT/11587/12 no response from WAPC
11 / NOV 2004	Outline Development altered for Lot 6 Hesketh Ave.		
11 / NOV 2004	Outline Development altered for Lot 12 & Pt Lot 24 Ralphs St & Lots 27 & 503 Braemore Street		