

ENDORSEMENT

This structure plan is prepared under the provisions of the Shire of Denmark
Local Planning Scheme No. 3.

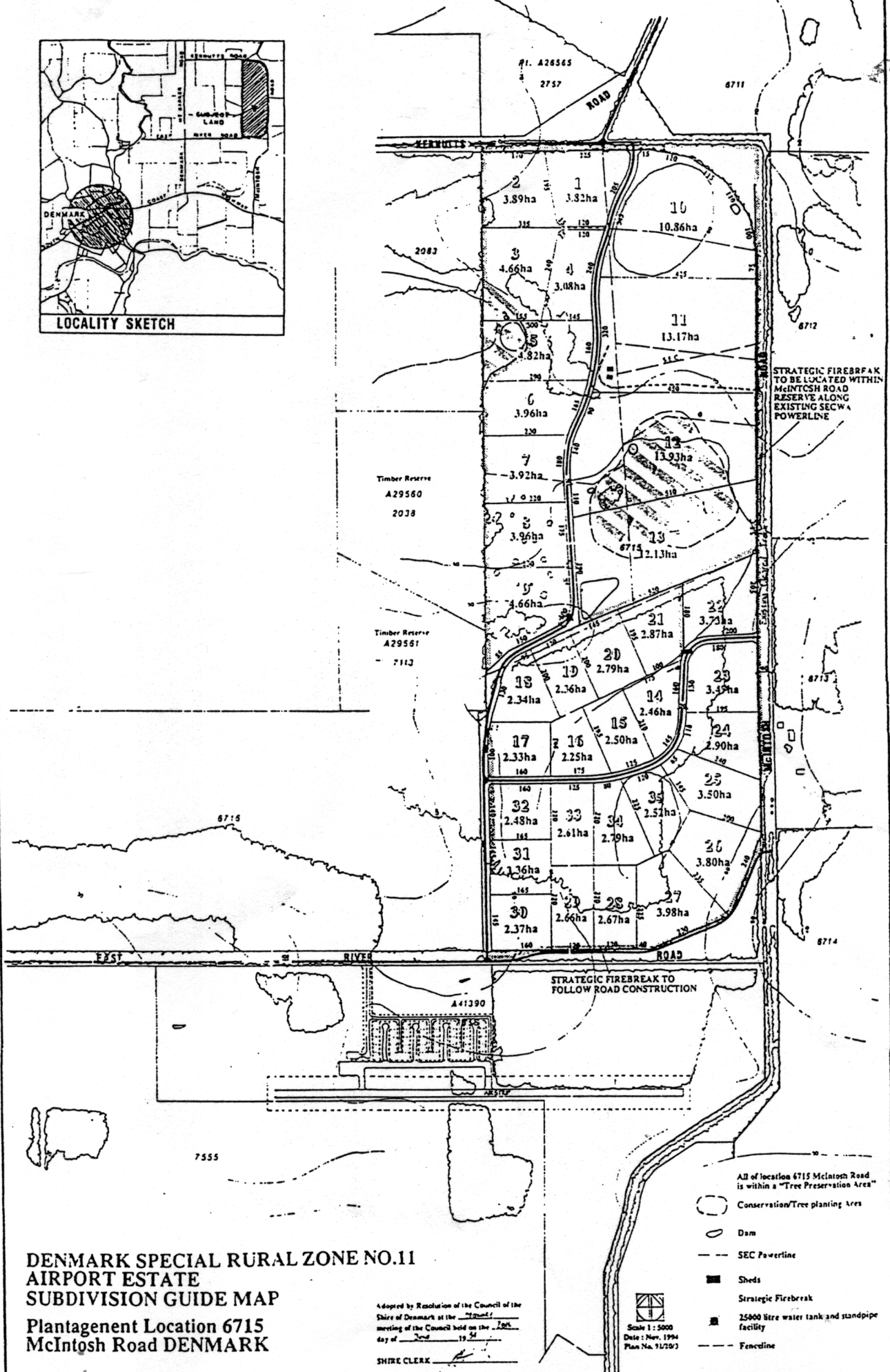
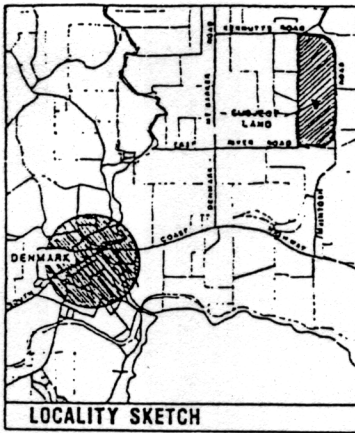
IT IS CERTIFIED THAT THIS STRUCTURE PLAN WAS APPROVED BY RESOLUTION OF THE
WESTERN AUSTRALIAN PLANNING COMMISSION ON:

20 JUNE 1994

In accordance with Schedule 2, Part 4, Clause 28 (2) and refer to Part 1, 2. (b) of the *Planning and
Development (Local Planning Schemes) Regulations 2015*.

Date of Expiry:

19 OCTOBER 2028



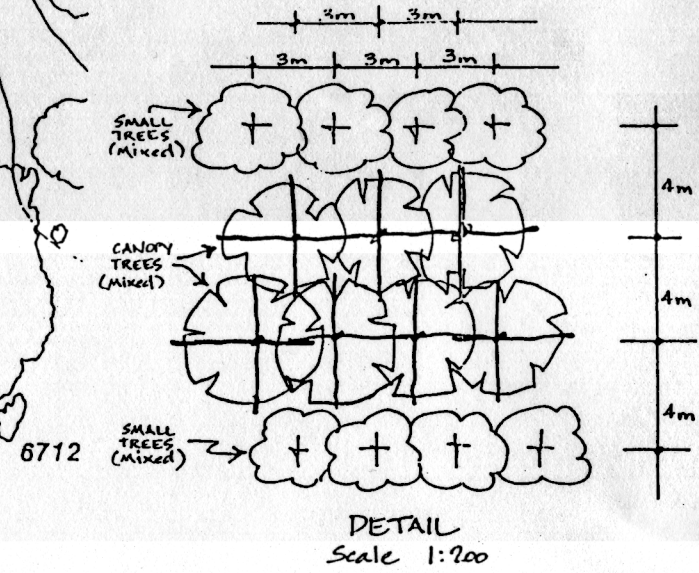
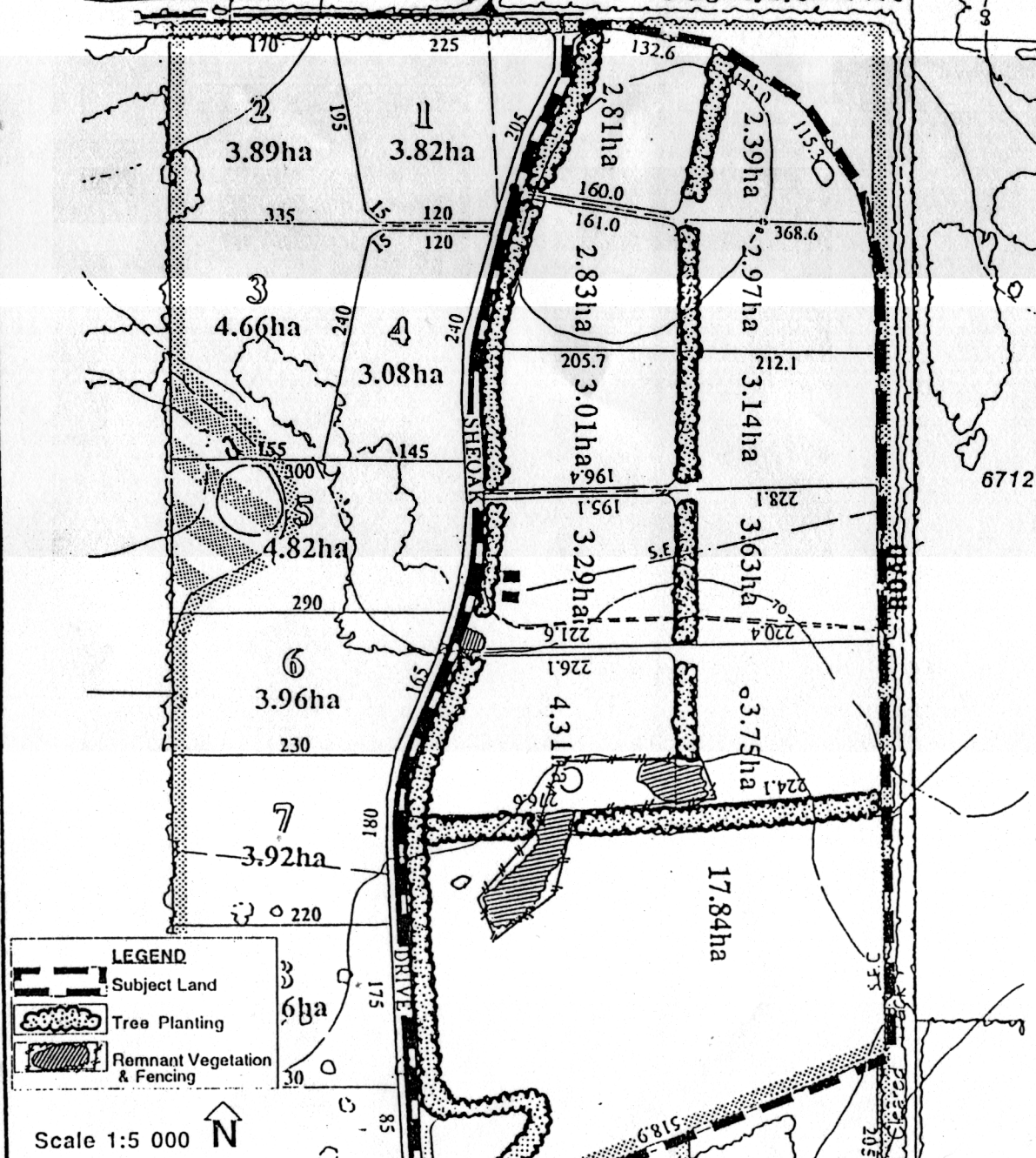
**DENMARK SPECIAL RURAL ZONE NO.11
AIRPORT ESTATE
SUBDIVISION GUIDE MAP**

**Plantagenet Location 6715
McIntosh Road DENMARK**

Adopted by Resolution of the Council of the
Shire of Denmark at the 72nd
meeting of the Council held on the 20th
day of June 19 94

SHIRE CLERK





Tree Planting Plan
 Lots 10, 11, 12 & 13 Sheoak Drive,
 Denmark