

Lombadina Layout Plan 3 - Living Area Draft Version 11

Features

- production bore

Land Administration

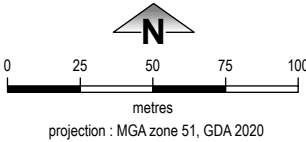
- cadastral
- settlement zone
- Special Control Area 8, Shire of Broome
- settlement layout (SL) lot & SL-lot number

Exclusion Boundary

- drinking water source wellhead protection zone
- industry
- no-go area
- wastewater

Land Use (see [Aboriginal Settlements Guideline](#))

road reserve	road, essential service distribution network
residential	house, residential quarters
visitor camping	camping ground, traditional law and culture
community	child care premises, civic use, corrective institution, educational establishment, health care centre, worship building
open space	agriculture - extensive, essential service distribution network, traditional law and culture
rural	rural pursuit, agriculture - extensive, animal husbandry - intensive, agriculture - intensive, essential service distribution network
recreation	recreation, essential service distribution network
pedestrian access way	essential service distribution network, pedestrian access way
drinking water source protection area	any use permitted under the Drinking Water Source Protection Plan
waterway	agriculture - extensive, agriculture - intensive, traditional law and culture
commercial	art centre, caravan park, motel, office, service station, shop, tourism accommodation
industrial	fuel depot, industry, motor vehicle repair, storage, vehicle wrecking
public utility	electricity supply, essential service distribution network, drinking water supply, wastewater disposal, telecommunications, rubbish disposal



This Layout Plan does not constitute development approval. It is the responsibility of the developer to ensure that all relevant consents, approvals, licences and clearances are in place prior to commencing physical works on the site. Organisations responsible for such matters may include land owner, local government, incorporated community council, native title representative body, native title prescribed body corporate, Aboriginal Cultural Materials Committee, Environmental Protection Authority, state and federal government departments, and other relevant regulatory authorities. Go to the [PlanWA interactive planning map](#) to view Layout Plans with other spatial layers.

© 2023 Western Australian Land Information Authority Location information data licensed from Western Australian Land Information Authority (WALIA) trading as Landgate. Copyright in the location information data remains with WALIA. WALIA does not warrant the accuracy or completeness of the location information data or its suitability for any particular purpose. Base information and aerial imagery supplied by the Western Australian Land Information Authority SLIP 1447-2023-1. Cadastre date November 2025. October 2022 aerial image. Drinking water source protection area derived from the Djarindjin Community Drinking Water Source Protection Plan October 2010, commissioned by the Dept. of Communities (Housing). All construction and developer proponents to refer to the 'Coastal Vulnerability Assessments for Localities in the Shire of Broome - Bardl Jawi Final Report'.

Settlement layout lots are not derived from calculated dimensions.

Map document : LombadinaLP3_RatifiedDraft11.aprx

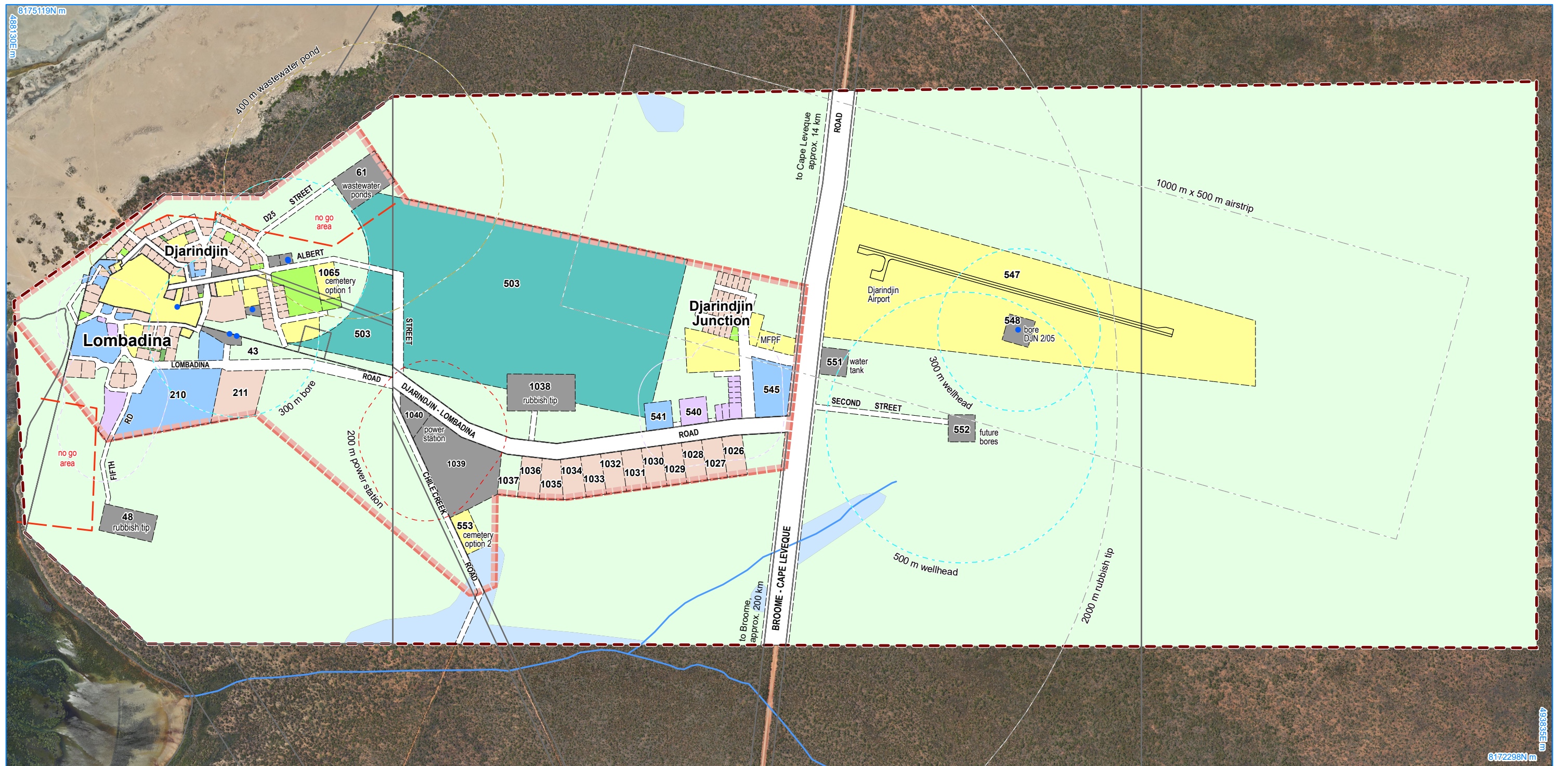
Produced by Data Analytics, Department of Planning, Lands & Heritage on behalf of the Western Australian Planning Commission.

© Western Australian Planning Commission 2023

 **WAPC** Western Australian Planning Commission

[Layout Plan map-sets and background reports](#)

Layout Plan X endorsement	
Community	-
Local Government	-
Traditional Owners	-
RATIFIED DRAFT	
WAPC 26 October 2020	
Amendment Y endorsement	
WAPC	-



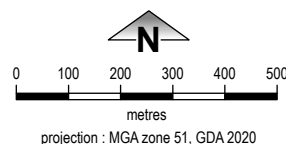
Lombadina Layout Plan 3 (and Djarindjin) - Context

Draft Version 11



This Layout Plan does not constitute development approval. It is the responsibility of the developer to ensure that all relevant consents, approvals, licences and clearances are in place prior to commencing physical works on the site. Organisations responsible for such matters may include land owner, local government, incorporated community council, native title representative body, native title prescribed body corporate, Aboriginal Cultural Materials Committee, Environmental Protection Authority, state and federal government departments, and other relevant regulatory authorities. Go to the [PlanWA interactive planning map](#) to view Layout Plans with other spatial layers.

Layout Plan X endorsement	
Community	-
Local Government	-
Traditional Owners	-
RATIFIED DRAFT	
WAPC 26 October 2020	
Amendment Y endorsement	
WAPC	-



© 2023 Western Australian Land Information Authority Location information data licensed from Western Australian Land Information Authority (WALIA) trading as Landgate. Copyright in the location information data remains with WALIA. WALIA does not warrant the accuracy or completeness of the location information data or its suitability for any particular purpose. Base information and aerial imagery supplied by the Western Australian Land Information Authority SLIP 1447-2023-1. Cadastre date November 2025. October 2022 aerial image. Drinking water source protection area derived from the Djarindjin Community Drinking Water Source Protection Plan October 2010, commissioned by the Dept. of Communities (Housing). All construction and developer proponents to refer to the 'Coastal Vulnerability Assessments for Localities in the Shire of Broome - Bardi Jawi Final Report'. Settlement layout lots are not derived from calculated dimensions. Map document : LombadinaLP3_RatifiedDraft11.aprx Produced by Data Analytics, Department of Planning, Lands & Heritage on behalf of the Western Australian Planning Commission. © Western Australian Planning Commission 2023

Land Use

road reserve	road, essential service distribution network
residential	house, residential quarters
visitor camping	camping ground, traditional law and culture
community	child care premises, civic use, corrective institution, educational establishment, health care centre, worship building
open space	agriculture - extensive, essential service distribution network, traditional law and culture
rural	rural pursuit, agriculture - extensive, animal husbandry - intensive, agriculture - intensive, essential service distribution network
recreation	recreation, essential service distribution network
pedestrian access way	essential service distribution network, pedestrian access way
drinking water source protection area	any use permitted under the Drinking Water Source Protection Plan
waterway	agriculture - extensive, agriculture - intensive, traditional law and culture
commercial	art centre, caravan park, motel, office, service station, shop, tourism accommodation
industrial	fuel depot, industry, motor vehicle repair, storage, vehicle wrecking
public utility	electricity supply, essential service distribution network, drinking water supply, wastewater disposal, telecommunications, rubbish disposal

Features

●	production bore
—	as-constructed miscellaneous feature
—	watercourse

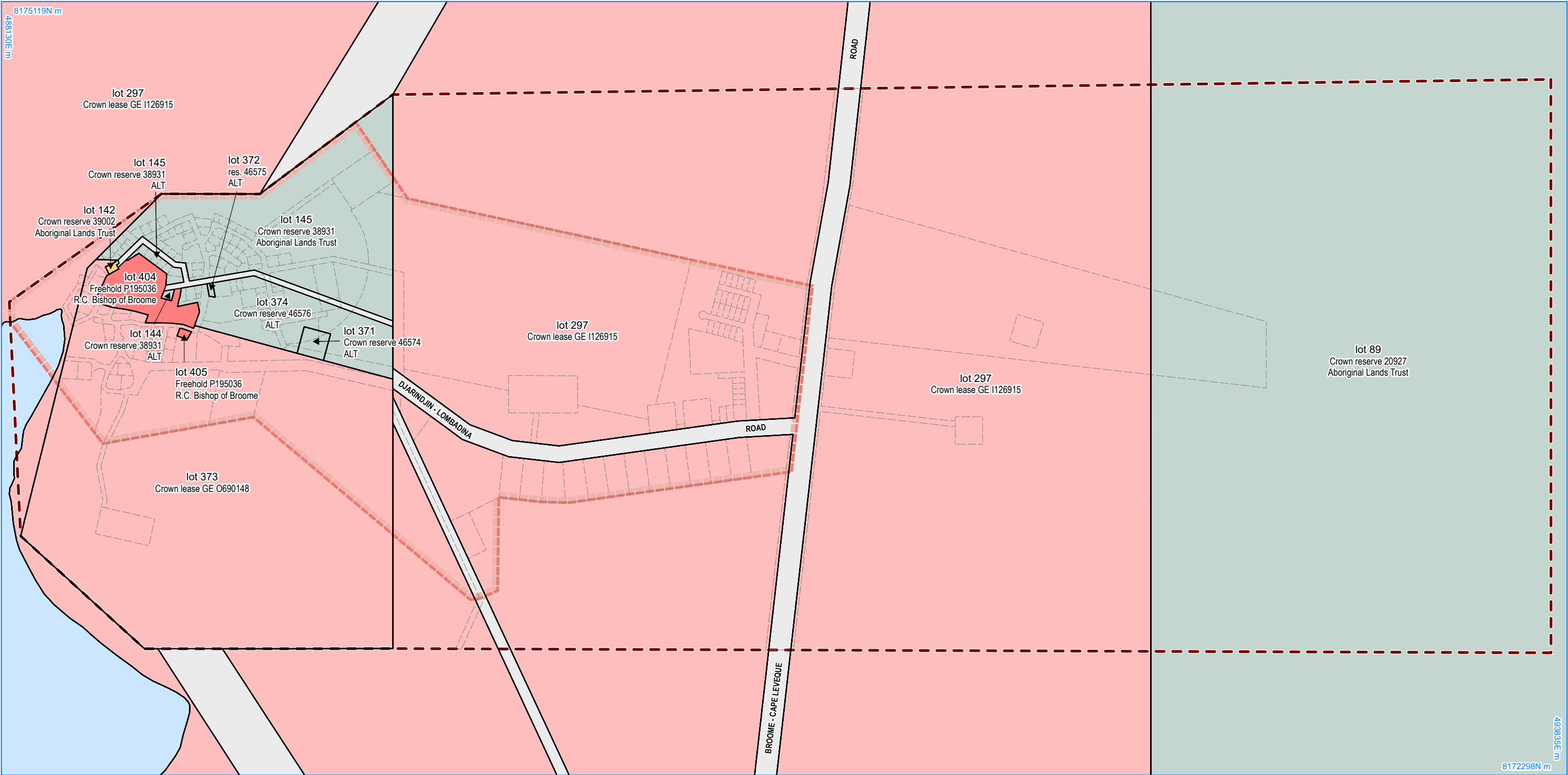
Land Administration

—	cadastre
—	lodged cadastre
—	settlement zone
—	Special Control Area 8, Shire of Broome
63	settlement layout (SL) lot & SL-lot number

Exclusion Boundary


—	drinking water source wellhead protection zone
—	industry
—	no-go area
—	power station
—	utility
—	wastewater





Lombadina Layout Plan 3 (and Djarindjin) - Land Tenure

Draft Version 11



Western Australian Planning Commission

This Layout Plan does not constitute development approval. It is the responsibility of the developer to ensure that all relevant consents, approvals, licences and clearances are in place prior to commencing physical works on the site. Organisations responsible for such matters may include land owner, local government, incorporated community council, native title representative body, native title prescribed body corporate, Aboriginal Cultural Materials Committee, Environmental Protection Authority, state and federal government departments, and other relevant regulatory authorities. Go to the [PlanWA interactive planning map](#) to view Layout Plans with other spatial layers.

Layout Plan X endorsement

Community

Local Government

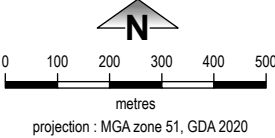
Traditional Owners

RATIFIED DRAFT

WAPC 26 October 2020

Amendment Y endorsement

WAPC



© 2023 Western Australian Land Information Authority Location information data licensed from Western Australian Land Information Authority (WALIA) trading as Landgate. Copyright in the location information data remains with WALIA. WALIA does not warrant the accuracy or completeness of the location information data or its suitability for any particular purpose. Base information and aerial imagery supplied by the Western Australian Land Information Authority SLIP 1447-2023-1. Cadastre date November 2025.

Drinking water source protection area derived from the Djarindjin Community Drinking Water Source Protection Plan October 2010, commissioned by the Dept. of Communities (Housing). All construction and developer proponents to refer to the 'Coastal Vulnerability Assessments for Localities in the Shire of Broome - Bardi Jawi Final Report'.

Settlement layout lots are not derived from calculated dimensions.

Map document : LombadinaLP3_RatifiedDraft11.aprx
Produced by Data Analytics, Department of Planning, Lands & Heritage on behalf of the Western Australian Planning Commission.
© Western Australian Planning Commission 2023

Land Tenure	
crown reserve	
crown reserve	- Aboriginal Lands Trust
Department of Biodiversity, Conservation & Attractions managed	
freehold	
leasehold	
other	
pastoral lease	
pastoral lease	- Aboriginal Lands Trust
unallocated crown land	
water reserve	

Land Administration	
cadastre	
lodged cadastre	
settlement zone	
Special Control Area 8, Shire of Broome	
settlement layout (SL) lot	

