



## Warrum Layout Plan 2 - Living Area

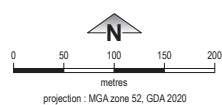
## Amendment 18



**WAPC**  
Western Australian Planning Commission

This Layout Plan does not constitute development approval. It is the responsibility of the developer to ensure that all relevant consents, approvals, licences and clearances are in place prior to commencing physical works on the site. Organisations responsible for such matters may include land owner, local government, incorporated community council, native title representative body, native title prescribed body corporate, Aboriginal Cultural Materials Committee, Environmental Protection Authority, state and federal government departments, and other relevant regulatory authorities. Go to the [PlanVA Interactive planning map](#) to view Layout Plans with other spatial layers.

| Layout Plan 2 endorsement |                  |
|---------------------------|------------------|
| Community                 | 13 July 2005     |
| Local Government          | 25 August 2005   |
| Traditional Owners        | -                |
| WAPC                      | 21 February 2006 |
| Amendment 18 endorsement  |                  |
| WAPC                      | 4 November 2025  |



### Layout Plan map-sets and background reports

© 2023 Western Australian Land Information Authority Location information data licensed from Western Australian Land Information Authority (WALIA) trading as Landgate. Copyright in the location information data remains with WALIA. WALIA does not warrant the accuracy or completeness of the location information data or its suitability for any particular purpose. Base information and aerial imagery supplied by the Western Australian Land Information Authority SLIP 1447-2023-1. Cadastre, November 2025. Aerial image, August 2025. Drinking water source protection area derived from the Warrum Drinking Water Source Protection Plan October 2010 commissioned by the Department of Communities (Housing). Settlement layout lots are not derived from calculated dimensions. Map document: WarrumLP2\_Amd18.aprx Produced by Data Analytics, Department of Planning, Lands & Heritage on behalf of the Western Australian Planning Commission. © Western Australian Planning Commission 2024

### Land Use (see Aboriginal Settlements Guideline)

|                                       |  |
|---------------------------------------|--|
| road reserve                          | road, essential service distribution network   |
| residential                           | house, residential quarters  |
| visitor camping                       | camping ground, traditional law and culture  |
| open space                            | child care premises, civic use, corrective institution, educational establishment, health care centre, worship building                      |
| rural                                 | agriculture - extensive, essential service distribution network, traditional law and culture   |
| recreation                            | recreation, essential service distribution network   |
| pedestrian access way                 | essential service distribution network, pedestrian access way  |
| drinking water source protection area | any use permitted under the Drinking Water Source Protection Plan  |
| waterway                              | agriculture - extensive, agriculture - intensive, traditional law and culture  |
| commercial                            | art centre, caravan park, motel, office, service station, shop, tourism accommodation  |
| industrial                            | fuel depot, industry, motor vehicle repair, storage, vehicle wrecking  |
| public utility                        | electricity supply, essential service distribution network, drinking water supply, wastewater disposal, telecommunications, rubbish disposal |

### Features

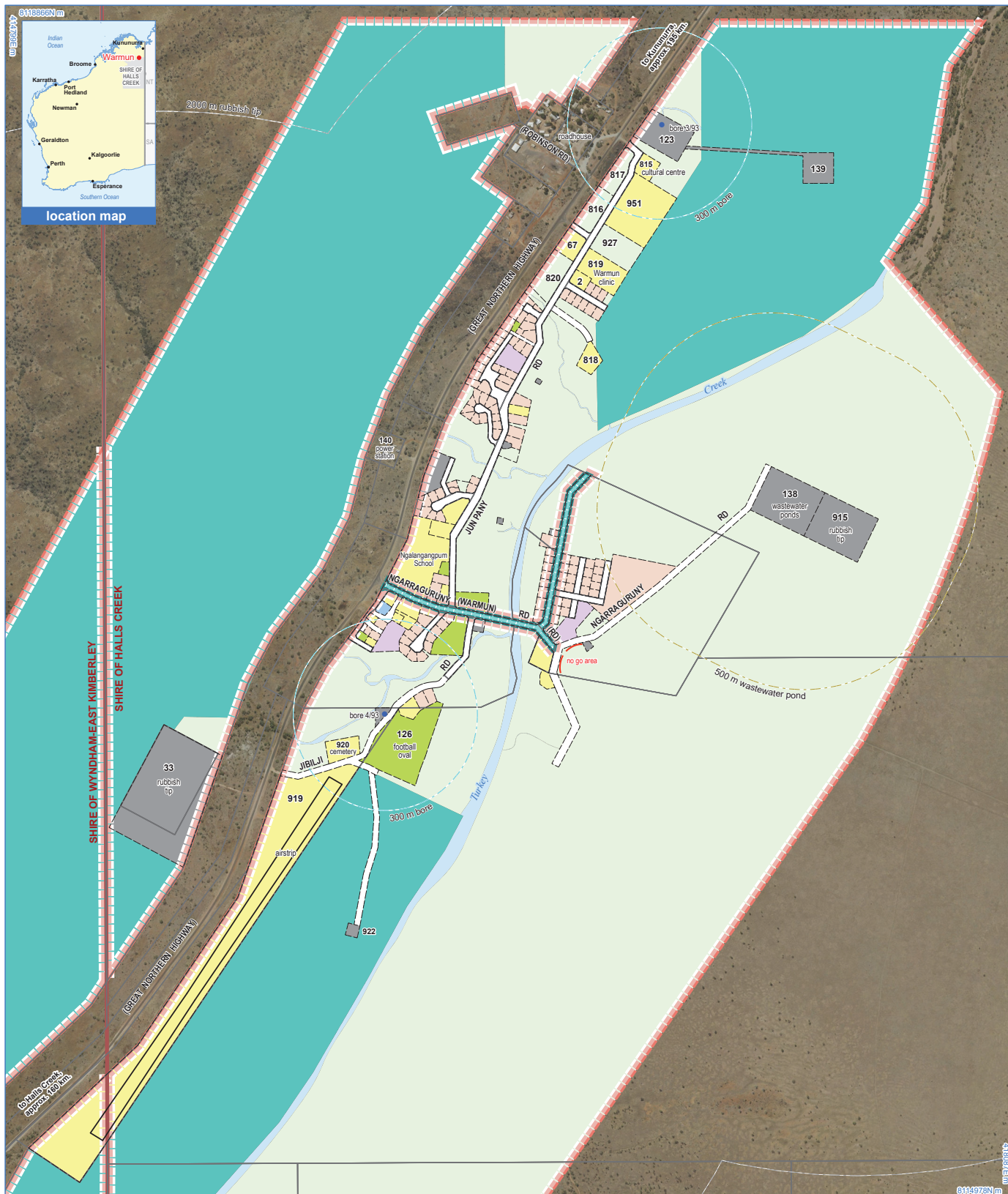
● bore

### Land Administration

|  |
|--|
| cadastre                                   |
| lodged cadastre                            |
| recommended settlement zone                |
| settlement zone                            |
| settlement layout (SL) lot & SL-lot number |
| SL-road name                               |
| dedicated road name                        |

### Exclusion Boundary

|  |
|--|
| drinking water source wellhead protection zone |
| industry                                       |
| no-go area                                     |
| wastewater                                     |



## Warmun Layout Plan 2 - Context

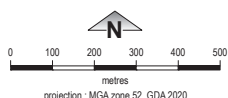
## Amendment 18



**WAPC**  
Western Australian Planning Commission

This Layout Plan does not constitute development approval. It is the responsibility of the developer to ensure that all relevant consents, approvals, licences and clearances are in place prior to commencing physical works on the site. Organisations responsible for such matters may include land owner, local government, incorporated community council, native title representative body, native title prescribed body corporate, Aboriginal Cultural Materials Committee, Environmental Protection Authority, state and federal government departments, and other relevant regulatory authorities. Go to the [PlanWA Interactive planning map](#) to view Layout Plans with other spatial layers.

| Layout Plan 2 endorsement |                  |
|---------------------------|------------------|
| Community                 | 13 July 2005     |
| Local Government          | 25 August 2005   |
| Traditional Owners        | -                |
| WAPC                      | 21 February 2006 |
| Amendment 18 endorsement  |                  |
| WAPC                      | 4 November 2025  |



© 2023 Western Australian Land Information Authority Location information data licensed from Western Australian Land Information Authority (WALIA) trading as Landgate. Copyright in the location information data remains with WALIA. WALIA does not warrant the accuracy or completeness of the location information data or its suitability for any particular purpose. Base information and aerial imagery supplied by the Western Australian Land Information Authority SLIP 1447-2023-1. Cadastre, November 2025. Aerial image, August 2025. Drinking water source protection area derived from the Warmun Drinking Water Source Protection Plan October 2010 commissioned by the Department of Communities (Housing). Settlement layout lots are not derived from calculated dimensions. Map document: WarmunLP2\_Amd18.aprx Produced by Data Analytics, Department of Planning, Lands & Heritage on behalf of the Western Australian Planning Commission. © Western Australian Planning Commission 2024

### Land Use

|                                       |  |
|---------------------------------------|--|
| road reserve                          | road, essential service distribution network   |
| residential                           | house, residential quarters  |
| visitor camping                       | camping ground, traditional law and culture  |
| community                             | child care premises, civic use, corrective institution, educational establishment, health care centre, worship building                      |
| open space                            | agriculture - extensive, essential service distribution network, traditional law and culture   |
| rural                                 | rural pursuit, agriculture - extensive, animal husbandry - intensive, agriculture - intensive, essential service distribution network        |
| recreation                            | recreation, essential service distribution network   |
| pedestrian access way                 | essential service distribution network, pedestrian access way  |
| drinking water source protection area | any use permitted under the Drinking Water Source Protection Plan  |
| waterway                              | agriculture - extensive, agriculture - intensive, traditional law and culture  |
| commercial                            | art centre, caravan park, motel, office, service station, shop, tourism accommodation  |
| industrial                            | fuel depot, industry, motor vehicle repair, storage, vehicle wrecking  |
| public utility                        | electricity supply, essential service distribution network, drinking water supply, wastewater disposal, telecommunications, rubbish disposal |

### Features

- bore
- as-constructed miscellaneous feature

### Land Administration

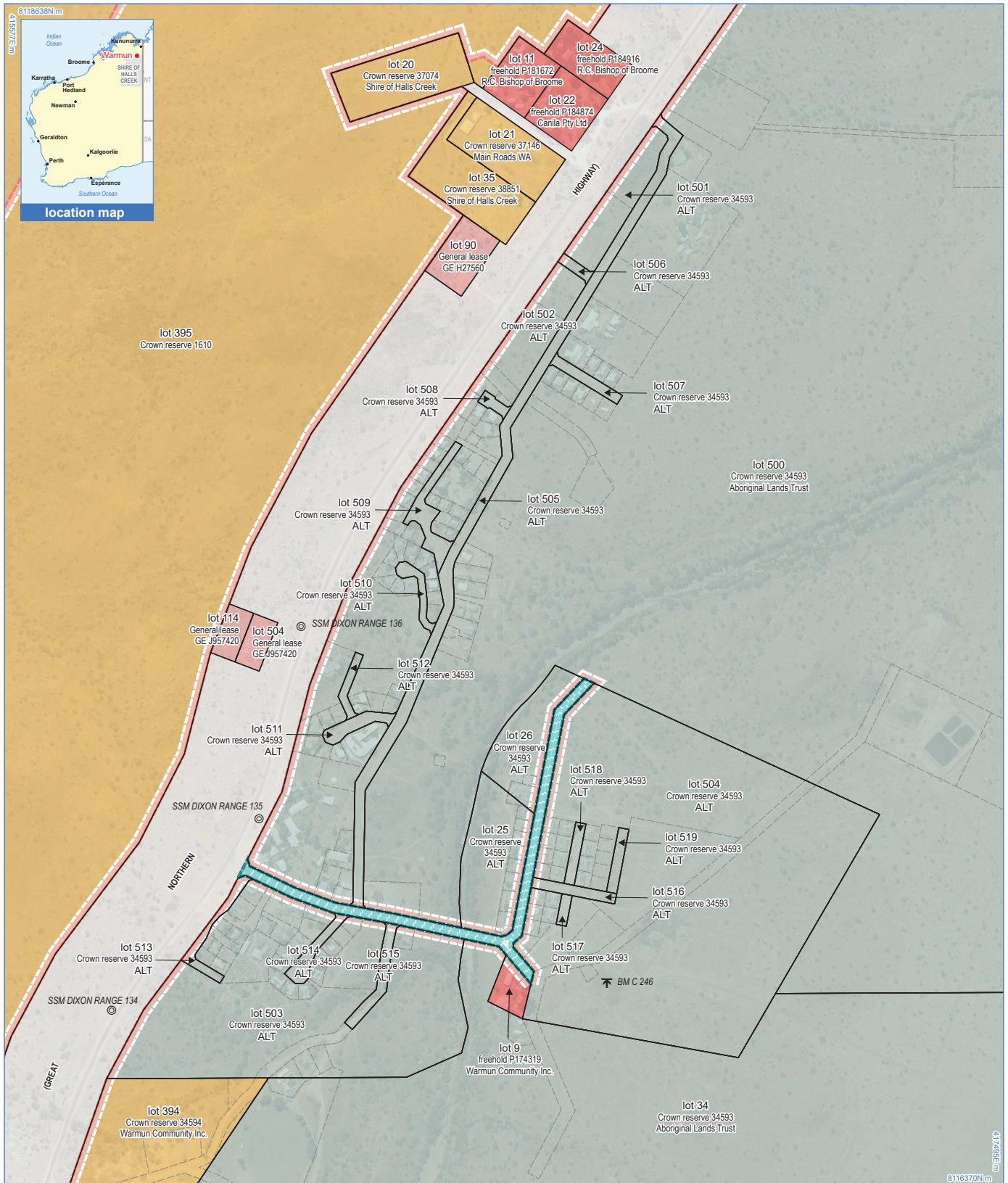
- cadastre
- local government area
- lodged cadastre
- recommended settlement zone
- settlement zone
- settlement layout (SL) lot & SL-lot number
- SL-road name
- dedicated road name

### Exclusion Boundary

- drinking water source wellhead protection zone
- no-go area
- utility
- wastewater







## Warmun Layout Plan 2 - Land Tenure Closeup

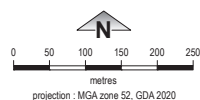
## Amendment 18



**WAPC** Western Australian Planning Commission

This Layout Plan does not constitute development approval. It is the responsibility of the developer to ensure that all relevant consents, approvals, licences and clearances are in place prior to commencing physical works on the site. Organisations responsible for such matters may include land owner, local government, incorporated community council, native title representative body, native title prescribed body corporate, Aboriginal Cultural Materials Committee, Environmental Protection Authority, state and federal government departments, and other relevant regulatory authorities. Go to the [PlanVIA interactive planning map](#) to view Layout Plans with other spatial layers.

| Layout Plan 2 endorsement |                  |
|---------------------------|------------------|
| Community                 | 13 July 2005     |
| Local Government          | 25 August 2005   |
| Traditional Owners        | -                |
| WAPC                      | 21 February 2006 |
| Amendment 18 endorsement  |                  |
| WAPC                      | 4 November 2025  |



© 2023 Western Australian Land Information Authority Location information data licensed from Western Australian Land Information Authority (WALIA) trading as Landgate. Copyright in the location information data remains with WALIA. WALIA does not warrant the accuracy or completeness of the location information data or its suitability for any particular purpose. Base information and aerial imagery supplied by the Western Australian Land Information Authority SLIP 1447-2025-1. Cadastre, November 2025. Aerial image, August 2025. Settlement layout lots are not derived from calculated dimensions. Map document: WarmunLP2\_Amd18.aprx Produced by Data Analytics, Department of Planning, Lands & Heritage on behalf of the Western Australian Planning Commission. © Western Australian Planning Commission 2024

### Land Tenure

|  |                          |
|--|--------------------------|
| crown reserve  |                          |
| crown reserve  | - Aboriginal Lands Trust |
| Department of Biodiversity, Conservation & Attractions managed |                          |
| freehold   |                          |
| leasehold  |                          |
| other  |                          |
| pastoral lease   |                          |
| pastoral lease   | - Aboriginal Lands Trust |
| unallocated crown land   |                          |
| water reserve  |                          |

### Geodetic Survey Marks

|  |                      |
|--|----------------------|
|  | benchmark            |
|  | standard survey mark |

### Land Administration

|  |                             |
|--|-----------------------------|
|  | cadastre                    |
|  | lodged cadastral            |
|  | recommended settlement zone |
|  | settlement zone             |
|  | settlement layout (SL) lot  |