

In case of emergency, Dial 000

Forest Products Commission Initial Fire Response Map

Meerup 1 Plantation

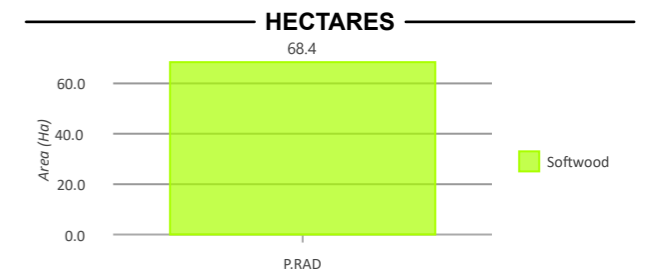
Map 1 of 1
SHIRE OF MANJIMUP

DBCA District: DONNELLY

FPC Fire Duty Officer: 9725 5288

LEGEND

- | | |
|--|--|
| <ul style="list-style-type: none"> FPC Points of Interest Bore House Water Point Fire Water Point - Tank Distribution Overhead Powerlines (WP-031) FPC Lines of Interest Access Track Roads (LGATE-012) Minor Road (Sealed) Minor Road (Unsealed) Track (Unsealed) Other Tenure (LGATE-226) Tenure (LGATE-226) Water Points (LGATE-017) Earth Dam | <ul style="list-style-type: none"> Water Courses (LGATE-018) Minor River Inland Flat (LGATE-099) Subject to Inundation Water Bodies (LGATE-016) Water Body Swamp/Wetland Local Government Authority (LGATE-233) Operational Fire Breaks Access Track Fire Break (6m) Fire Break (15m) Fire Break (20m) Surrounding FPC Plantations Softwood FPC Plantations Softwood Cannister Maps Index - Landscape DBCA District Boundaries (DBCA-023) |
|--|--|



14 Nov 2025 02:57 PM

The Forest Products Commission does not guarantee that this map is without flaw of any kind and disclaims all liability for error, loss or other consequence which may arise from relying on any information depicted.

© 2025 Western Australian Land Information Authority



fpc Forest Products Commission

Leaflet | Map data © OpenStreetMap contributors, Imagery © Mapbox

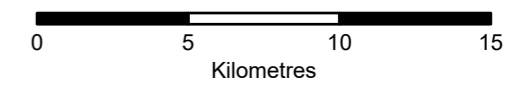
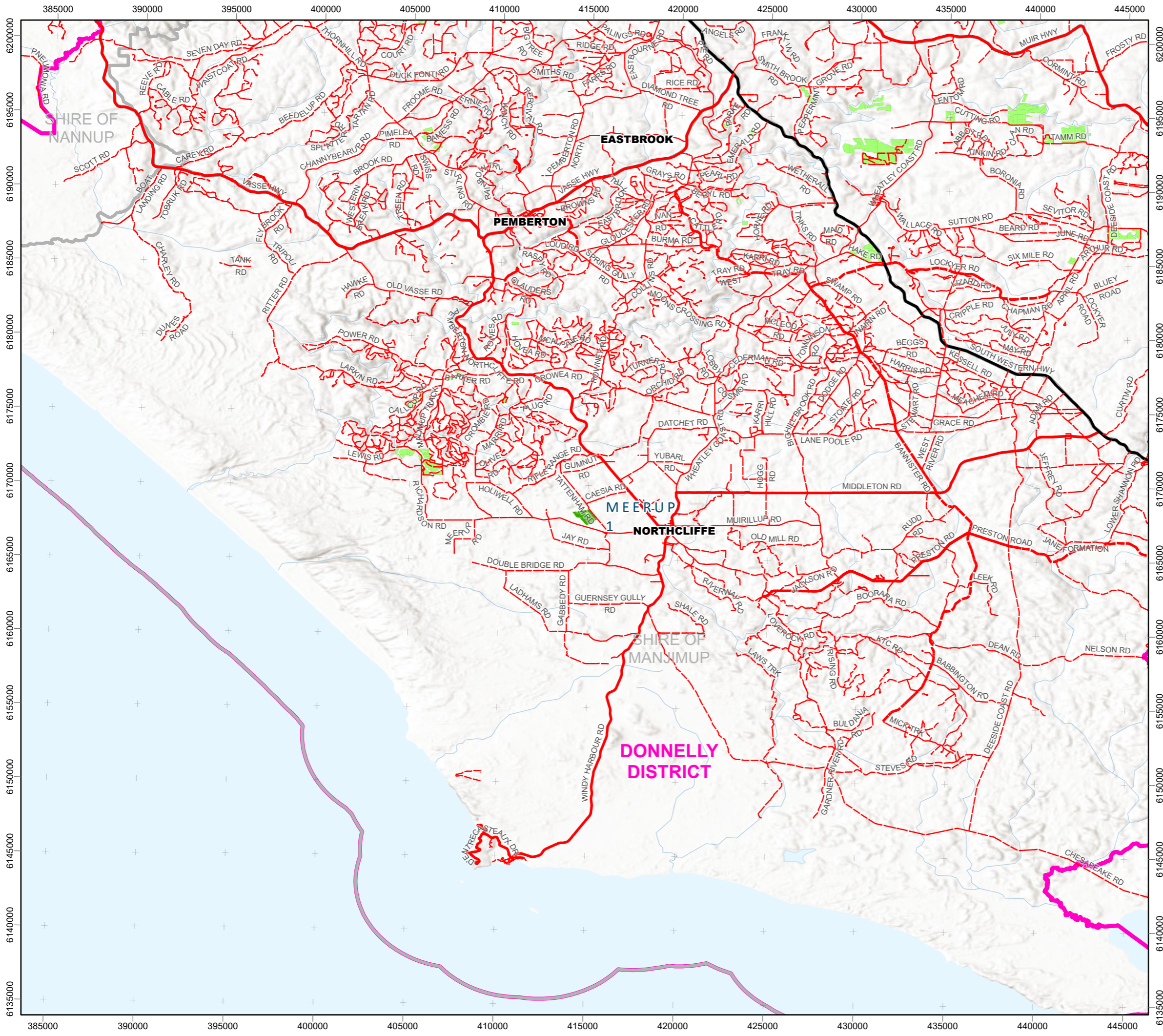


In case of emergency, Dial 000

Forest Products Commission Initial Fire Response Navigation Map

Meerup 1 Plantation

FPC Fire Duty Officer: 9725 5288



The Forest Products Commission does not guarantee that this map is without flaw of any kind and disclaims all liability for error, loss or other consequence which may arise from relying on any information depicted.

07 Nov 2025 02:29 PM

© 2025 Western Australian Land Information Authority



fpc Forest Products Commission

Leaflet | Map data © OpenStreetMap contributors, Imagery © Mapbox