

**Forest Products Commission
Initial Fire Response Map**

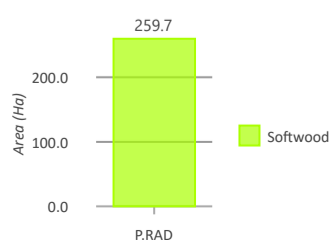
Mordalup 2 Plantation

Map 1 of 1

SHIRE OF MANJIMUP / SHIRE OF CRANBROOK

DBCA District: DONNELLY

FPC Fire Duty Officer: 9725 5288



- FPC Points of Interest**
- External Gate (Locked)
 - House
 - Shed
 - Other Infrastructure
 - No Access
 - Water Point
- FPC Lines of Interest**
- Access Track
 - Drain
 - Roads (LGATE-012)
 - Minor Road (Unsealed)
 - Track (Unsealed)
 - Other
 - Roads (LGATE-134)
 - Forestry Track (Unsealed)
 - Tenure (LGATE-226)
 - Tenure (LGATE-226)
- FPC Polygons of Interest**
- Sensitive Site
 - Water Points (LGATE-017)
 - Earth Dam
 - Water Courses (LGATE-018)
 - Minor River
 - Inland Flat (LGATE-099)
 - Subject to Inundation
 - Water Bodies (LGATE-016)
 - Swamp/Wetland
 - Local Government Authority (LGATE-233)
- Operational Fire Breaks**
- Fire Break (6m)
 - Fire Break (10m)
 - Fire Break (15m)
 - Fire Break (40m)
- Surrounding FPC Plantations**
- Softwood
 - FPC Plantations
 - Softwood
 - Cannister Maps Index - Portrait
 - DBCA District Boundaries (DBCA-023)

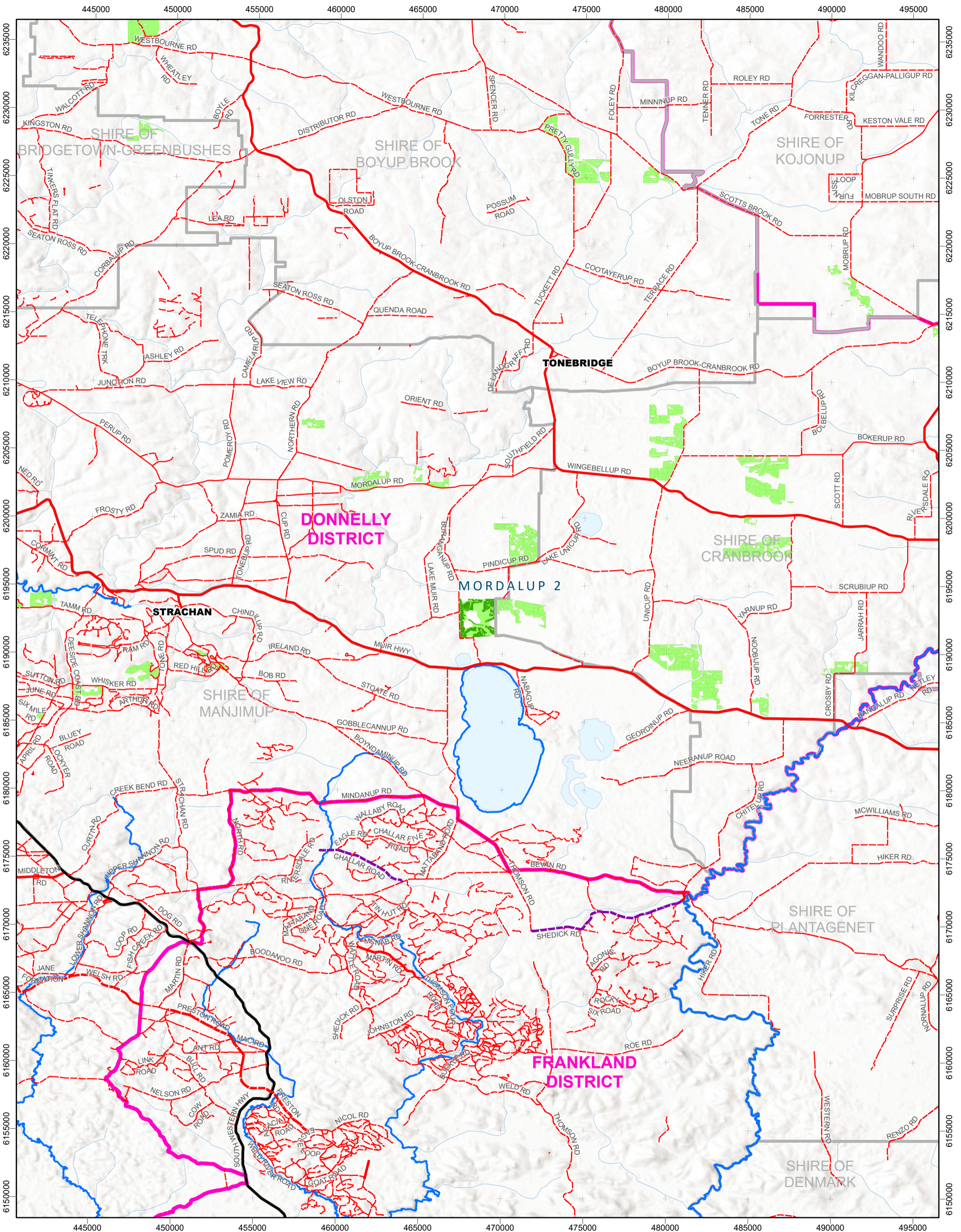
14 Nov 2025 02:50 PM

The Forest Products Commission does not guarantee that this map is without flaw of any kind and disclaims all liability for error, loss or other consequence which may arise from relying on any information depicted.

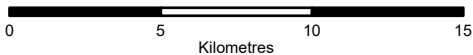
© 2025 Western Australian Land Information Authority



In case of emergency, Dial 000



Forest Products Commission
Initial Fire Response
Navigation Map
Mordalup 2 Plantation
FPC Fire Duty Officer: 9725 5288



14 Nov 2025 03:02 PM

The Forest Products Commission does not guarantee that this map is without flaw of any kind and disclaims all liability for error, loss or other consequence which may arise from relying on any information depicted.

© 2025 Western Australian Land Information Authority



fpc Forest Products Commission

Last map data by G2 Team 05/11/2025