

LEGEND

REGION SCHEME RESERVES (MRS)

- | | |
|------------------------|---------------------------------------|
| Primary Regional Roads | HS Public Purposes - High School |
| Other Regional Roads | P Public Purposes - Prison |
| Railways | PU Public Purposes - Public Utilities |
| Regional Open Space | SU Public Purposes - Special Uses |
| Waterways | Public Purposes - Tertiary Education |
| Water catchments | |

Other

- (Site No) Bush forever area

LOCAL SCHEME RESERVES

- | | |
|-------------------------|---------------------------|
| Car park | Primary distributor road |
| Cemetery | District distributor road |
| Education | Local distributor road |
| Infrastructure Services | Local road |
| Civic and community | Public open space |
| Drainage/waterway | |

LOCAL SCHEME ZONES

- | | |
|------------------------|----------------------------|
| Local centre | Private community purposes |
| District centre | Residential |
| Regional centre | Rural |
| General industry | Rural residential |
| Industrial development | Service commercial |
| Light industry | Special use |
| Mixed use | Urban development |

OTHER CATEGORIES

- (see scheme text for additional information)
- Scheme Boundary
- Local Government Boundary
- R Codes
- Additional uses
- Restricted uses
- Special use area
- Special Control Area - Perth Airport Buffer
- Special Control Area - Development Contribution Area
- Special Control Area - Martin Watercourse Catchment
- Special Control Area - Quarry Buffers
- Additional Site Requirements - Rural and Rural Residential

City of Gosnells

Local Planning Scheme No. 24
(District Scheme)



Department of Planning,
Lands and Heritage

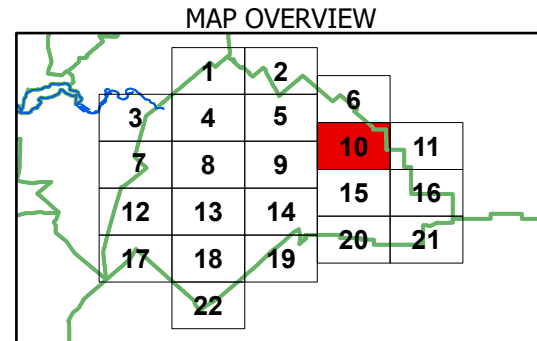
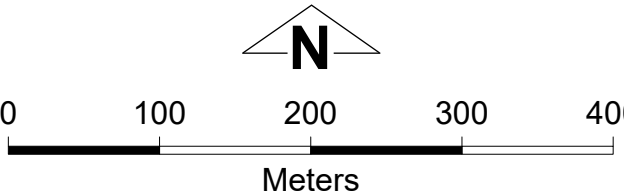


This electronic planning map has been prepared and made available for public inspection by the Western Australian Planning Commission pursuant to section 267B of the *Planning and Development Act 2005*. Whilst all care has been taken to accurately portray the original map, spatial data can be subject to modification over time. If you wish to use a copy of this map in any proceedings, a copy certified by the Commission (or its delegates) under section 267C is evidence of the contents of the electronic map or a part of the map. If you have questions about the publication or certification of a map, or suspect any omissions or errors in this electronic planning map, please advise the Department of Planning, Lands and Heritage at spatialdata@dph.wa.gov.au

© 2025 Western Australian Land Information Authority
Location information data licensed from Western Australian Land Information Authority (WALIA) trading as Landgate.
Copyright in the location information data remains with WALIA.
WALIA does not warrant the accuracy or completeness of the location information data or its suitability for any particular purpose.

Produced by Data Analytics,
Department of Planning, Lands and Heritage.

City of Gosnells
Local Planning Scheme No. 24
(District Scheme)



Authorised: T.Servaas

Plot Date: 11 December 2025

G.Gazette: Tuesday, 30 September 2025

Local Planning Scheme Map No. 10 of 22
MAP: Orange Grove Locality South