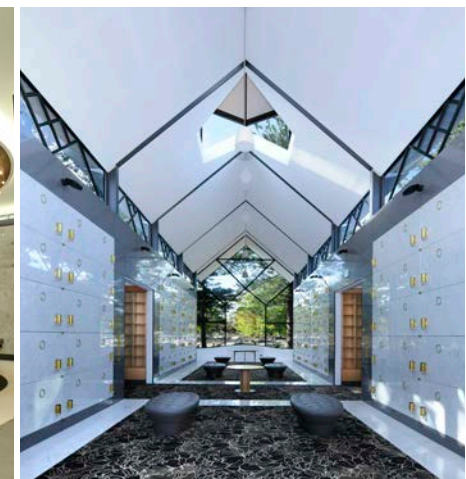
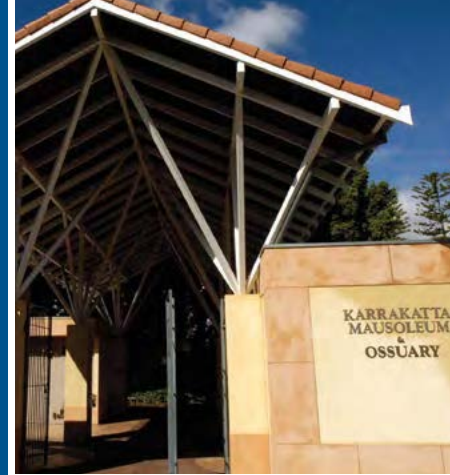


# MAUSOLEUMS & BURIAL VAULTS



METROPOLITAN  
CEMETERIES BOARD



## CONTENTS

About This Guide	1
Karrakatta All Saints Mausoleum	2
Swan Region Mausoleum	4
Midland Burial Vaults	5
Fremantle Mausoleum & Burial Vaults	6
Crypt Configurations	9
General Information	10
How to purchase a crypt	11

## OUR CEMETERY LOCATIONS:

### KARRAKATTA CEMETERY

Railway Road KARRAKATTA WA

### PINNAROO VALLEY MEMORIAL PARK

Whitfords Avenue PADBURY WA

### MIDLAND CEMETERY

Myles Road SWAN VIEW WA

### GUILDFORD CEMETERY

Kalamunda Road SOUTH GUILDFORD WA

### FREMANTLE CEMETERY

Carrington Street PALMYRA WA

### ROCKINGHAM REGIONAL MEMORIAL PARK

Baldivis Road BALDIVIS WA

Telephone: 1300 793 109

Email: [mcb@mcb.wa.gov.au](mailto:mcb@mcb.wa.gov.au)

[www.mcb.wa.gov.au](http://www.mcb.wa.gov.au)



# ABOUT THIS GUIDE

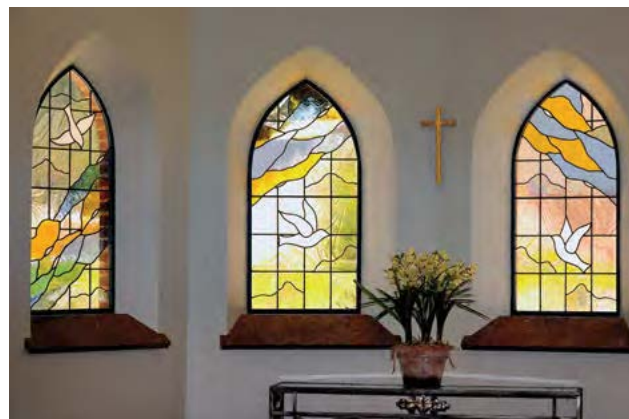
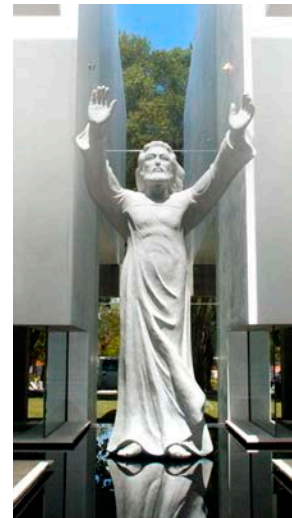
## THE MAUSOLEUM TRADITION

The tradition of ***above ground entombment*** in a mausoleum has existed for thousands of years. In many countries around the world, mausoleums are popular for their ability to commemorate and honour the dead in a place of dignified architectural elegance.

The Metropolitan Cemeteries Board (MCB) has built five beautiful public mausoleums, each with its own unique style and character, that allows the Western Australian community access to this distinguished form of final rest.

This booklet provides an introduction to our mausoleums. We invite you to visit our mausoleums in person any day of the week between 6:30am and 6:30pm.

Crypts at all mausoleums can be purchased at the time of bereavement (at-need) or can be purchased prior to bereavement (pre-need). To ensure a reservation in a preferred location, pre-purchasing is recommended. If you are interested in securing a crypt for the future, our Client Services staff will be pleased to show you the available options. Our contact details are on the inside front cover of this booklet.



## KARRAKATTA ALL SAINTS MAUSOLEUM

All Saints Mausoleum, *the second mausoleum* at Karrakatta, was opened in 2011.

A garden mausoleum, the building is located near the historic heart of Karrakatta Cemetery, just a short walk from Railway Road. The building features Mediterranean designs that have been crafted from quality materials sourced both locally and overseas.

A statue of Saint Jude, 'The Worker of Miracles', occupies a central position within the mausoleum and as, a point of focus, stands adjacent to a grand ficus tree.

Stage Two was opened in 2020 and incorporates design principles of firmitas (strength), utilitas (functionality) and venustas (beauty). St. Francis of Assisi is a focal theme throughout.

The Metropolitan Cemeteries Board (MCB) strongly advises that crypts within the All Saints Mausoleum are pre-purchased.





## KARRAKATTA ALL SAINTS MAUSOLEUM

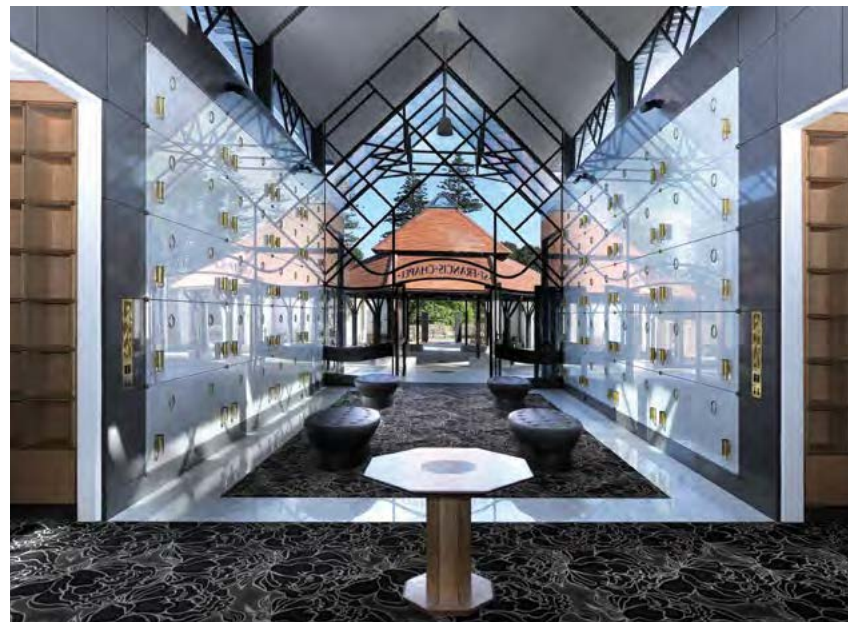
### CRYPT INFORMATION

External crypts are situated throughout serene landscaped terraces and arranged over five levels – Westminster (below ground), Prayer, Heart, Eye and Heaven. Crypt shutters are finished with the finest of granites.

The Chapel of Saint Jude and St. Francis Chapel provide internal crypts for those seeking a timelessly elegant environment in which to lay a loved one to rest. To ensure consistency within the chapel, the purchase price is inclusive of fixtures including vases, photo frames and vigil lights.

For those to whom privacy and seclusion is a consideration, several family rooms have also been incorporated.

The mausoleum offers a wide variety of crypt configurations. These are outlined on page 9 of this guide.



## SWAN REGION MAUSOLEUM

Swan Region Mausoleum at Guildford Cemetery has an open-air, **Mediterranean garden crypt design** similar to that of Karrakatta Mausoleum.

Visitors to the mausoleum enter through a sheltered pergola leading to the main courtyard, where traditional paving, garden plantings and a row of elegant standard roses complement the natural granite crypt fronts. A life sized bronze statue of St Anthony and mosaic fascia panels have been incorporated as a reference to important periods in Christian life.

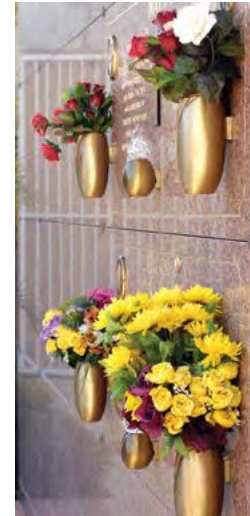
Swan Region Mausoleum offers a welcoming uplifting environment, providing dignified repose to the deceased and a place of comfort and peace to the living. The Mausoleum is open from 6.30am to 6.30pm each day. The facility is securely sealed each evening.

### CRYPT INFORMATION

168 Crypts arranged on four levels – Prayer, Heart, Eye and Heaven.

Crypt type, tandem (family two), double and capella (undercover) feature crypts are available.

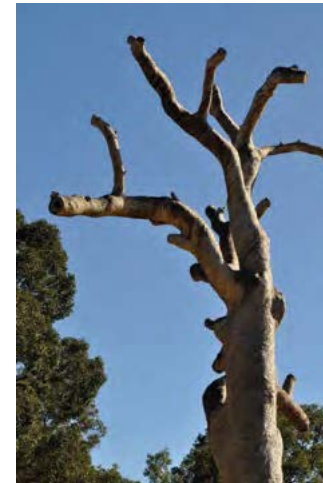
See page 9 for more detail on crypt configuration.





## MIDLAND BURIAL VAULTS

Located in the Swan Valley within the **historic Midland Cemetery**, offers a range of burial vaults for families.





## FREMANTLE MAUSOLEUM & BURIAL VAULTS

Winner of Western Australia's *highest architectural accolades*, the beautiful design of the Fremantle Mausoleum makes it a worthy place for eternal rest.

The building evokes a strong sense of spiritual ambience and the chapels have been imbued with a sense of piety and the eternal. Designed to offer a wide range of crypt styles, locations and options, the mausoleum makes the tradition of above ground entombment readily accessible for those seeking a dignified mausoleum for the repose of a loved one.





## FREMANTLE MAUSOLEUM & BURIAL VAULTS

The mausoleum offers three distinctly different crypt areas, each with its own special character – the Chapel areas, the Terraces, and the Garden Crypts. A range of family rooms and locations for the establishment of cremation memorials are also available.

The building and formally landscaped surrounds have a dignified and restful ambience for reflection and contemplation. The use of the finest granites and polished stone has ensured that the finished mausoleum carries an air of contemporary elegance.

The seven statues within the facility are carved from individual blocks of granite and are based on traditional designs. Immediately prominent, the statue of Jesus, is complemented by statues of the Madonna Immaculata, St Peter and four Guardian Angels.



## FREMANTLE MAUSOLEUM & BURIAL VAULTS

Inscriptions and fixtures on crypts within the Terraces are by client selection.

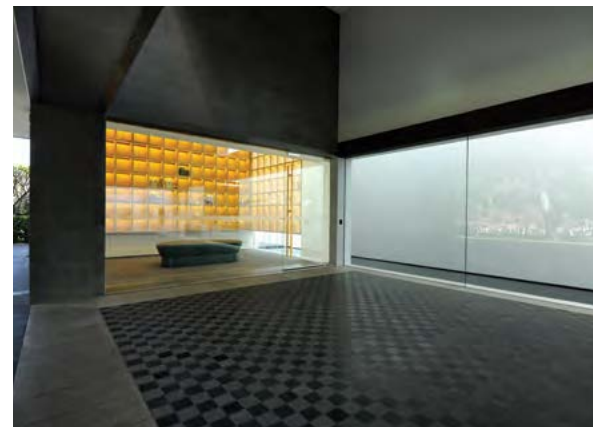
To ensure consistency in appearance, crypts within the internal chapels are inclusive of fixtures including vases, photo frames, vigil lights and insignia.

For further details on crypt configurations, please refer to page 9 of this document.

To ensure securing of a preferred location, pre-purchasing of crypts is strongly advised.

### BURIAL VAULTS

For those seeking below ground entombment, a number of burial vaults have been made available at Fremantle Cemetery.



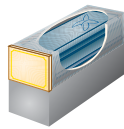
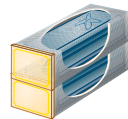


# CRYPT CONFIGURATIONS

## INFORMATION FOR PROSPECTIVE PURCHASERS

All crypt types are subject to availability.

Picture	Capacity	Crypt Name	Description	Karrakatta	Swan Region	Fremantle
	1	Single Crypt	Accommodates one casket. Offers a single fascia panel for inscription.	✓	✓	✓
	2	Companion Crypt	Accommodates two caskets side-by-side. Offers a double sized fascia panel for inscription.	✓	✓	✓
	2	Family Two or Tandem Crypt	Accommodates two caskets placed end-to-end. Offers a single fascia panel for inscription.	✓	✓	✓
	2	Couch-Companion Crypt	Accommodates two caskets placed side by side. Offers an extra large fascia panel for inscription.	✓		
	2	Slide Over Crypt	Occupies a feature or corner position and accommodates two caskets. Offers a single fascia panel for inscription.	✓	✓	

Picture	Capacity	Crypt Name	Description	Karrakatta	Swan Region	Fremantle
	2	Westminster Crypt	Occupies a ground level position and accommodates two caskets. The first casket is located below ground level. Offers a single fascia panel for inscription.	✓		
	2	Bunk	Accommodates two caskets with one on top of the other. Provides a single panel for inscription.	✓		
	3+	Family Room	For a family's exclusive use. Can be purchased for future generations.	✓		✓

*Not all crypt configurations are available in all areas.  
Please contact our Client Services staff for more information.*

## GENERAL INFORMATION

### CERTIFICATE OF ENTITLEMENT

Each crypt or ossuary compartment is sold with a certificate of entitlement. This provides you with exclusive entitlements to the crypt.

### GRANT OF RIGHT OF ENTOMBMENT

The Grant of Right of Entombment is granted for a period of 25 years and can be extended to 50 years on application. The 25-year tenure will commence upon purchase of the Grant of Right of Entombment.

### PRE-NEED PURCHASES

Crypts may be purchased prior to the time of need and will be reserved by the Metropolitan Cemeteries Board until required. Pre purchasing gives your family peace of mind, knowing that your crypt is available for the future in a safe and secure facility. The entombment fees may be pre-paid or otherwise the fee will be payable at the time of entombment.

### INSCRIPTIONS

Monumental Masons carry out the inscription work according to the family's instructions. The Metropolitan Cemeteries Board will be pleased to provide a list of the licensed Monumental Masons. The Metropolitan Cemeteries Board installs lettering in chapel facilities.

### PERSONALISED TRIBUTES

Tributes such as vases, framed photos, and eternal lamps may be placed on crypt and ossuary compartments. The Application for Certificate of Entitlement provides full details of tributes that may be used. Electricity is supplied to each crypt for the illumination of vigil lights if desired.

### SECURITY

Mausoleums are open from 6:30am to 6:30pm daily.

### EXHUMATION

Some families choose to exhume a loved ones remains from a burial site for entombment in a mausoleum crypt or ossuary.

All Board regulations regarding the mausoleums are detailed on the Application for Certificate of Entitlement.





## HOW TO PURCHASE A CRYPT

Our Client Services staff will be pleased to assist you in selecting the crypt of your choice. If you are undecided about your choice, the Metropolitan Cemeteries Board can hold a crypt for up to one month whilst you make a decision.

When you purchase a crypt you will receive a Certificate of Entitlement; you will also need to purchase a Grant of Right of Entombment, which gives you the right to be interred in the crypt for a period of 25 years. This period can be extended to a 50 year tenure.

### **PURCHASING A CRYPT AT NEED**

If you are purchasing a crypt at need you will need to pay for the crypt and the Grant of Right of Entombment. The Grant of Right of Entombment is payable via your Funeral Director.

### **PURCHASING A CRYPT PRE-NEED**

If you purchase a crypt pre-need (prior to bereavement) you have two options.

The first option is to purchase the crypt and the Grant of Right of Entombment at the same time. In this option the tenure of the grant will begin on the date of purchase, the benefit of this option is that you will avoid paying the annual cost increases that are applied to the Grant of Right of Entombment.

The second option is to purchase the crypt and not to pay for the Grant of Right of Entombment until the crypt is needed. The benefit of this option is that you will be interred for the maximum tenure of the grant.

### **WHAT HAPPENS AFTER THE GRANT OF RIGHT OF ENTOMBMENT EXPIRES?**

A Grant of Right of Entombment can be extended to a maximum of 50 years. Once the grant expires, the right of entombment returns to the Metropolitan Cemeteries Board.









Railway Road Karrakatta  
PO Box 53 Claremont WA 6910

Karrakatta | Pinnaroo | Fremantle | Midland | Guildford | Rockingham | Gnangara Aboriginal Cemetery

Telephone: 1300 793 109

Email: [mcb@mcb.wa.gov.au](mailto:mcb@mcb.wa.gov.au)

Website: [www.mcb.wa.gov.au](http://www.mcb.wa.gov.au)



METROPOLITAN  
CEMETERIES BOARD

