

# South West

## Rainfall, streamflow and groundwater

### Rainfall

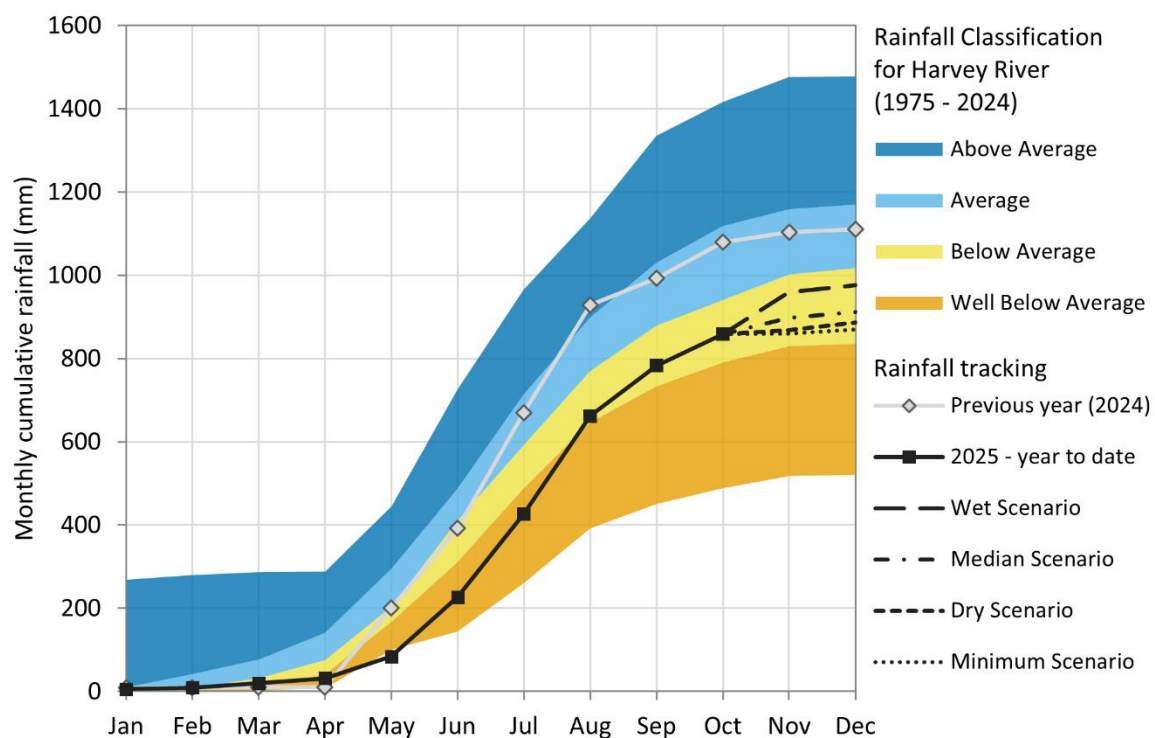
#### Harvey River, Pemberton

The graph shows how the total amount of rainfall, or streamflow in a particular place compares to previous years – specifically, to the period from 1975 to last year. The graph also shows the potential rainfall or streamflow for the rest of the year based on a wet, median and dry scenario.

#### Harvey River

Rainfall in Harvey is currently tracking in the below average category and is lower than last year.

Harvey River rainfall scenarios - October 2025



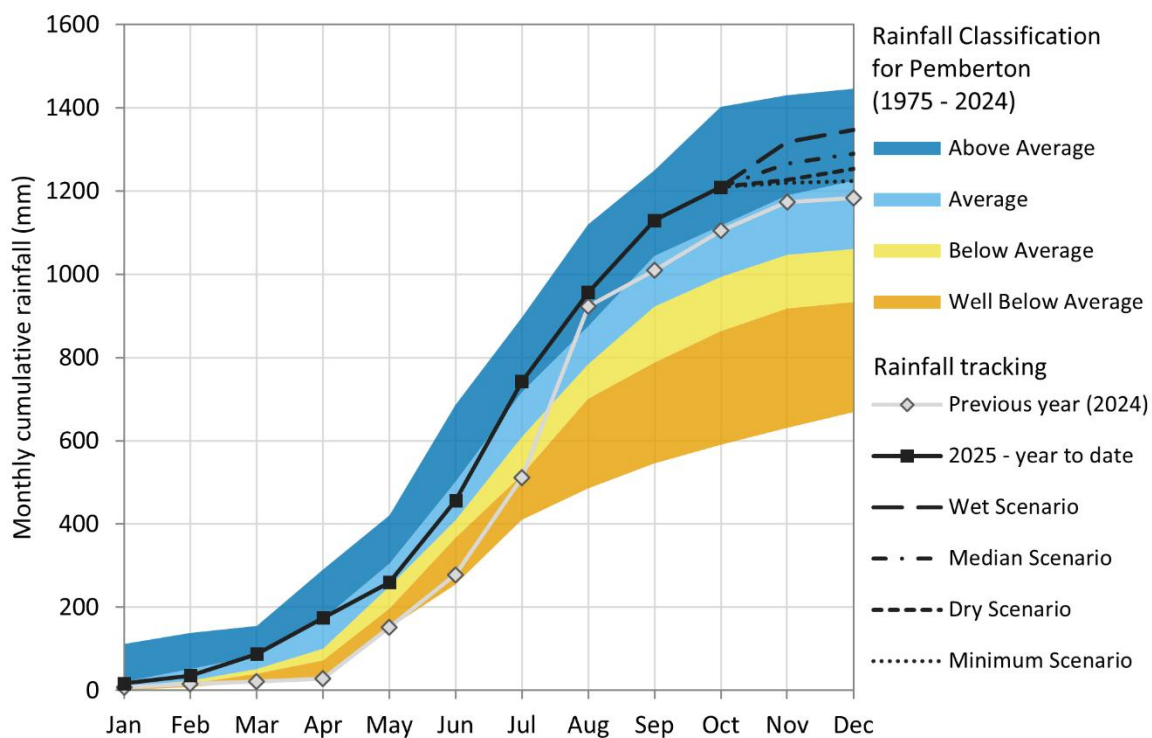
Government of Western Australia  
Department of Water and Environmental Regulation

Product of the Department of Water and Environmental Regulation

## Pemberton

Rainfall in Pemberton is tracking in the above average category, higher than last year.

### Pemberton rainfall scenarios - October 2025



Government of Western Australia  
Department of Water and Environmental Regulation

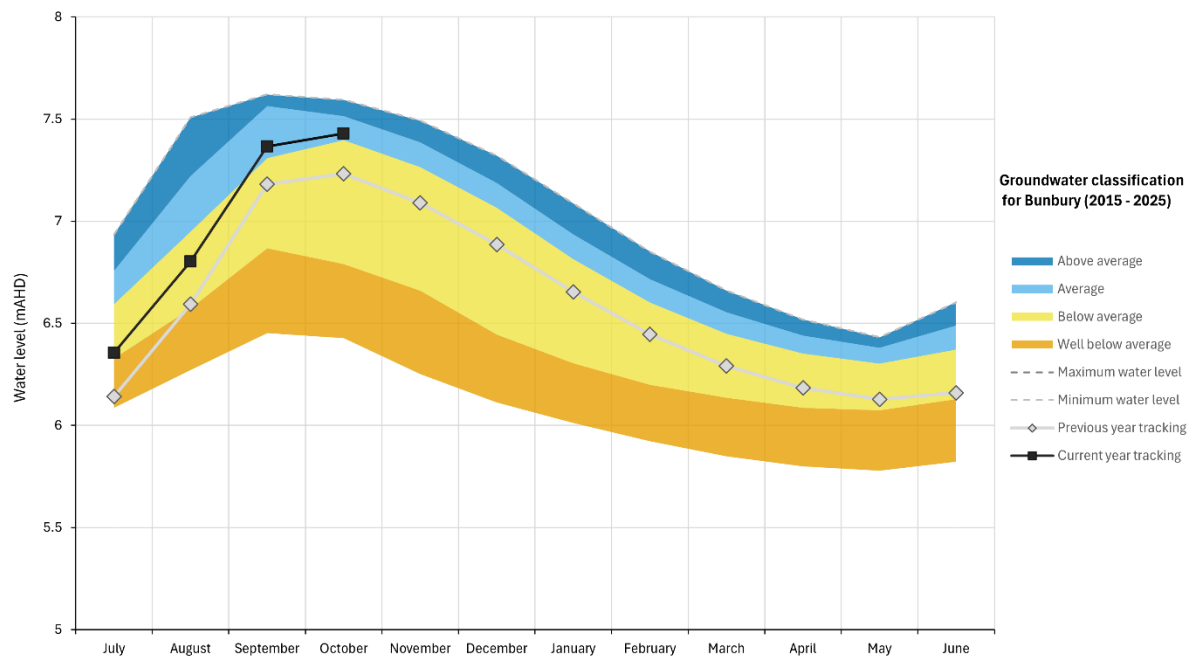
Product of the Department of Water and Environmental Regulation

# Groundwater

## Bunbury

Groundwater levels at the representative bore in Bunbury are tracking on average and are higher than groundwater levels recorded in the previous year.

Bunbury groundwater tracking - October 2025

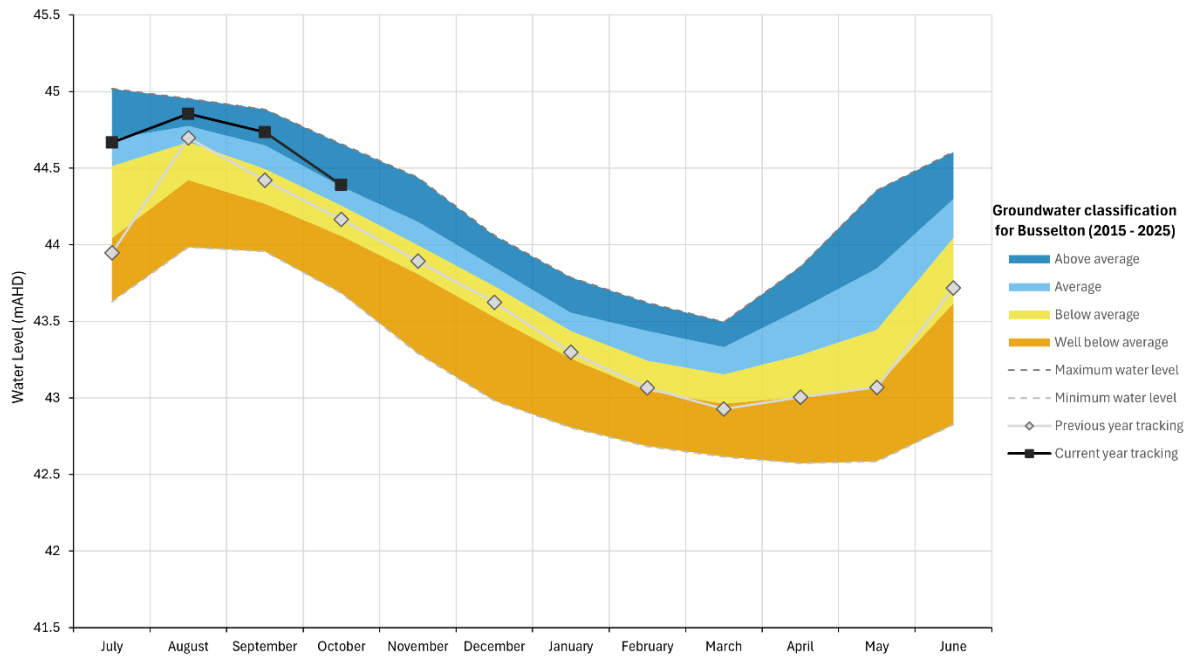


Product of the Department of Water and Environmental Regulation

## Busselton

Groundwater levels at the representative bore in Busselton are tracking above average and are higher than groundwater levels recorded in the previous year.

**Busselton groundwater tracking - October 2025**

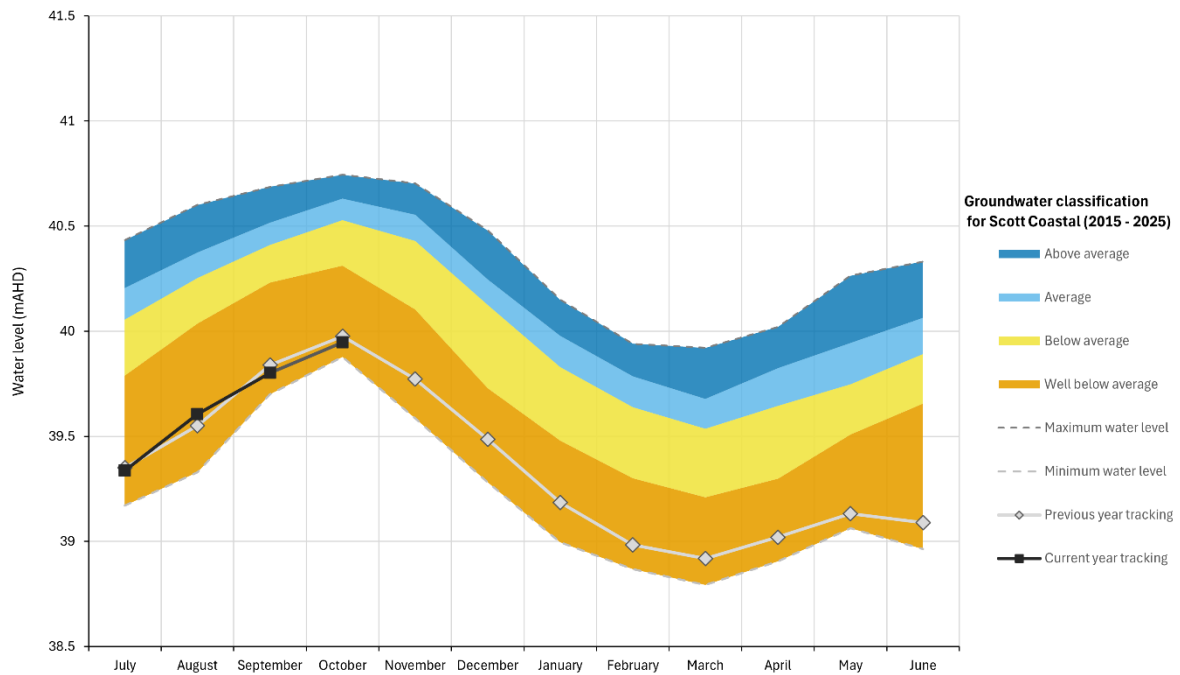


Product of the Department of Water and Environmental Regulation

## Scott Coastal

Groundwater levels at the representative bore in Scott Coastal are tracking well below average and are slightly lower than groundwater levels recorded in the previous year.

Scott Coastal groundwater tracking - October 2025



Product of the Department of Water and Environmental Regulation

## Streamflow

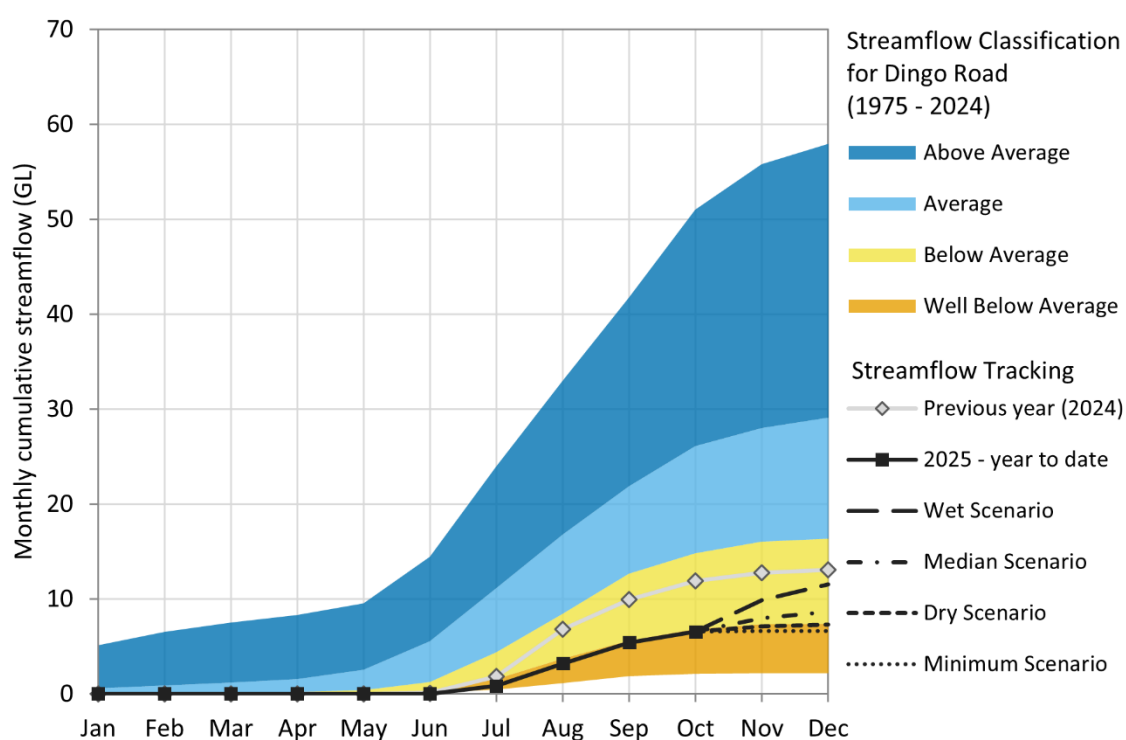
### Harvey River, Pemberton (Lefroy Brook)

The graph shows how the total amount of rainfall, or streamflow in a particular place compares to previous years – specifically, to the period from 1975 to last year. The graph also shows the potential rainfall or streamflow for the rest of the year based on a wet, median and dry scenario.

#### Harvey River

Streamflow in Harvey River, east of Harvey is tracking in the well below average category.

#### Harvey River streamflow scenarios - October 2025



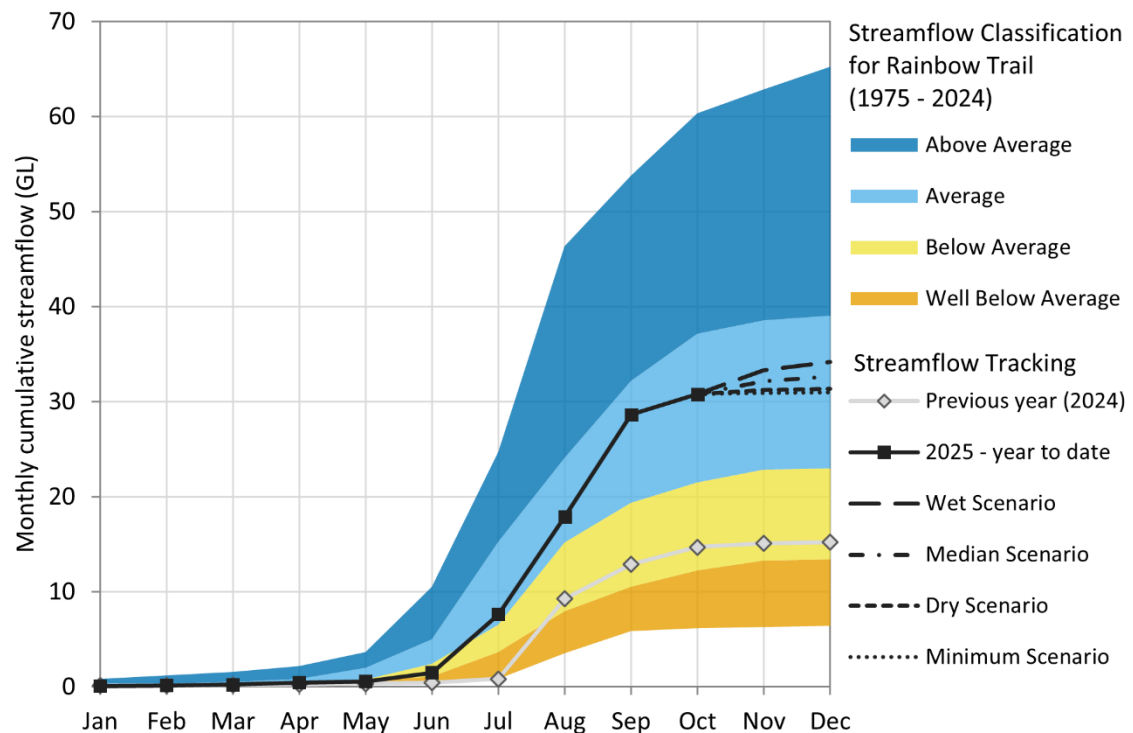
Government of Western Australia  
Department of Water and Environmental Regulation

Product of the Department of Water and Environmental Regulation

## Pemberton (Lefroy Brook)

Streamflow in Lefroy Brook, near Pemberton is tracking in the average category.

### Lefroy Brook streamflow scenarios - October 2025



Government of Western Australia  
Department of Water and Environmental Regulation

Product of the Department of Water and Environmental Regulation