



Government of **Western Australia**  
Department of **Water and Environmental Regulation**



# Shire of Lake Grace

non-potable strategic community  
water supplies plan

Department of Water and Environmental Regulation  
Prime House, 8 Davidson Terrace  
Joondalup Western Australia 6027  
Locked Bag 10 Joondalup DC WA 6919

Phone: 08 6364 7000

Fax: 08 6364 7001

National Relay Service 13 36 77

[wa.gov.au/dwer](http://wa.gov.au/dwer)

© Government of Western Australia 2025

This work is copyright. You may download, display, print and reproduce this material in unaltered form only (retaining this notice) for your personal, non-commercial use or use within your organisation.

Apart from any use as permitted under the *Copyright Act 1968*, all other rights are reserved. Requests and inquiries concerning reproduction and rights should be addressed to the Department of Water and Environmental Regulation.

### **Acknowledgements**

The development of this strategic community water supply plan has involved several people from the Rural Water Planning section in the Department of Water and Environment Regulation:

Sherrie Anderson, Rosie Bell, Tracy Calvert, Mell Culhane, Elizabeth Tanner, Sandy Turton-Parkinson and Renae Thorpe.

The department would also like to thank the Shire of Lake Grace and the Water Corporation for their advice, support and assistance during the preparation of this plan.

For more information about this plan, contact Rural Water Planning, 1800 780 300.

Cover photograph: Dingo Rock Dam and Weir drone photo, Shire of Lake Grace.

### **Disclaimer**

This document has been published by the Department of Water and Environmental Regulation. Any representation, statement, opinion or advice expressed or implied in this publication is made in good faith and on the basis that the Department of Water and Environmental Regulation and its employees are not liable for any damage or loss whatsoever which may occur as a result of action taken or not taken, as the case may be in respect of any representation, statement, opinion or advice referred to herein. Professional advice should be obtained before applying the information contained in this document to particular circumstances.

This publication is available at our website [wa.gov.au/dwer](http://wa.gov.au/dwer) or for those with special needs it can be made available in alternative formats such as audio, large print, or Braille.

# Contents

Summary .....	1
Introduction.....	2
Strategic community water supplies and agricultural area dams .....	3
Shire of Lake Grace map.....	4
Strategic community water supply access .....	5
Overview of different fill points .....	5
Swipe card systems.....	5
Farm bots.....	5
Shire of Lake Grace SCWS sites.....	6
Description of community water supplies .....	8
14 Mile dam .....	8
14 Mile dam site description.....	8
Ardler Road/Kennedy's dam .....	10
Ardler Road/Kennedy's dam site description .....	11
Lake King standpipe .....	12
Lake King standpipe site description.....	12
Burngup Railway dam .....	15
Burngup Railway dam site description .....	16
Dingo Rock .....	17
Dingo Rock site description.....	19
Dunn Rock dam .....	20
Dunn Rock dam site description.....	20
Lake Biddy twin dams/Lake Biddy No.1 .....	22
Lake Biddy twin dams site description .....	23
Lake Grace town .....	24
Lake Grace town site description .....	24
Marchetti's tank .....	26
Marchetti's tank site description .....	27
Mt Madden bore .....	28
Mt Madden bore site description .....	29
Mt Madden dam.....	30
Mt Madden dam site description .....	31
Mt Madden CBH tank .....	32
Mt Madden CBH tank site description.....	33
Pallarup Rock tank .....	34
Pallarup Rock tank site description .....	35
South-East Newdegate – Cuffy's (AA Dam # 563) .....	36
South-East Newdegate – Cuffy's site description .....	37
South-East Newdegate – Newman's .....	38
South-East Newdegate – Newman's site description .....	38
Sugg Rock .....	40
Sugg Rock site description .....	41
Tommy's dam .....	42

Tommy's dam site description.....	43
Varley North community dam .....	44
Varley North community dam site description.....	45
Varley Pipehead dam .....	46
Varley Pipehead dam site description.....	47
Lake Magenta dam.....	48
Lake Magenta dam site description .....	48
Lake Grace north dam.....	50
Lake Grace north dam site description .....	50
Appendices.....	52
Burngup Railway dam survey.....	52
14 Mile dam survey .....	53
Dunn Rock dam surveys .....	54
Lake Biddy dam A & B survey.....	55
Magenta North/Ardler Road dam survey.....	56
South East Newdegate Cuffy's dam survey.....	57
Sugg Rock dam survey .....	58
Tommy's dam survey .....	59
Varley North community dam survey .....	60
Glossary .....	61



## Summary

Water supply planning is essential in rural areas and requires collaboration, involvement and participation from all stakeholders, including farmland communities, local government authorities (LGAs) and State Government agencies as part of an integrated approach to sustainable water supply for the future.

This plan provides information for the Shire and farmers on the location of strategic community water supplies. It advises how to access non-potable water for emergency stock watering and firefighting purposes, including the facilities available at each site.

# Introduction

Over the past 40 years, recurrent water supply problems have affected the dryland agricultural region. Emerging climate changes are likely to increase the occurrences of low rainfall years, resulting in water shortages and restrictions in rural communities.

As farmers face long-term water security challenges, they are encouraged to proactively develop and maintain on-farm water infrastructure to better prepare for dry periods.

Rural water planning recognises the importance of preparing for these events to increase the opportunities for delivering an assured water supply to farmland communities in the dryland agricultural areas of Western Australia (WA).

Strategic community water supply (SCWS) planning is one of the key roles of the Department of Water and Environmental Regulation's rural water program. The aim is to safeguard dryland agricultural areas wherever possible against serious water deficiencies.

While landholder self-sufficiency must remain the primary objective, the rural water program recognises the importance of emergency off-farm water supplies to farming communities. It also builds on the SCWS network across the dryland agricultural area through the Community Water Supplies Partnership (CWSP) program and the Agricultural Areas (AA) dam works program.

Both programs establish and improve non-potable water supplies to ensure that water is available for emergency livestock watering, firefighting and other farm needs. The CWSP program aims to reduce reliance on potable scheme water supplies for non-potable needs, and to increase water availability for public amenities such as sportsgrounds.

This plan has been compiled for the Shire of Lake Grace to provide a clear description of each of the SCWS in the shire available for firefighting purposes, and to farmers and farming communities in times of emergency.

## Strategic community water supplies and agricultural area dams

A network of SCWS has been developed across WA's dryland agricultural areas to provide an important source of non-potable water for farming and firefighting needs.

These supplies are for emergency use in times when low rainfall causes on-farm supplies to become depleted and farmers need to travel to access water for livestock and essential farming purposes.

Vesting of the strategic dams and bores in each LGA varies, with some sites owned by government agencies (including the department), Water Corporation, the LGA itself, or by private entities where an agreement has been made to allow access.

It is important that these water supplies are carefully managed to ensure water is available during times of emergency.

The department keeps in regular contact with rural communities to monitor the condition of SCWS and identify and address any maintenance issues.

Each year, the department's rural water program manages work to maintain and upgrade sites vested with it, and sites in priority areas vulnerable to dry conditions.

AA dams have been developed since the early 1990s to provide water and support the growth of farming in the dryland agricultural area. There are about 480 of the original 681 AA dams that range from high value to no value in terms of their condition and serviceability.

SCWS is a subset of the AA dams that are reliable, in good to excellent repair and retain a high value. The department uses LGA maps to determine which sites are worth upgrading and to identify priority areas to develop new SCWS.

The following map (Figure 1) shows the location of the strategic community supplies and AA dams in the Shire of Lake Grace, with symbols indicating the capacity, vesting and values of each site.

Shire of Lake Grace map

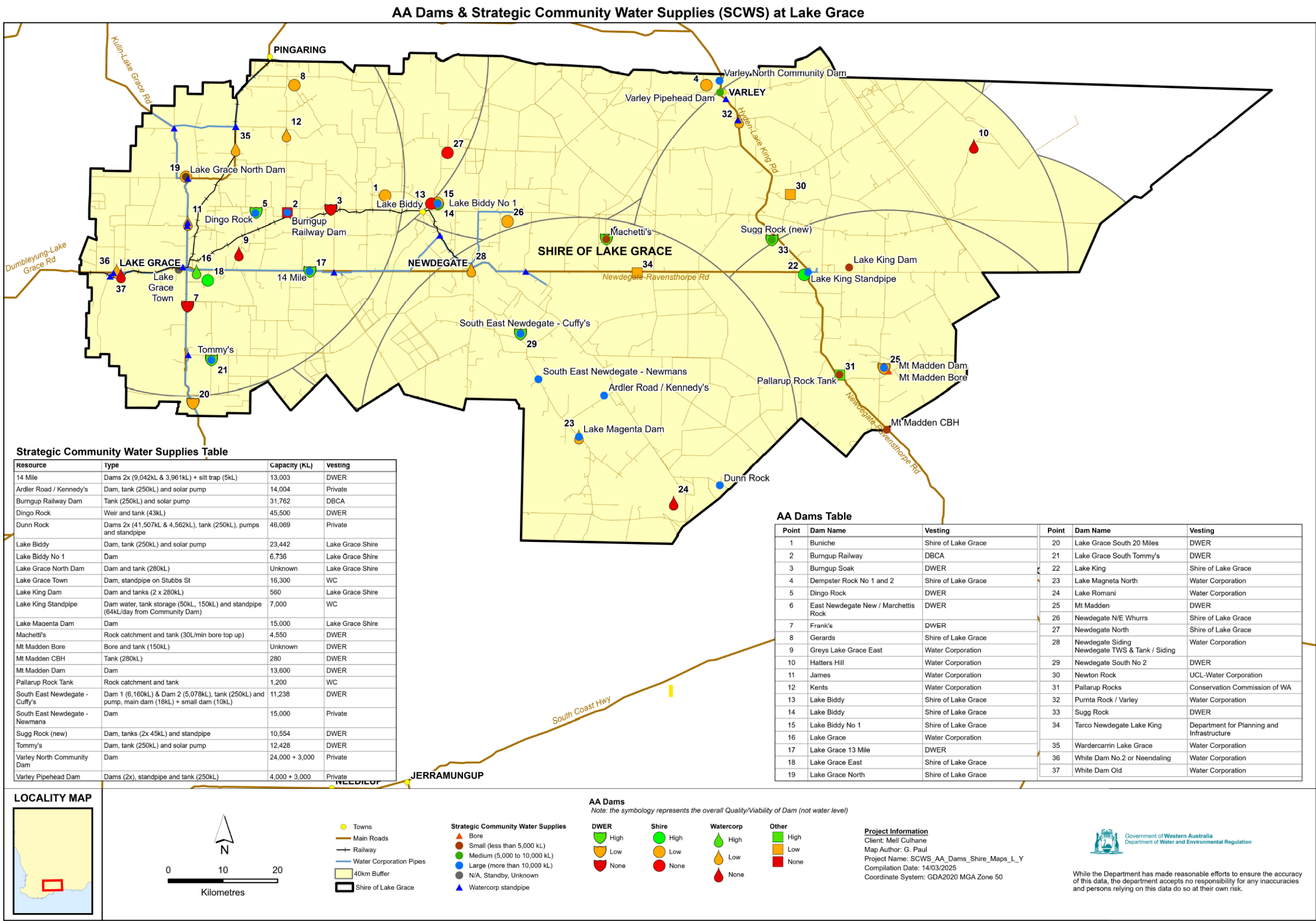


Figure 1 - Location of strategic community water supplies (at 14 March 2025)

# Strategic community water supply access

## Overview of different fill points

Each SCWS will have a fill point to allow access to water supply for agricultural purposes. Each fill point will have a camlock fitting. Standard sizes of camlocks include 50 mm (2 inch), 80 mm (3 inch) fitting and in some cases a 100 mm (4 inch) connection is fitted for firefighting purposes. These camlock fittings will be available where there is a tank, standpipe, swipe card system or bore fill point. When accessing water directly from dams without tank storage, you will need to bring your own pump to extract water.

## Swipe card systems

Swipe card systems are metered fill points that require a swipe card or fob from your LGA to access the water supply. Contact your local LGA office to obtain a swipe card to access these water supplies.

During emergencies such as bushfires the Shire can switch the swipe card system to allow access without a swipe card. All local fire appliances have swipe card access. The emergency access contact is the Manager Infrastructure Services on 0448 089 092 / (08) 9890 2500.

## Farm bots

Some tanks are fitted with farm bots, which regularly record the water level and feed this information into a website. You can access this website at [app.farmbot.com.au](http://app.farmbot.com.au) (Login ID: **public.access** Password: **access1**) to view water tank levels for tanks fitted with farm bots.

Below are examples of different fill points you may come across in the shire.



*Tank standard camlock fitting*



*Farm bot positioned on top of tank*



*Swipe card standpipe system*



*Tank, electric swipe card and pump for bore*

## Shire of Lake Grace SCWS sites

Site name	Location
14 Mile dam	Lake Grace – Newdegate Road <i>~750 m west of 14 Mile Road</i>
Ardler Road/Kennedy's dam	Ardler Road <i>~2.3 km south of Old Ravensthorpe Road</i>
Lake King standpipe	Newdegate – Ravensthorpe Road <i>junction of Lake-King Norseman Road</i>
Burngup Railway dam	Burngup Road North <i>~900 m from Biddy Camm Road</i>
Dingo Rock	Dam - West of Duckworth Road; Tanks - Biddy Camm Road between Duckworth Road & Beenong North roads
Dunn Rock	Taylor Road <i>~1 km west of Dunn Rock CBH</i>
Lake Biddy Twin Dams / Lake Biddy No.1	<i>~1.4 km along Witham Road (off Biddy Camm Road), turn east on dirt road for ~1.4 km to Lake Biddy dam</i>
Lake Grace town	Stubbs Street <i>~400 m from Griffin Street.</i>
Marchetti's tank	Haigh Road <i>~5.2 km from Newdegate – Ravensthorpe Road</i>
Mt Madden bore	Hatter Hill Road or Muncaster Road
Mt Madden dam	Hatter Hill Road or Muncaster Road access
Mt Madden CBH tank	Cnr Newdegate – Ravensthorpe Road & Fitzgerald Road
Pallarup Rock tank	Newdegate – Ravensthorpe Road <i>~1.2km from Old Newdegate Road</i>



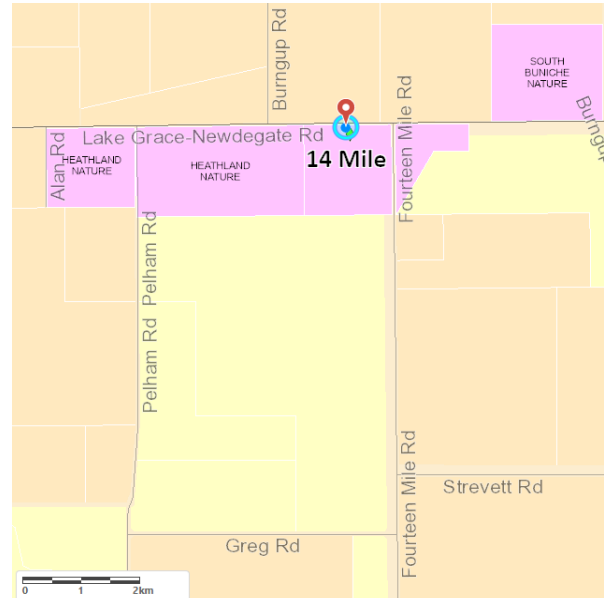
South-East Newdegate – Cuffy’s	Parsons Road <i>~700 m from Magenta Road</i>
South-East Newdegate – Newman’s	Magenta Road <i>~4.5 km south of Grant Road</i>
Sugg Rock	Sugg Rock Road off Hyden-Lake King Road
Tommy’s dam	Tommy’s Dam Road off Mallee Hill Road
Varley North community dam	Hyden-Lake King Road <i>~2.2 km from Varley South Road</i>
Varley Pipehead dams	Corner of Hyden-Lake King Road & Varley South Road
Lake Magenta dam	Magenta Road <i>~3.44 km north of Giles Road</i>
Lake Grace North dam	Kulin – Lake Grace Road <i>~550m west of Eggers Road</i>

# Description of community water supplies

## 14 Mile dam



*Aerial of 14 Mile dam pre-works.*



*Location map*



*14 Mile main dam (Dec 2021)*



*14 Mile silt trap dam (Dec 2021)*



*Gauges at 14 Mile main dam (Dec 2021)*



*14 Mile catchment (Dec 2021)*

## 14 Mile dam site description

Vesting	Department of Water and Environmental Regulation
Purpose	Strategic community water supply for emergency stock water and fire fighting
Associated reserve	17648
Catchment type	Earth
Catchment area (ha)	7.21 ha

### Location and coordinates

#### Location: Lake Grace–Newdegate Road ~750 m west of 14 Mile Road

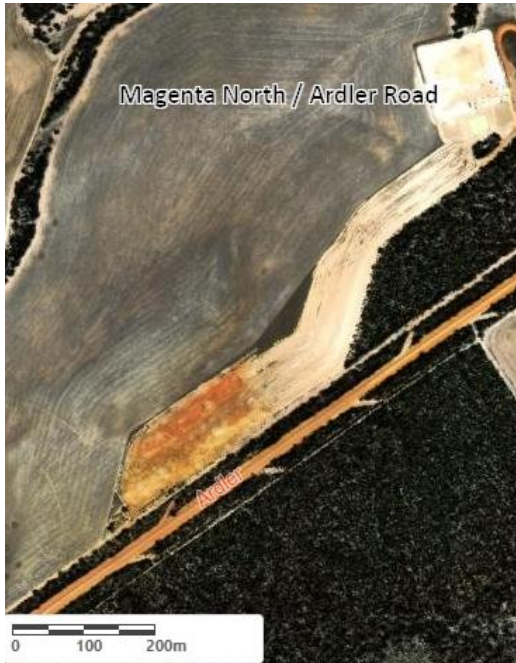
Latitude	-33.103155203
Longitude	118.710478167
Eastings	659609.187267
Northings	6335975.763750

### Water supply and access

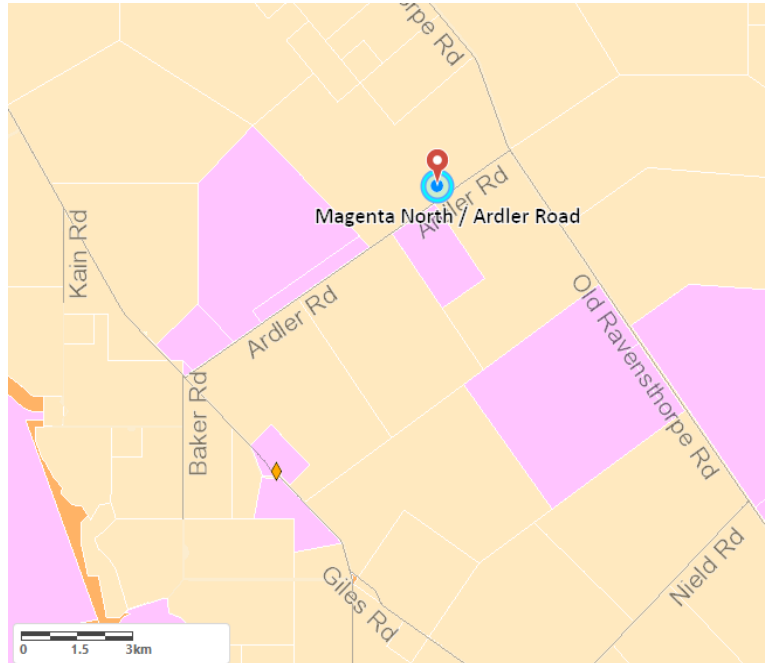
Structure type	2 x dams
Capacity	Dams 9,042kL, silt trap dam 3,961kL
Tank storage	No
Standpipe Y/N	No
Pump available Y/N	No
Heavy vehicle access	Yes, tight turn around
Turnaround area	Yes
Emergency access contacts	Manager Infrastructure Services 0448 089 092 / 9890 2500

# Description of community water supplies

## Ardler Road/Kennedy's dam



*Aerial view of Ardler Road*



*Location map*



*Ardler Road Dam*



*Dam gauge makers*



*Silt dam*



*250 kL tank*



*4" (100 mm) and 2" (50 mm) outlets*



## Ardler Road/Kennedy's dam site description

Vesting	Private
Purpose	Strategic community water supply for emergency stock water and fire fighting
Associated reserve	Private land
Catchment type	Earth
Catchment area (ha)	5 ha

### Location and coordinates

#### Location: Ardler Road ~2.3 km south of Old Ravensthorpe Road

Latitude	-33.298574178
Longitude	119.292261016
Eastings	713432.122782
Northings	6313267.610540

### Water supply and access

Structure type	Dam and tank
Capacity	Dam 1: 14,004kL, silt dam 2: 791kL
Tank storage	250kL
Camlock coupling sizes	3" (75 mm) and 2" (50 mm)
Standpipe Y/N	No
Farm bot Y/N	Yes
Pump available Y/N	No
Heavy vehicle access	Yes
Turnaround area	Yes
Emergency access contacts	Manager Infrastructure Services 0448 089 092 / 9890 2500

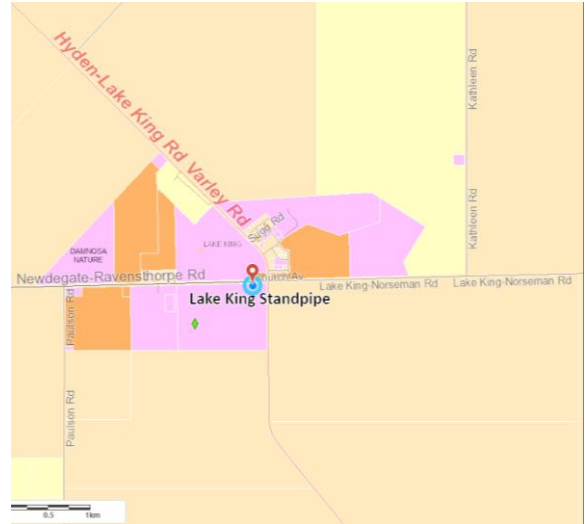


# Description of community water supplies

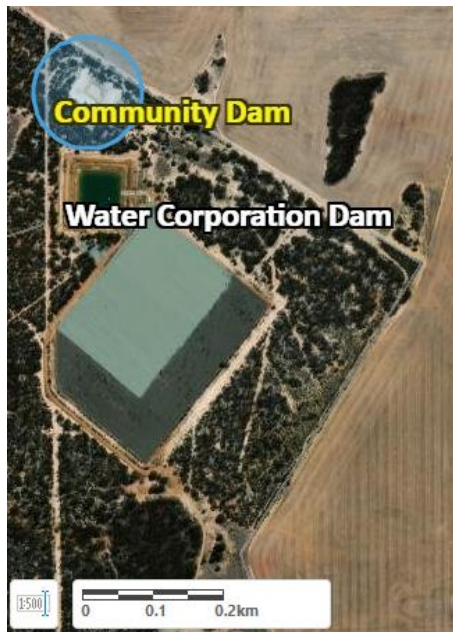
## Lake King standpipe



Aerial view of Lake King standpipe



Location map



Aerial view of dams



Aerial view of tank locations



Tanks



Community dam



## Lake King standpipe site description

Vesting	Dam – Water Corporation, Standpipe – Shire of Lake Grace
Purpose	Strategic community water supply for emergency stock water and fire fighting
Associated reserve	21238
Catchment type	Bitumen
Catchment area (ha)	~ 6.6 ha

### Location and coordinates

**Location: Newdegate–Ravensthorpe Road, junction of Lake-King Norseman Road**

Latitude	-33.0879
Longitude	119.6862
Eastings	750721.881858
Northings	6335758.391860

### Water supply and access

Structure type	Dam, tanks and standpipe (piped from Lake King community dam)
Capacity	64kL/day from community dam
Tank storage	250kL and two poly tanks
Standpipe Y/N	Yes
Swipe card system	Yes
Farm bot Y/N	Yes
Pump available Y/N	No
Heavy vehicle access	Yes
Turnaround area	Yes

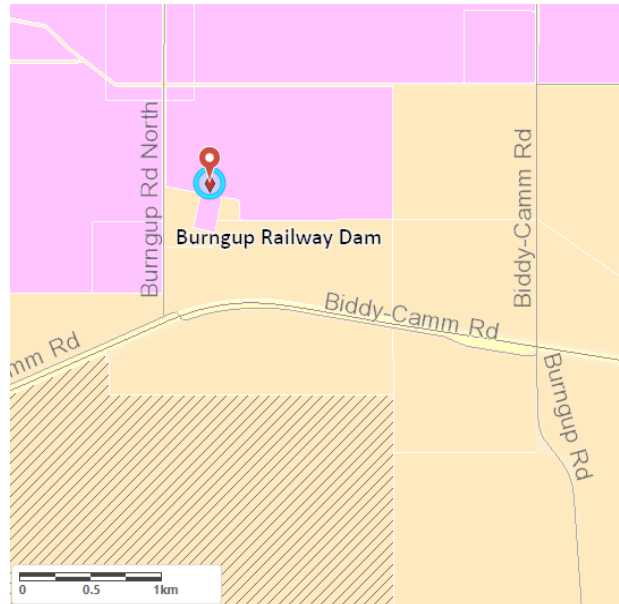
Supply comments	<p>Tanks are filled from Lake King community dam. The community dam is filled from the overflow provided by Water Corporation dam when supply allows.</p> <p>Tanks are located next to the tractor museum at the Varley–Ravensthorpe crossroads.</p>
Emergency access contacts	Manager Infrastructure Services 0448 089 092 / 9890 2500

# Description of community water supplies

## Burngup Railway dam



*Aerial of Burngup Railway dam*



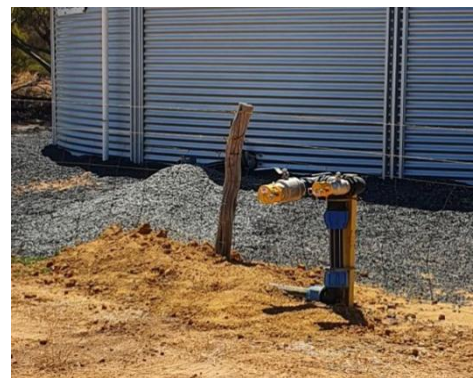
*Location map*



*Dam (Aug 2021)*



*Tank corner Biddy Camm & Burngup North roads*



*Fill point*

## Burngup Railway dam site description

Vesting	Dam – DBCA, tank private
Purpose	Strategic community water supply for emergency stock water and fire fighting
Associated reserve	31111
AA Dam #	5004
Catchment type	Earth
Catchment area (ha)	1.35 ha

### Location and coordinates

#### Location: Dam - Burngup Road North ~900 m from Biddy Camm Road

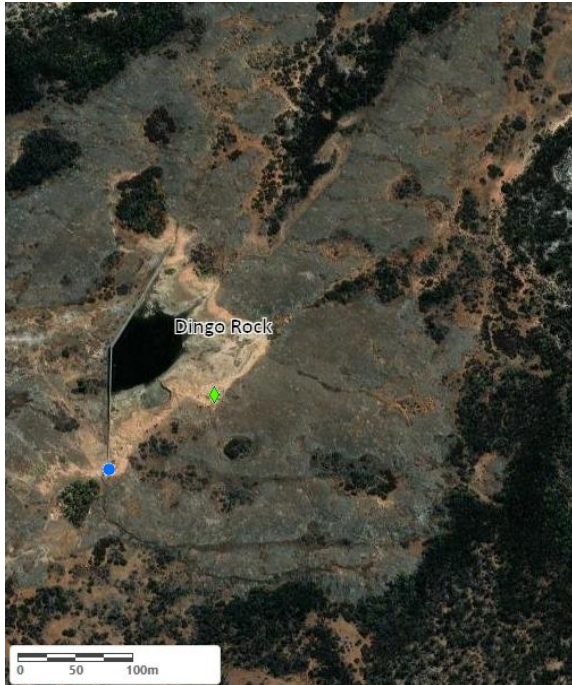
Latitude	-33.0074
Longitude	118.6653
Eastings	655563.90
Northings	6346660.37

### Water supply and access

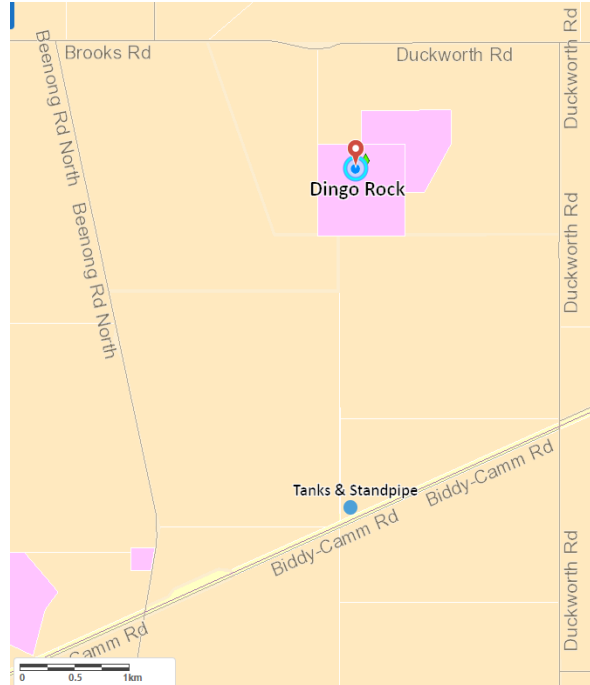
Structure type	Dam, tank & solar pump
Dam capacity	31,762kL
Tank storage	275kL
Camlock coupling sizes	50 mm and 80 mm
Standpipe Y/N	No
Pump available Y/N	No
Heavy vehicle access	Yes, on road verge
Turnaround area	Yes
Emergency access contacts	Manager Infrastructure Services 0448 089 092 / 9890 2500

# Description of community water supplies

## Dingo Rock



*Aerial view of Dingo Rock*



*Locality map*



*Fill point at Biddy Camm Road*



*Dingo Rock drone image*





*Dingo Rock and weir*



*Gauge*



*Dam weir wall*



*Plaque at Dingo Rock dam*



*Poly tank and standpipe*



*90 kL steel tank*



*Standpipe signage and coupling*



## Dingo Rock site description

Vesting	Department of Water and Environmental Regulation
Purpose	Strategic community water supply for emergency stock water and fire fighting
Associated Reserve	18911
AA Dam #	560
Catchment type	Rock
Catchment area (ha)	80 ha

### Location and coordinates

**Location: Dam - west of Duckworth Road; Tanks - Biddy Camm Road between Duckworth Road & Beenong North roads**

Latitude	-33.009777
Longitude	118.602914
Eastings	649729.031860
Northings	6346487.993110

### Water supply and access

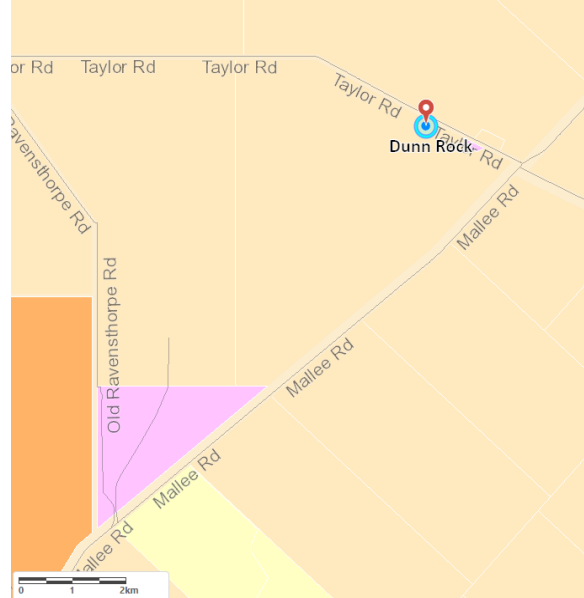
Structure type	Concrete weir on rock, tanks on Biddy Camm Road
Tank capacity	75kL poly tank, 90kL steel tank
Camlock coupling sizes	50 mm and 80 mm
Standpipe Y/N	Yes, at poly tank on Biddy Camm Road
Pump available Y/N	No
Heavy vehicle access	Yes, at tanks
Turnaround area	Yes, at tanks
Supply comments	Water is gravity fed from Dingo Rock dam to tanks located on Biddy Camm Road.
Emergency access contacts	Manager Infrastructure Services 0448 089 092 / 9890 2500

# Description of community water supplies

## Dunn Rock dam



*Aerial view of Dunn Rock*



*Locality map*



*Dunn Rock main dam (Dec 2021)*



*Dam 2 Leo dam (Dec 2021)*



*Dunn Rock tank*



*Two coupling locations from tank on either side of access road.*



*Coupling outlet near tank*

## Dunn Rock dam site description

Vesting	Private
Purpose	Strategic community water supply for emergency stock water and fire fighting
Associated reserve	Private land
Catchment type	CBH hardstand, Taylor Road & farmland
Catchment area (ha)	1 ha CBH roof, 5 ha hardstand, 1 km road, 1.30 ha farmland

### Location and coordinates

#### Tank location: Taylor Road ~1 km west of Dunn Rock CBH

Latitude	-33.441850562
Longitude	119.523535339
Eastings	734586.138130
Northings	6296879.644630

### Water supply and access

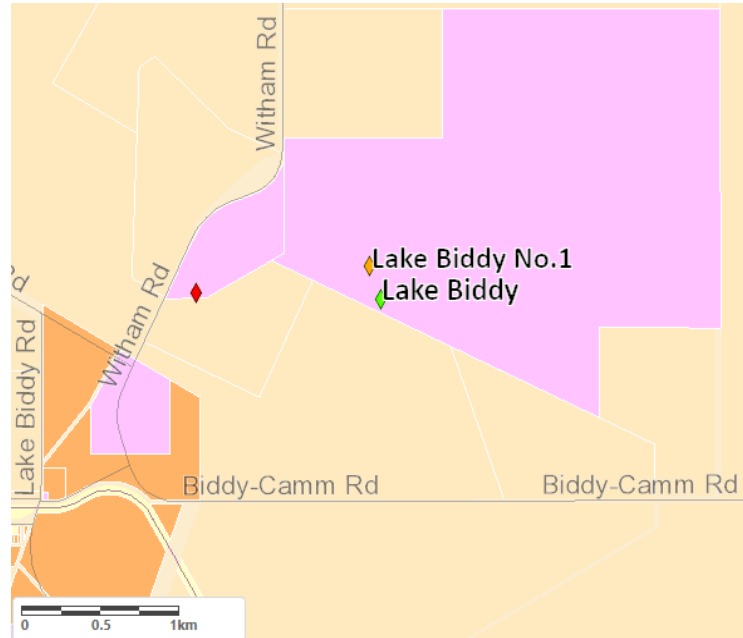
Structure type	Round earth/Turkey nest dam
Dam capacity	(Main/Turkey Nest) Dam 1, 41507kL
Tank storage	Yes, 250kL at Turkey Nest Dam
Camlock coupling sizes	50 mm, 80 mm & 100 mm
Standpipe Y/N	No
Pump available Y/N	No
Heavy vehicle access	Yes
Turnaround area	Yes
Supply comments	Water from dam 2 is pumped to Turkey Nest Dam (Dam 1) and tank.
Emergency access contacts	Manager Infrastructure Services 0448 089 092 / 9890 2500

# Description of community water supplies

## Lake Bidy twin dams/Lake Bidy No.1



*Aerial of Lake Bidy (A) & No.1 (B)*



*Location map*



*Drone photo of Lake Bidy dams (Aug 2021)*



*Lake Bidy (A)*



*Lake Bidy No.1 (B)*

## Lake Biddy twin dams site description

Vesting	Lake Grace Shire
Purpose	Strategic community water supply for emergency stock water and fire fighting
Associated reserve	23140
AA Dam #	561
Catchment type	Earth
Catchment area (ha)	17.52 ha

### Location and coordinates

**Location: ~1.4 km along Witham Road (off Biddy Camm Road), turn east on dirt road for ~1.4 km to Lake Biddy dam.**

Latitude	-32.9896
Longitude	118.9586
Eastings	683005.37743
Northings	6348164.48493

### Water supply and access

Structure type	2 x dams
Lake Biddy Dam (A) capacity	23 442kL
Lake Biddy No.1 (B) capacity	6,737kL
Tank storage	250kL
Camlock coupling sizes	50 mm & 80 mm
Standpipe & pump Y/N	No
Heavy vehicle access	Yes
Turnaround area	Yes
Emergency access contacts	Manager Infrastructure Services 0448 089 092 / 9890 2500



# Description of community water supplies

## Lake Grace town

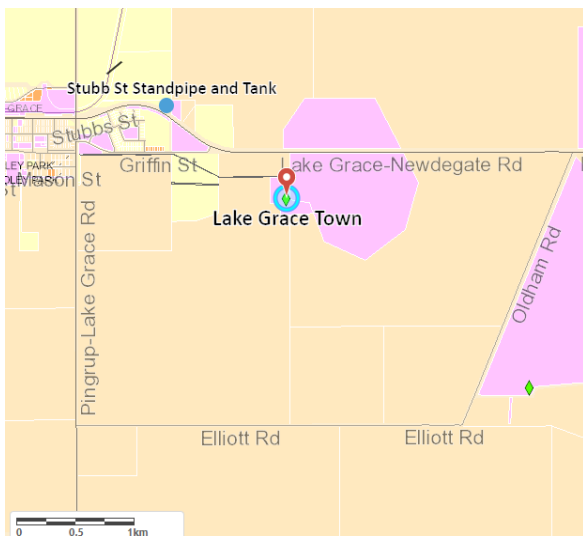
Please note this site is only to be used with Water Corporation permission.



*Aerial view of Lake Grace town*



*Aerial view of standpipe and tank*



*Location map*



*Non-potable signage*



*Tank and standpipe*



## Lake Grace town site description

Vesting	Water Corporation, Shire of Lake Grace agreement
Purpose	Strategic community water supply for emergency stock water and fire fighting
Associated reserve	Private
Catchment type	Bitumen
Catchment area (ha)	~ 25 ha

### Location and coordinates

**Location: Stubbs Street ~400 m from Griffin Street.**

Latitude	-33.1040
Longitude	118.4543
Eastings	635700.962919
Northings	6336242.788360

### Water supply and access

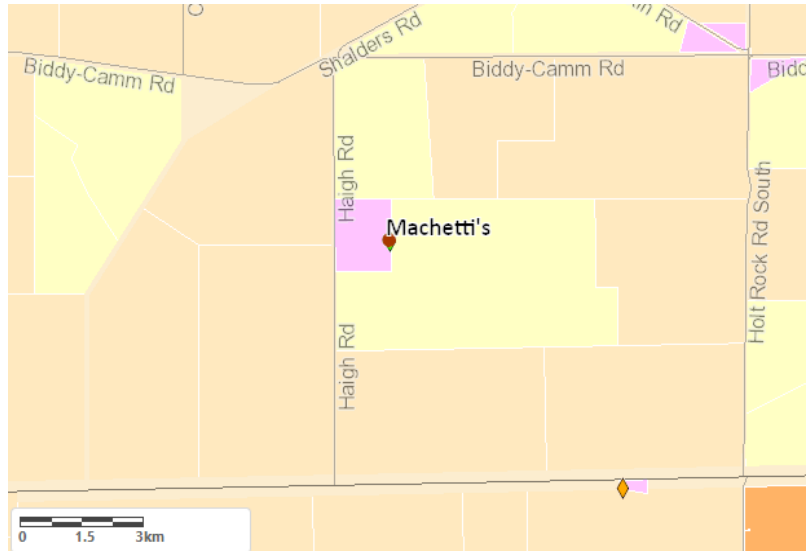
Structure type	Standpipe and tanks
Tank capacity	250kL tank on Stubbs Street
Standpipe Y/N	Yes, at tank on Stubbs Street
Farm bot Y/N	Yes
Pump available Y/N	No
Heavy vehicle access	Yes
Turnaround area	Yes
Supply comments	Overflow water pumped from Lake Grace town supply to tank at Stubbs Street in emergency situations only.
Emergency access contacts	Manager Infrastructure Services 0448 089 092 / 9890 2500

# Description of community water supplies

## Marchetti's tank



*Aerial view of Marchetti's tank*



*Location map*



*Marchetti's tank*



*Tank gauge*



*Fill access point*



*New standpipe*

## Marchetti's tank site description

Vesting	Department of Water and Environmental Regulation
Purpose	Strategic community water supply for emergency stock water and fire fighting
Associated reserve	28449
Catchment type	Rock catchment
Catchment area (ha)	45 ha

### Location and coordinates

#### Location: Haigh Road ~5.2 km from Newdegate–Ravensthorpe Road

Latitude	-33.041081087
Longitude	119.289676079
Eastings	713816.074836
Northings	6341828.604730

### Water supply and access

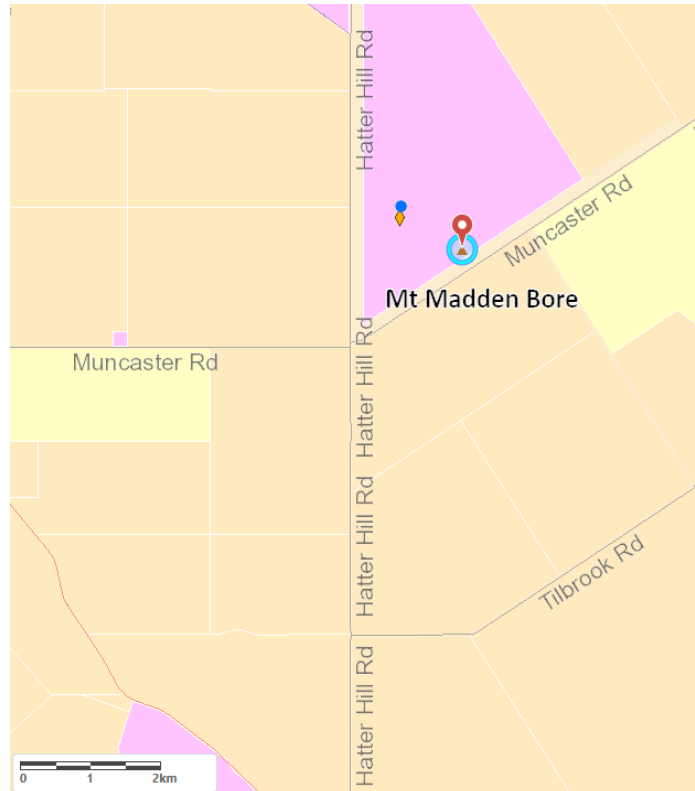
Structure type	Concrete tank with roof
Bore capacity	30 L/min bore top up
Tank storage	~4,420kL
Standpipe Y/N	Yes, overhead standpipe and coupling connection at swipe-card location
Swipe card Y/N	Yes
Farm bot	Yes
Pump available Y/N	No
Heavy vehicle access	Yes
Turnaround area	Yes
Emergency access contacts	Manager Infrastructure Services 0448 089 092 / 9890 2500

# Description of community water supplies

## Mt Madden bore



*Aerial view of Mt Madden bore*



*Location map*



*Bore tank 150 kL*



*Bore and solar pump*



*Tank outlet*

## Mt Madden bore site description

Vesting	Department of Water and Environmental Regulation
Purpose	Strategic community water supply for emergency stock water and fire fighting
Associated reserve	20110
Catchment type	Bore
Catchment area (ha)	N/A

### Location and coordinates

#### Location: Hatter Hill Road or Muncaster Road

Latitude	-33.247983011
Longitude	119.849422138
Eastings	765478.000017
Northings	6317599.999960

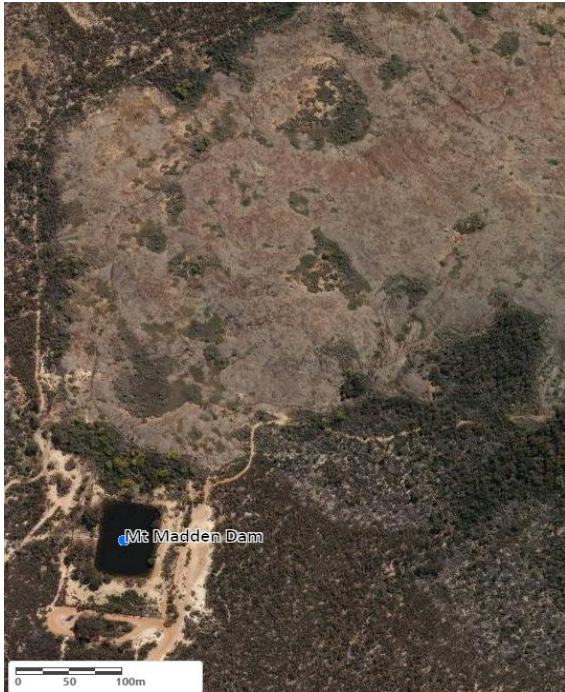
### Water supply and access

Structure type	Bore and tank
Bore capacity	70 L/min
Tank storage	150kL
Standpipe Y/N	No
Pump available Y/N	No (solar pump for transfer of water from bore to tank)
Heavy vehicle access	Yes
Turnaround area	Yes
Emergency access contacts	Manager Infrastructure Services 0448 089 092 / 9890 2500

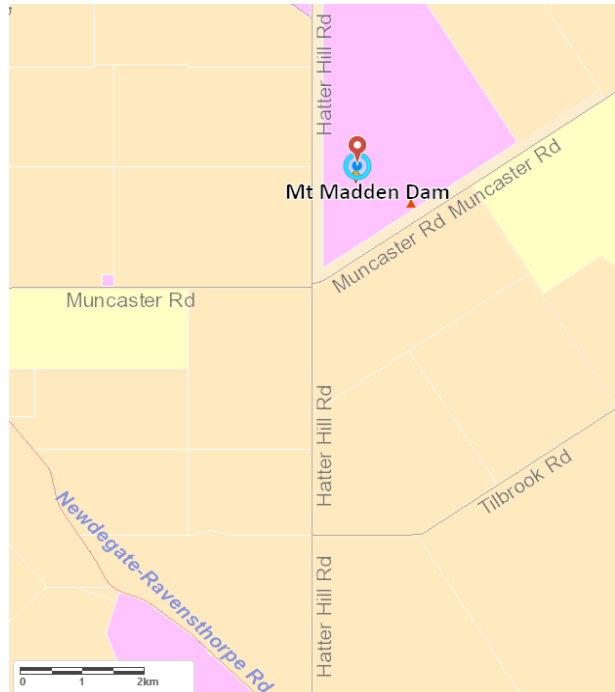


# Description of community water supplies

## Mt Madden dam



*Aerial view of Mt Madden dam*



*Location map*



*Mt Madden dam (2019)*



*New access pipe*

## Mt Madden dam site description

Vesting	Department of Water and Environmental Regulation
Purpose	Strategic community water supply for emergency stock water and fire fighting
Associated reserve	20110
AA Dam #	586
Catchment type	Rock
Catchment area (ha)	70 ha

### Location and coordinates

#### Location: Hatter Hill Road or Muncaster Road access

Latitude	-33.242452448
Longitude	119.839948804
Eastings	764611.770733
Northings	6318237.499170

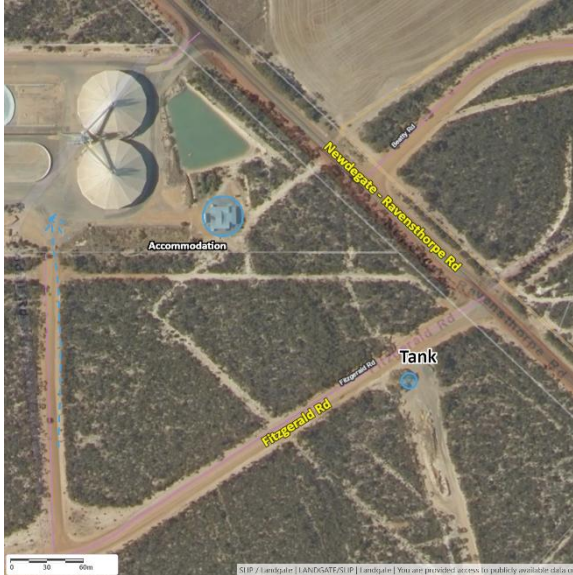
### Water supply and access

Structure type	Concrete-lined dam
Capacity	13,600 cubic metres
Tank storage	No
Standpipe Y/N	No
Pump available Y/N	No
Heavy vehicle access	Yes
Turnaround area	Yes
Supply comments	Recommend farmers do not access directly from dam.
Emergency access contacts	Manager Infrastructure Services 0448 089 092 / 9890 2500



# Description of community water supplies

## Mt Madden CBH tank



*Aerial view of Mt Madden*



*Location map*



*Tank*



*Tank outlets*



*Movable solar pump*

## Mt Madden CBH tank site description

Vesting	Department of Water and Environmental Regulation
Purpose	Strategic community water supply for emergency stock water and fire fighting
Associated reserve	Road reserve
AA Dam #	N/A
Catchment type	CBH bitumen
Catchment area (ha)	4 ha

### Location and coordinates

#### Location: Cnr Newdegate-Ravensthorpe Road & Fitzgerald Road

Latitude	-33.34323
Longitude	119.84900
Eastings	765150.032
Northings	6307036.256

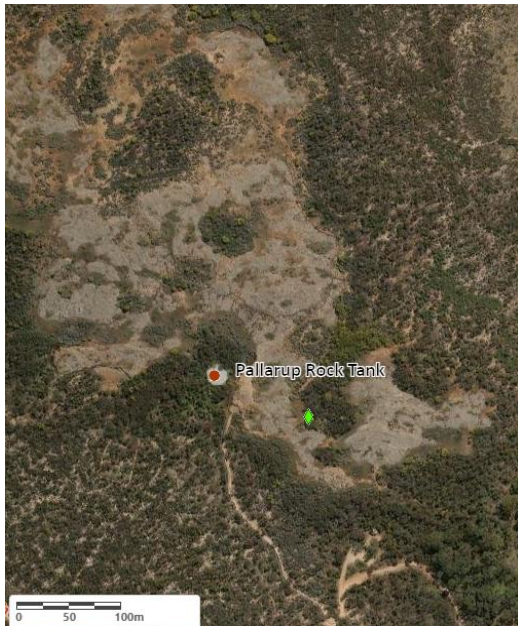
### Water supply and access

Structure type	Tank
Dam capacity	Unknown
Tank storage	280kL
Standpipe Y/N	No
Farm bot	No
Pump available Y/N	Not at tank (solar pump transfers water from dam to tank)
Heavy vehicle access	Yes
Turnaround area	Yes
Emergency access contact	Manager Infrastructure Services 0448 089 092 / 9890 2500

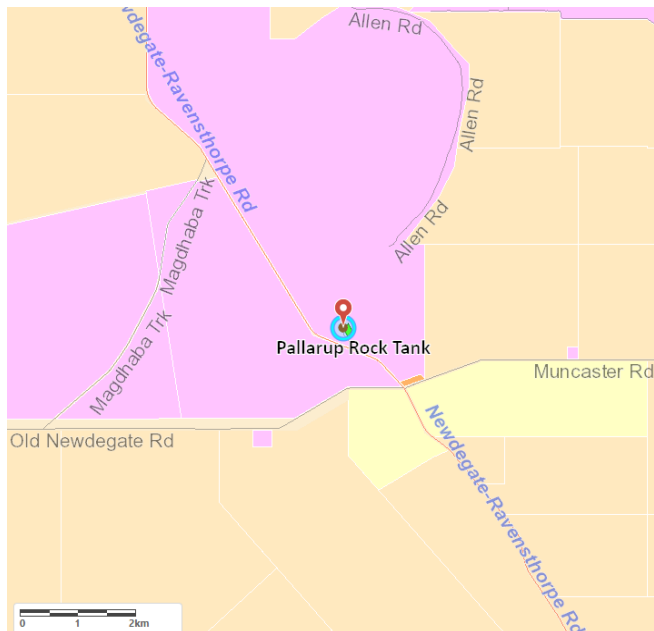


# Description of community water supplies

## Pallarup Rock tank



*Aerial view of Pallarup Rock tank*



*Location map*



*Rock catchment wall and pipe (September 2019)*



*Concrete tank (Sep 2019)*



*Concrete tank inspection hatch (Sep 2019)*

## Pallarup Rock tank site description

Vesting	Water Corporation
Purpose	Strategic community water supply for emergency stock water and fire fighting
Associated Reserve	29860 Pallarup Nature Reserve
AA Dam #	467
Catchment Type	Rock
Catchment Area (ha)	65 ha

### Location and coordinates

**Location: Newdegate – Ravensthorpe Road ~1.2km from Old Newdegate Road**

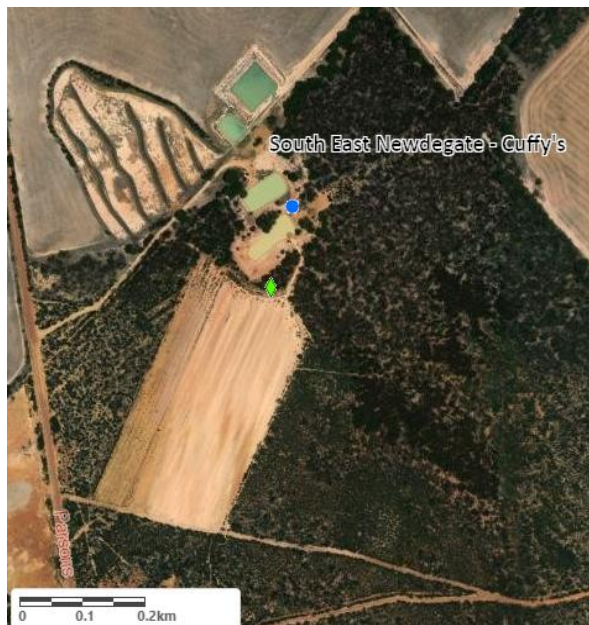
Latitude	-33.255592889
Longitude	119.752770674
Eastings	756447.987860
Northings	6316997.578770

### Water supply and access

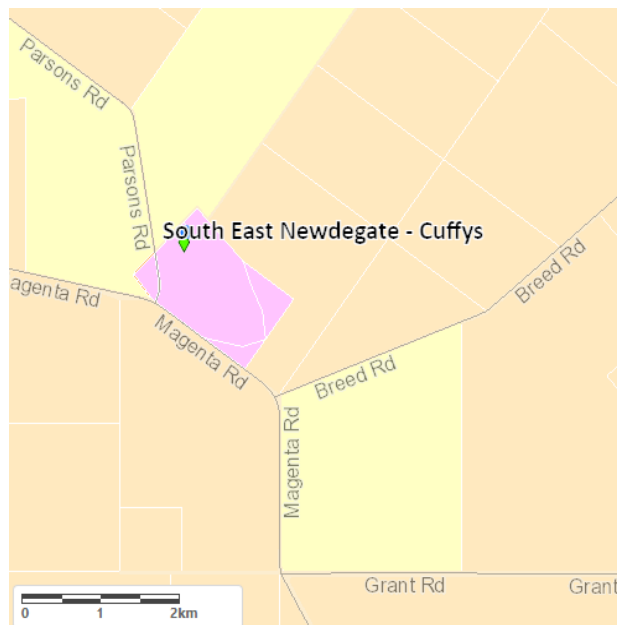
Structure type	Concrete tank
Tank storage	1,200kL
Standpipe Y/N	Yes
Pump available Y/N	No
Heavy vehicle access	Yes
Turnaround area	Yes
Supply comments	Tank may leak
Emergency access contacts	Manager Infrastructure Services 0448 089 092 / 9890 2500

# Description of community water supplies

## South-East Newdegate - Cuffy's (AA Dam # 563)



*Aerial view of Cuffy's dams*



*Location map*



*Dam 1 (Dec 2021)*



*Tank 250 kL (Apr 2020)*



*Dam 2 (Dec 2021)*



*Coupling outlets on tanks*



*Solar panels (April 2020)*

## South-East Newdegate - Cuffy's site description

Vesting	Department of Water and Environmental Regulation
Purpose	Strategic community water supply for emergency stock water and fire fighting
Associated reserve	18961
AA dam #	563
Catchment type	Earth
Catchment area (ha)	8.46 ha

### Location and coordinates

#### Location: Parsons Road ~700 m from Magenta Road

Latitude	-33.200403000
Longitude	119.125612000
Eastings	698134.041044
Northings	6324482.973440

### Water supply and access

Structure type	Dam 1 and 2, tank and pump
Dam capacity	Dam 1 = 6,160kL, Dam 2 = 5,078kL
Tank storage	250kL
Camlock coupling sizes	50 mm and 80 mm
Standpipe Y/N	No
Pump available Y/N	No (solar pump for transferring water between dams and to tank)
Heavy vehicle access	Yes
Turnaround area	Yes
Emergency access contacts	Manager Infrastructure Services 0448 089 092 / 9890 2500

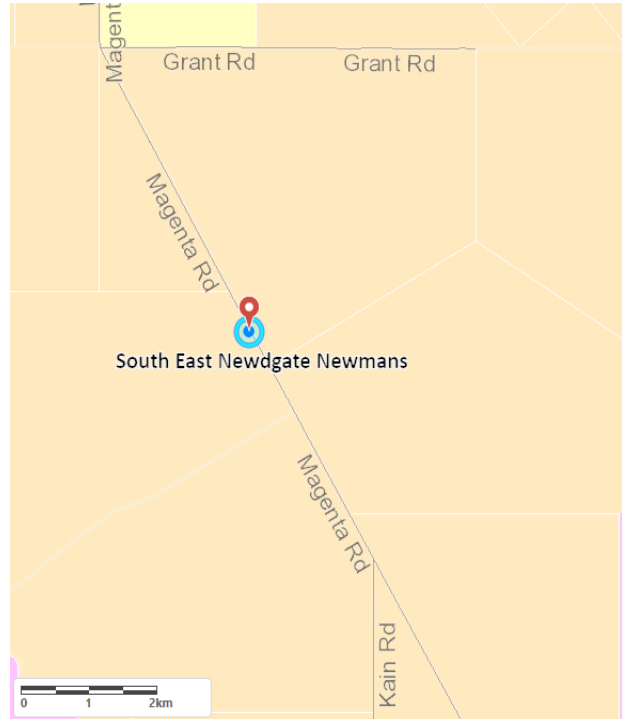


# Description of community water supplies

## South-East Newdegate - Newman's



*Aerial view of Newman's dam*



*Location map*



*Dam 1 (Dec 2021)*

## South-East Newdegate - Newman's site description

Vesting	Private with agreement in place expiry April 2026
Purpose	Strategic community water supply for emergency stock water and fire fighting
Associated reserve	Private land
Catchment type	Earth
Catchment area (ha)	5 ha

### Location and coordinates

#### Location: Magenta Road ~4.5 km south of Grant Road

Latitude	-33.274828000
Longitude	119.162540000
Eastings	701406.027289
Northings	6316158.952560

### Water supply and access

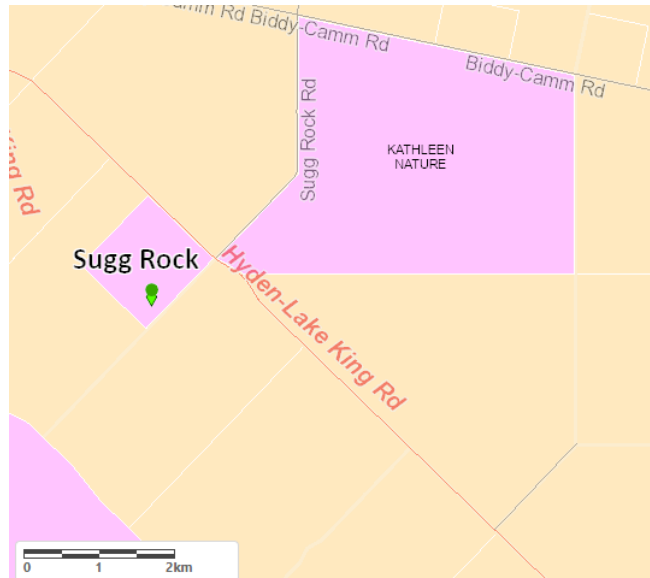
Structure type	Dam
Capacity	15,000kL
Tank storage	No
Standpipe Y/N	No
Pump available Y/N	No
Heavy vehicle access	Yes
Turnaround area	Yes
Emergency access contacts	Manager Infrastructure Services 0448 089 092 / 9890 2500

# Description of community water supplies

## Sugg Rock



*Aerial view of Sugg Rock*



*Location map*



*Sugg Rock dam (Sep 2019)*



*Coupling on standpipe*



*Standpipe*



*Poly tanks*

## Sugg Rock site description

Vesting	Department of Water and Environmental Regulation
Purpose	Strategic community water supply for emergency stock water and fire fighting
Associated reserve	23842
AA dam #	554
Catchment type	Rock
Catchment area (ha)	2.81 ha

### Location and coordinates

#### Location: Sugg Rock Road off Hyden-Lake King Road

Latitude	-33.035742151
Longitude	119.613832632
Eastings	744109.464452
Northings	6341713.850870

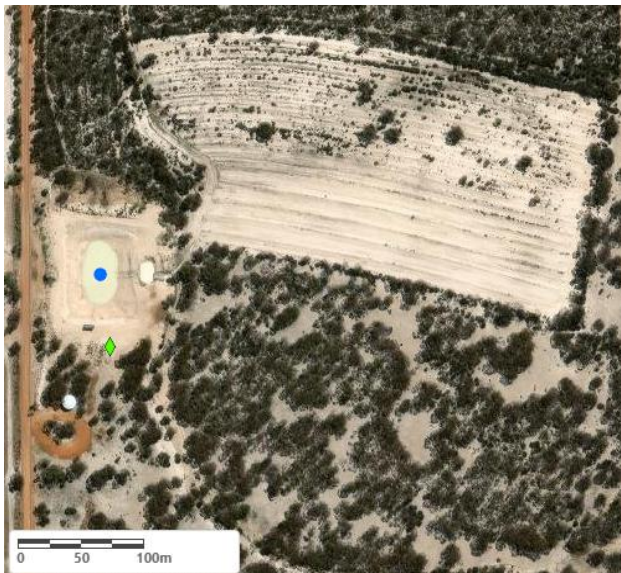
### Water supply and access

Structure type	Dam, tanks and standpipe
Dam Capacity	10,554kL
Tank storage	2 x poly tanks 45kL each
Standpipe Y/N	Yes
Swipe card Y/N	Yes
Pump available Y/N	No
Heavy vehicle access	Yes
Turnaround area	Yes
Emergency access contacts	Manager Infrastructure Services 0448 089 092 / 9890 2500

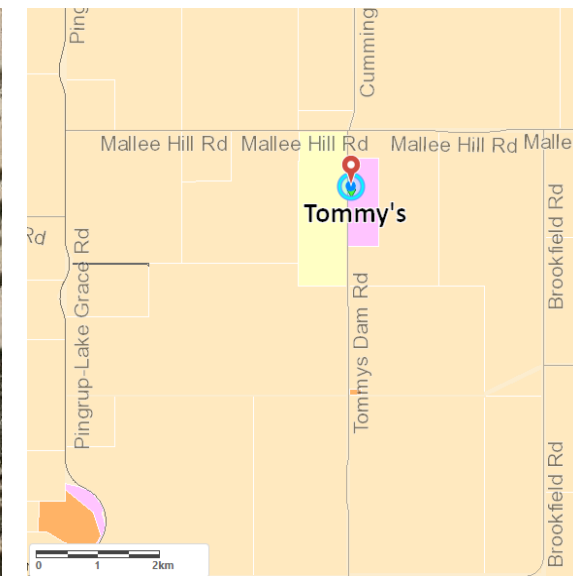


# Description of community water supplies

## Tommy's dam



*Aerial view of Tommy's*



*Location map*



*Tommy's dam with gauges (Dec 2021)*



*Coupling*



*Coupling*



*Tank 250 kL*



*Solar pump and panels*

## Tommy's dam site description

Vesting	Department of Water and Environmental Regulation
Purpose	Strategic community water supply for emergency stock water and fire fighting
Associated reserve	23598
Catchment type	Earth
Catchment area (ha)	5.87 ha

### Location and coordinates

#### Location: Tommy's Dam Road off Mallee Hill Road

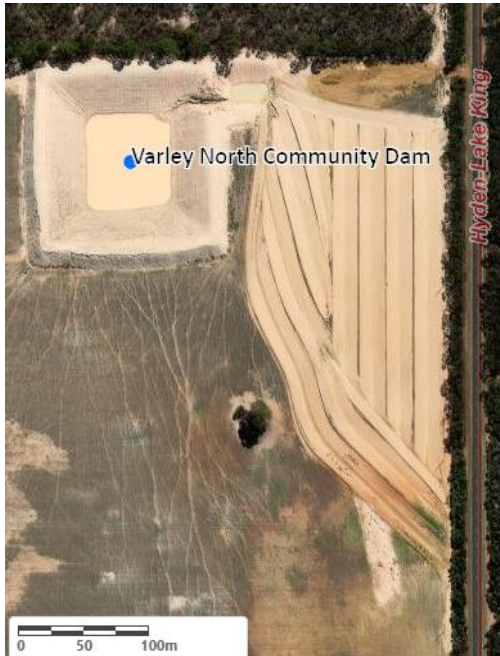
Latitude	-33.252866522
Longitude	118.520708577
Eastings	641658.332072
Northings	6319648.716640

### Water supply and access

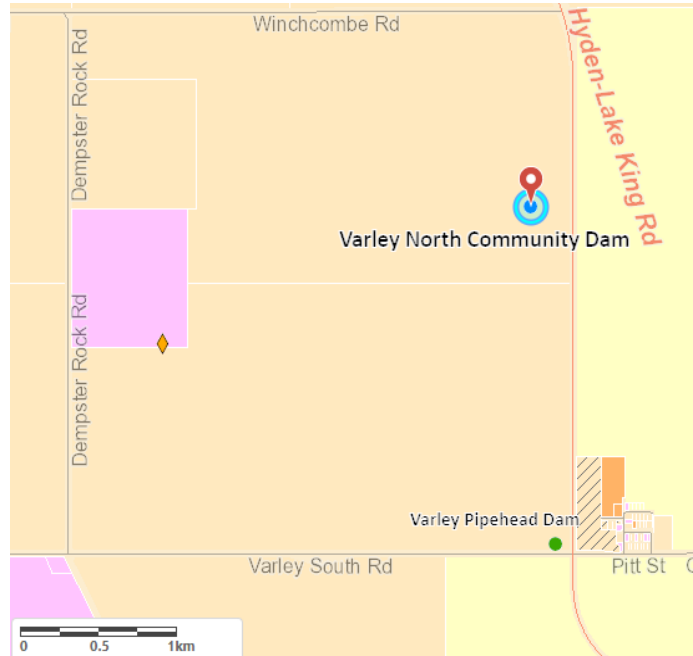
Structure type	Earth dam, tank and solar pump
Dam capacity	10,601kL
Tank storage	250kL
Camlock coupling sizes	50 mm and 80 mm
Standpipe Y/N	No
Farm bot	Yes
Pump available Y/N	No (solar pump to transfer water from dam to tank)
Heavy vehicle access	Yes
Turnaround area	Yes
Emergency access contacts	Manager Infrastructure Services 0448 089 092 / 9890 2500

# Description of community water supplies

## Varley North community dam



*Aerial view of Varley North*



*Location map*



*Varley North community dam*



*Silt dam and catchment (Apr 2020)*

## Varley North community dam site description

Vesting	Private with agreement in place with Alan Sutherland
Purpose	Strategic community water supply for emergency stock water and fire fighting
Associated reserve	Private land
Catchment type	Catchment A: Earth. Catchment B: CBH
Catchment area (ha)	Earthed (Catchment A) 4.11 ha, CBH (Catchment B) 5.1 ha

### Location and coordinates

#### Location: Hyden-Lake King Road ~2.2 km from Varley South Road

Latitude	-32.776081321
Longitude	119.503831562
Eastings	734517.675626
Northings	6370761.144760

### Water supply and access

Structure type	Dam
Dam capacity	Main dam 36,454kL, silt trap 1,441kL
Tank storage	No
Standpipe Y/N	No
Pump available Y/N	No
Heavy vehicle access	Yes
Turnaround area	Yes
Emergency access contacts	Manager Infrastructure Services 0448 089 092 / 9890 2500

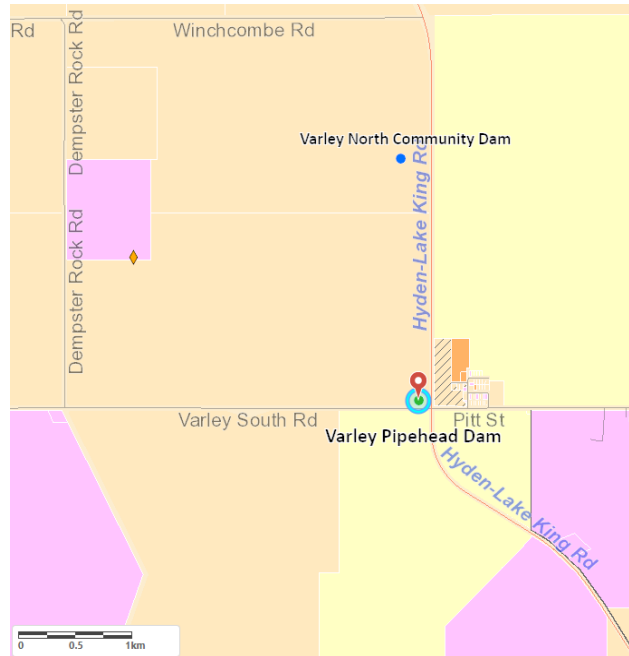


# Description of community water supplies

## Varley Pipehead dam



*Aerial of Varley Pipehead dam*



*Location map*



*Varley Pipehead dam (Jan 2022). Pictures: Dean Sinclair*



*Solar pump*



*Tank at Varley Pipehead dam*

## Varley Pipehead dam site description

Vesting	Private with agreement in place with Alan Sutherland
Purpose	Strategic community water supply for emergency stock water and fire fighting
Associated reserve	Private land
Catchment type	Varley CBH bin, surrounding road, 4 ha catchment
Catchment area (ha)	6.7 ha (CBH catchment area)

### Location and coordinates

#### Location: Corner of Hyden-Lake King Road & Varley South Road

Latitude	-32.795016046
Longitude	119.505546406
Eastings	734628.580410
Northings	6368657.470460

### Water supply and access

Structure type	2 x dams, standpipe and tank
Capacity	4,000kL & 3,000kL
Tank storage	250kL
Standpipe Y/N	Yes
Pump available Y/N	No (solar pump to transfer water from dam to tank)
Heavy vehicle access	Yes
Turnaround area	Yes
Supply comments	Dams feed the standpipe on Varley South Road.
Emergency access contacts	Manager Infrastructure Services 0448 089 092 / 9890 2500

# Description of community water supplies

## Lake Magenta dam



*Aerial view of Lake Magenta dam*



*Location map*



*Left and above: Lake Magenta Dam and sign*

## Lake Magenta dam site description

Vesting	Shire of Lake Grace
Purpose	Strategic community water supply for emergency stock water and fire fighting
Associated reserve	R20274
Catchment type	Earth
Catchment area (ha)	5 ha

### Location and coordinates

#### Location: Magenta Road ~3.44 km north of Giles Road

Latitude	-33.36741
Longitude	119.24453
Eastings	708822.559
Northings	6305730.387

### Water supply and access

Structure type	Dam
Capacity	15,000kL
Tank storage	No
Standpipe Y/N	No
Pump available Y/N	No
Heavy vehicle access	Yes
Turnaround area	Yes
Emergency access contacts	Manager Infrastructure Services 0448 089 092 / 9890 2500



# Description of community water supplies

## Lake Grace north dam



*Aerial view of Lake Grace north tank and dam*



*Location map*



*Lake Grace north Dam*



*Tank*



*Lake Grace north dam with daisy covers installed*

## Lake Grace north dam site description

Vesting	Shire of Lake Grace
Purpose	Strategic community water supply for emergency stock water and fire fighting
Associated reserve	R18067
Catchment type	Earth
Catchment area (ha)	2.2 ha

### Location and coordinates

#### Location: Kulin – Lake Grace Road, ~550m west of Eggers Road

Latitude	-32.95169
Longitude	118.46581
Eastings	637010.589
Northings	6353115.273

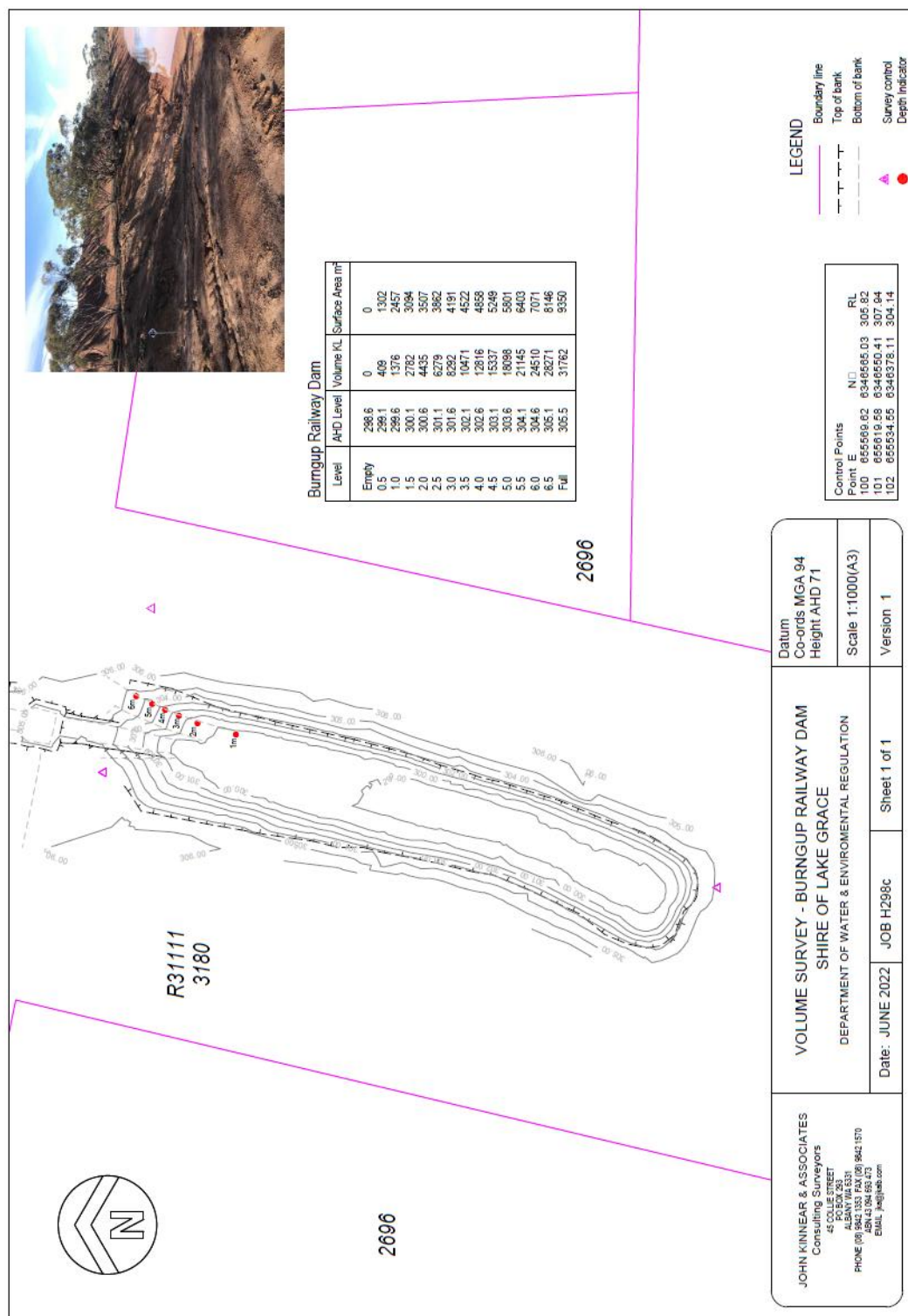
### Water supply and access

Structure type	Dam and tank
Tank storage	Yes
Tank capacity	280kL
Standpipe Y/N	No
Pump available Y/N	Yes, Solar pump
Heavy vehicle access	Yes
Turnaround area	Yes
Emergency access contacts	Manager Infrastructure Services 0448 089 092 / 9890 2500

# Appendices

## Appendix A – Dam surveys

### Burngup Railway dam survey

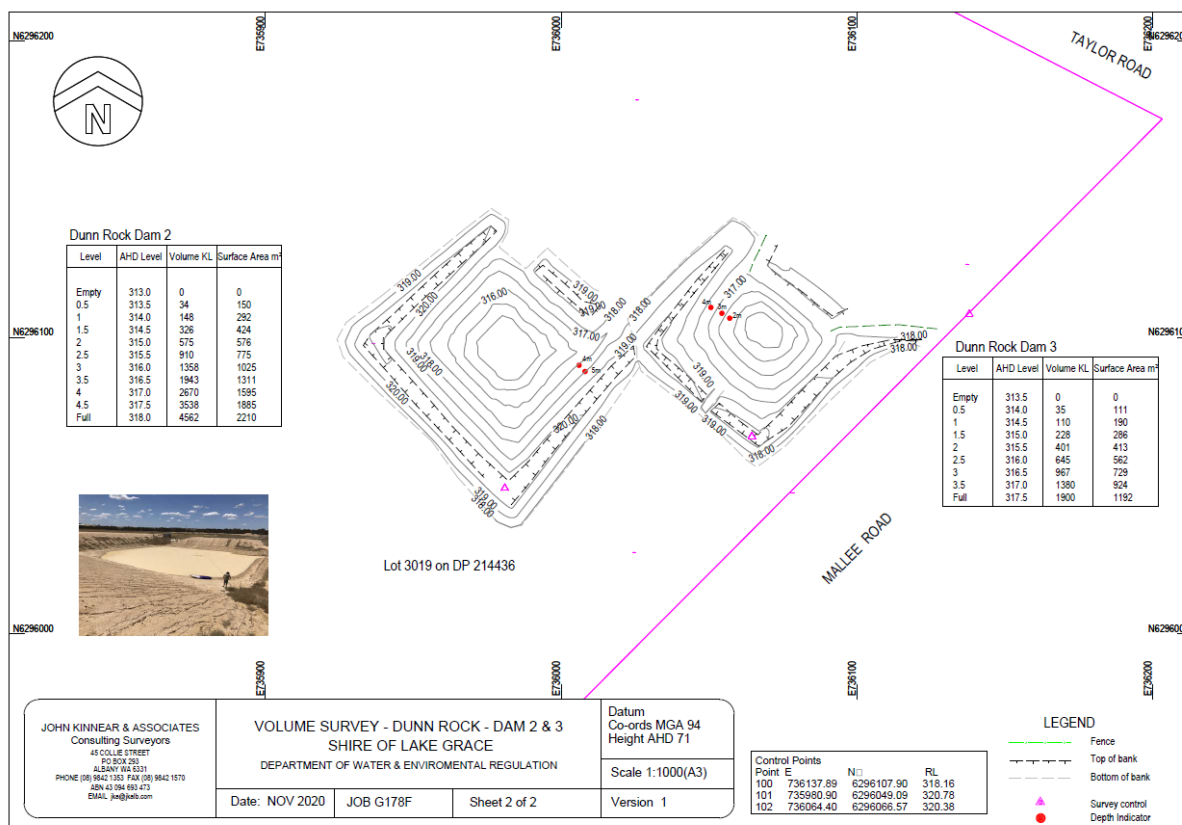
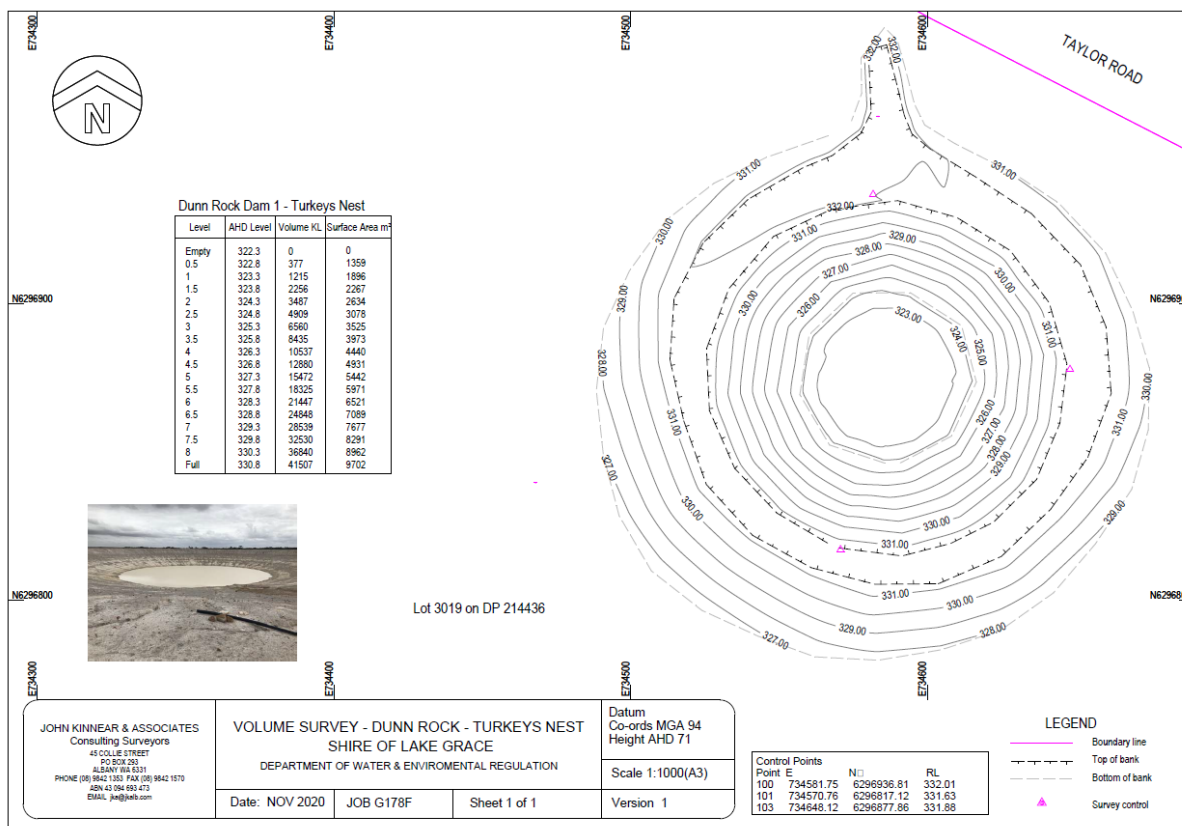




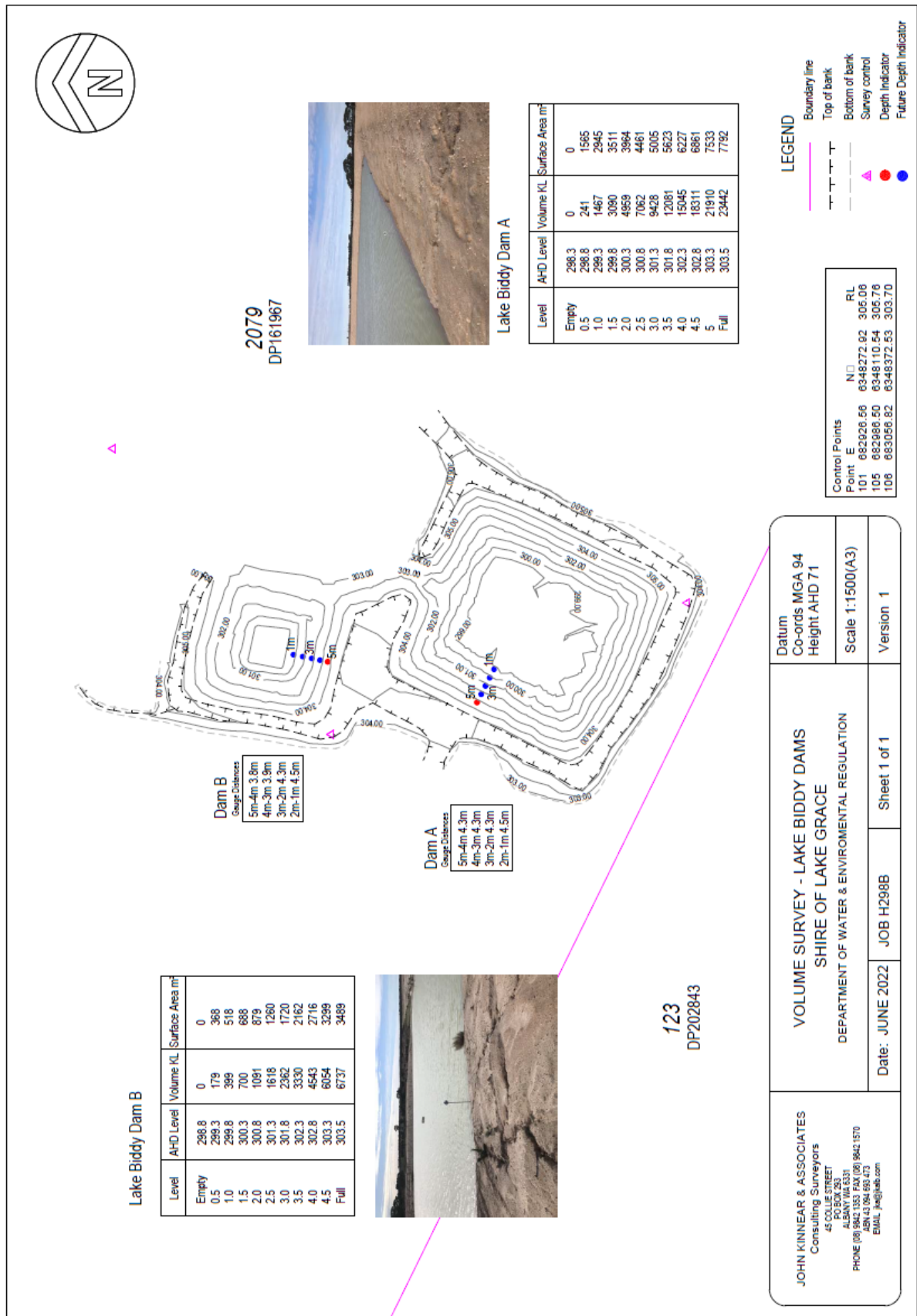




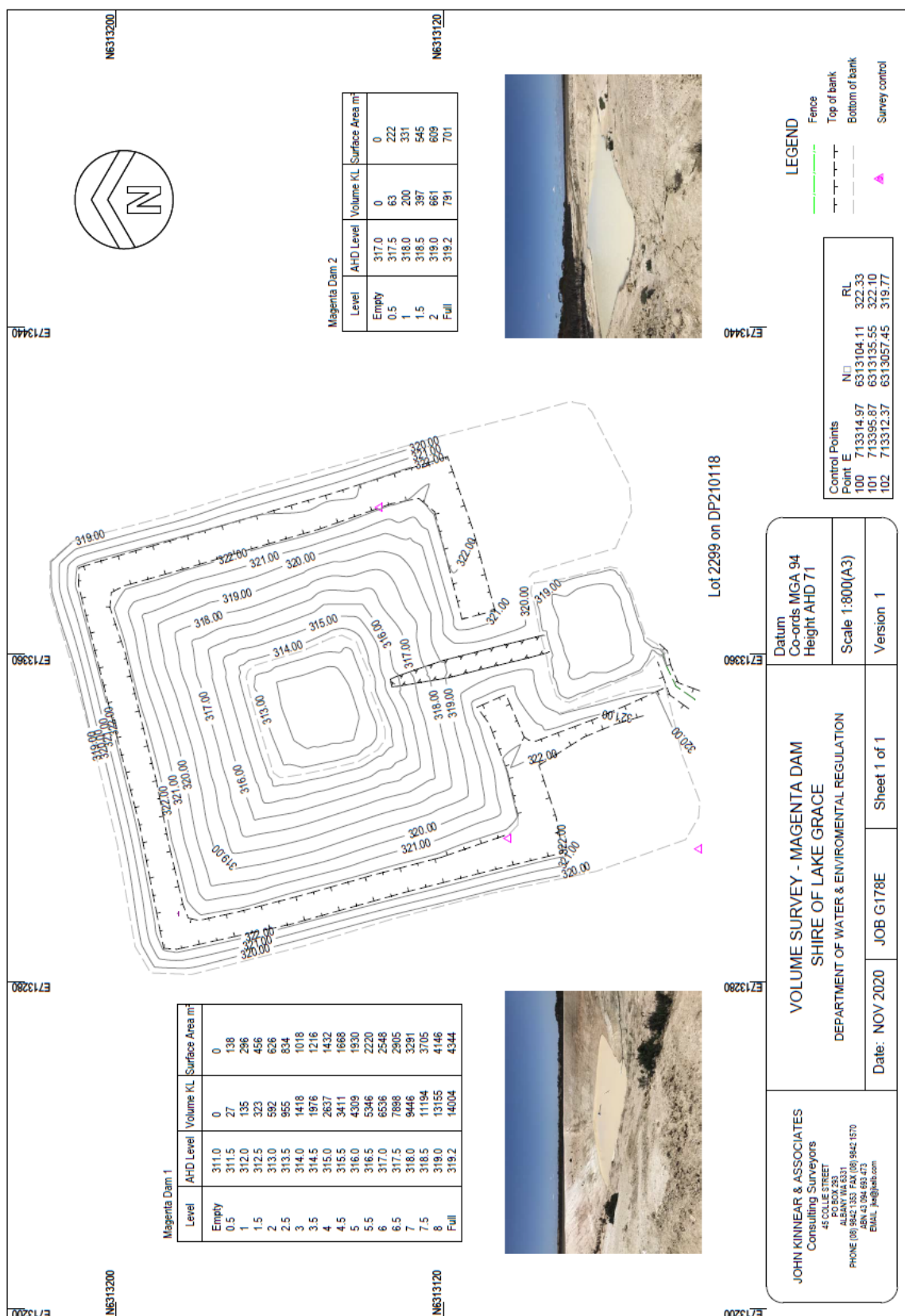
# Dunn Rock dam surveys



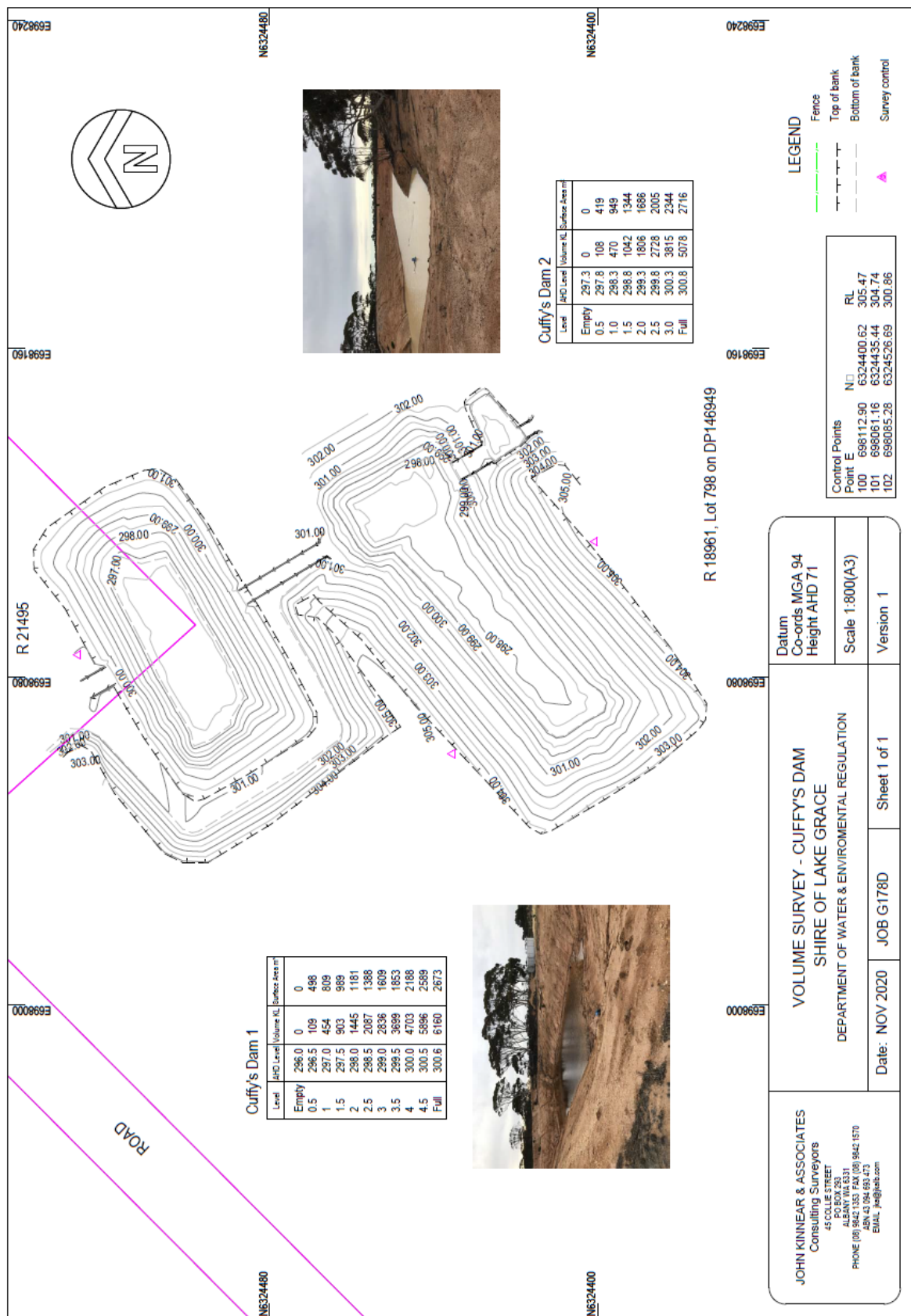
# Lake Biddy dam A & B survey



## Magenta North/Ardler Road dam survey

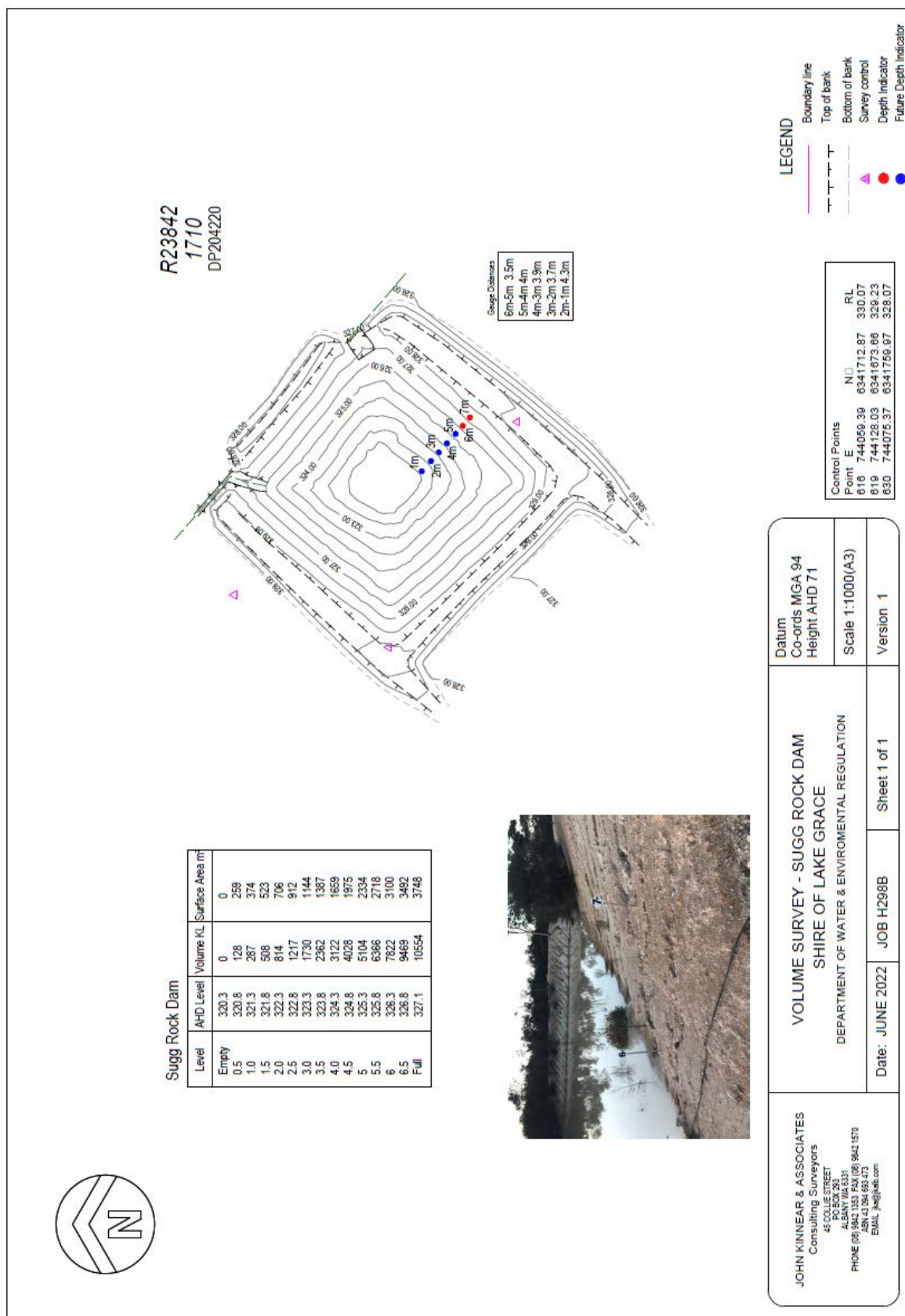


# South East Newdegate Cuffy's dam survey



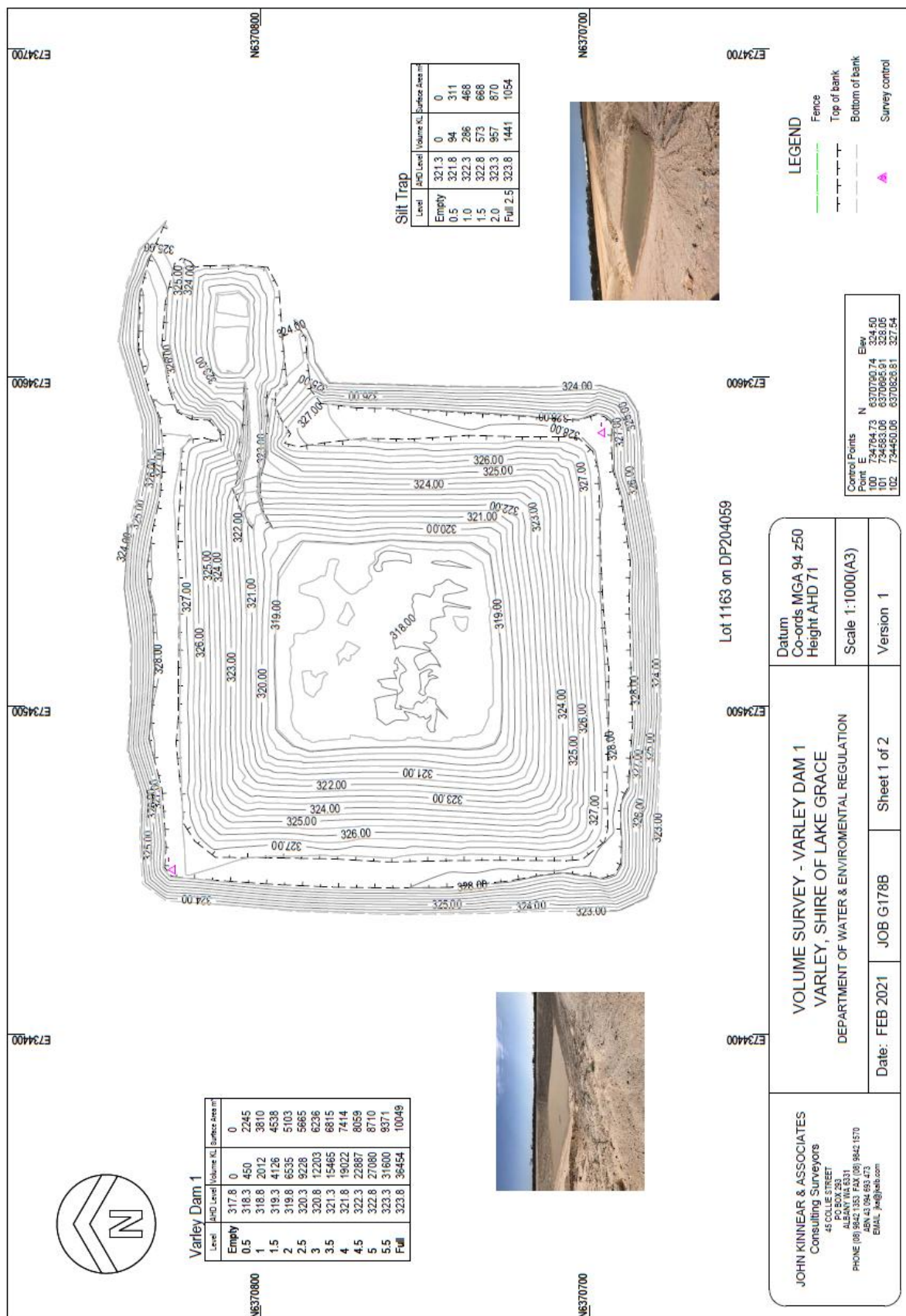


## Sugg Rock dam survey





# Varley North community dam survey



## Glossary

<b>Camlock</b>	A male hose coupling fixed for connection of a water hose. Camlocks can be attached to fill points such as tanks or standpipes to allow access to water supply. Camlock sizes vary from site to site and generally include 50 mm (2 inch), and 80 mm (3 inch) as a standard. At some sites a 100 mm (4 inch) camlock has been included for firefighting purposes.
<b>Catchment types</b>	<p>Earth – land cleared, cambered and compacted to provide a catchment area for surface water.</p> <p>Bitumen – catchment lined with bitumen to allow capture of surface water.</p> <p>Rock catchment – rock that slopes, has containment walls to capture surface water to a storage source (e.g. a tank or a concrete dam).</p> <p>Bore – a drilled casing that accesses ground water to provide a water supply.</p> <p>CBH – water is captured from CBH grain silo storage facility and stored in a dam or tank.</p>
<b>Farm bot</b>	A device fitted to some tanks to regularly record the water level and feed this information into a website. You can access this website at <a href="http://app.farmbot.com.au">app.farmbot.com.au</a> (Login ID: <b>public.access</b> Password: <b>access1</b> ) to see water tank levels for tanks fitted with farm bots.
<b>Fill point</b>	Location where a water supply can be accessed from using camlock fittings either via standpipe, swipe card system, tank or bore.
<b>Non-potable</b>	Water not suitable for human consumption.
<b>Solar pump</b>	A pump powered via solar energy that pumps water from one location to another (e.g. from dam to dam or from dam to tank).
<b>Staff gauges</b>	A marker measuring tool positioned at surveyed depths in a dam to indicate water levels.
<b>Standpipe</b>	A pipe overhead, on a plinth or raised off the ground to provide a fill point for water supply.
<b>Swipe card</b>	A metered fill point requiring a card to be swiped to start pumping system. Contact the shire for further information.
<b>Vesting</b>	Person or governing agency with responsibility for managing land.





Department of Water and Environmental Regulation  
Prime House  
8 Davidson Terrace  
Joondalup Western Australia 6027

Locked Bag 10, Joondalup DC WA 6919

Phone: 08 6364 7000  
Fax: 08 6364 7001  
National Relay Service 13 36 77  
[wa.gov.au/dwer](http://wa.gov.au/dwer)