

South West

Rainfall, streamflow and groundwater

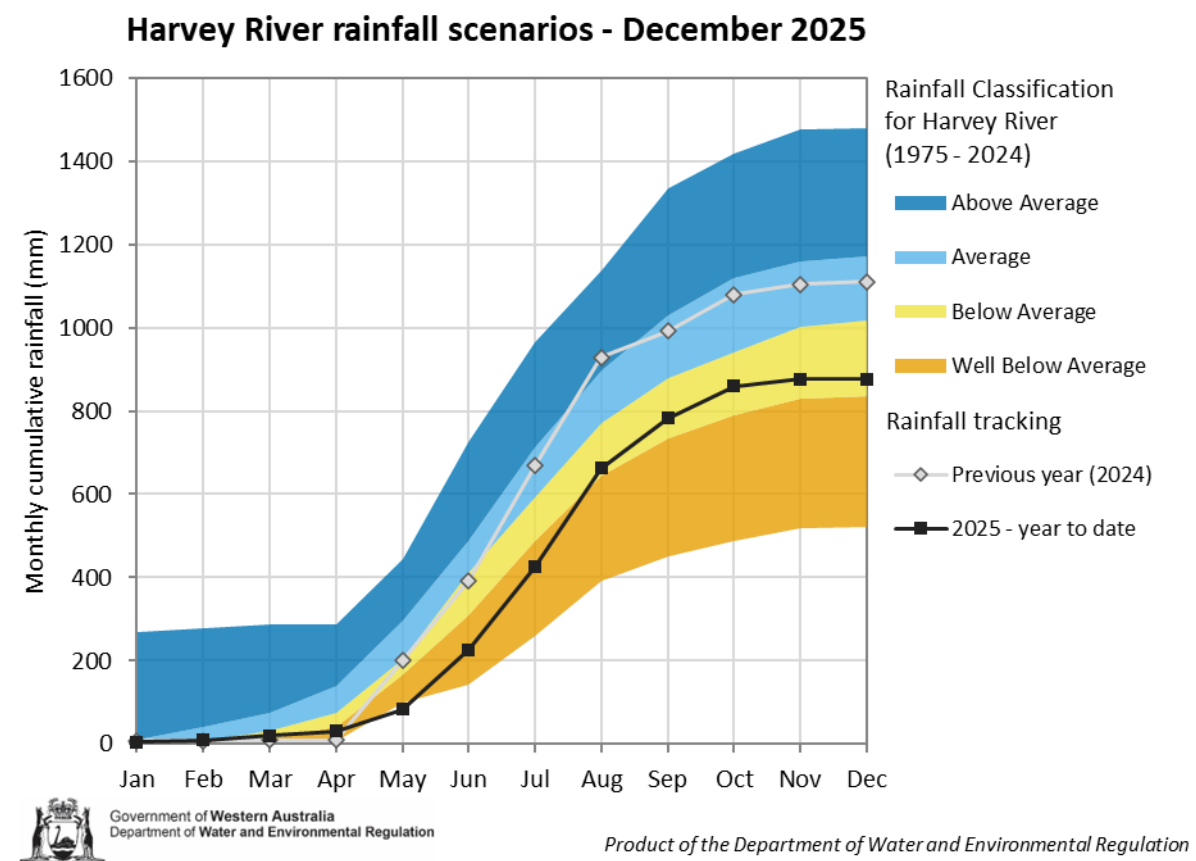
Rainfall

Harvey River, Pemberton

The graph shows how the total amount of rainfall, or streamflow in a particular place compares to previous years – specifically, to the period from 1975 to last year. The graph also shows the potential rainfall or streamflow for the rest of the year based on a few scenarios.

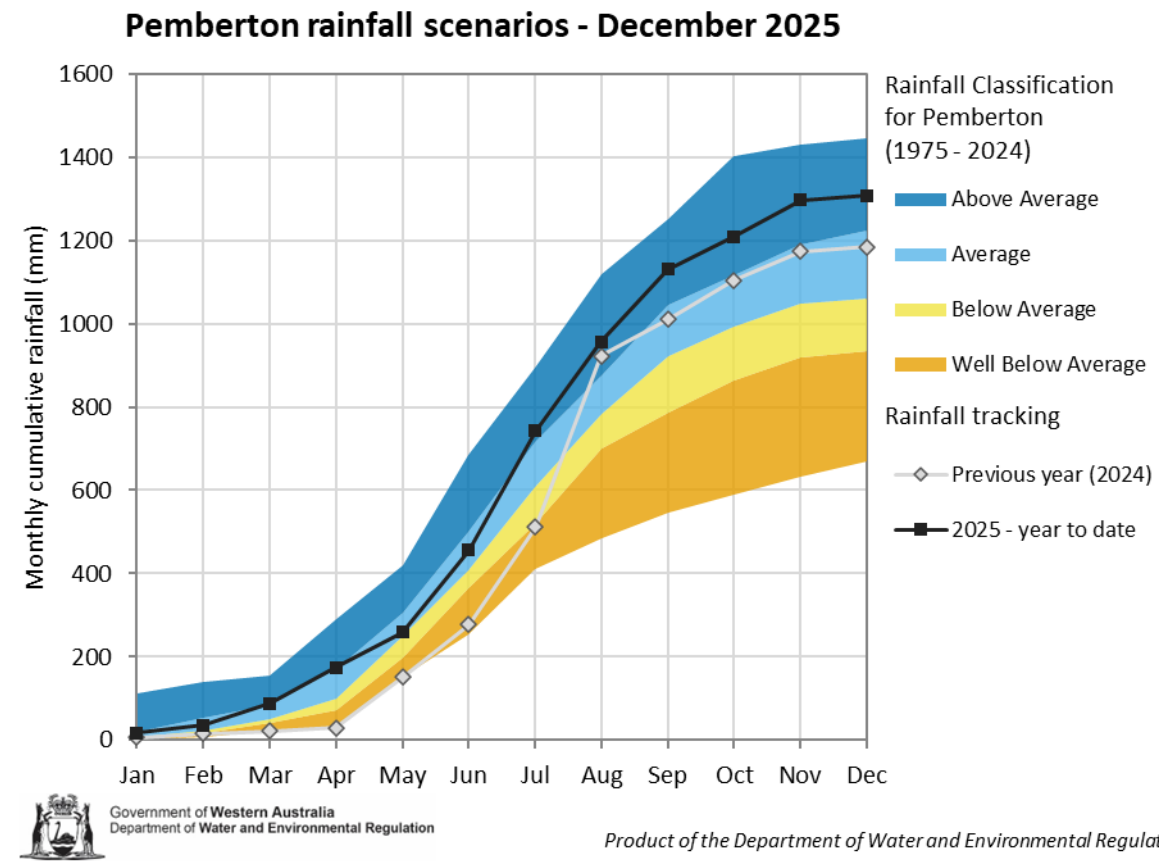
Harvey River

Rainfall in Harvey is currently tracking in the below average category.



Pemberton

Rainfall in Pemberton is tracking in the above average category.



Streamflow

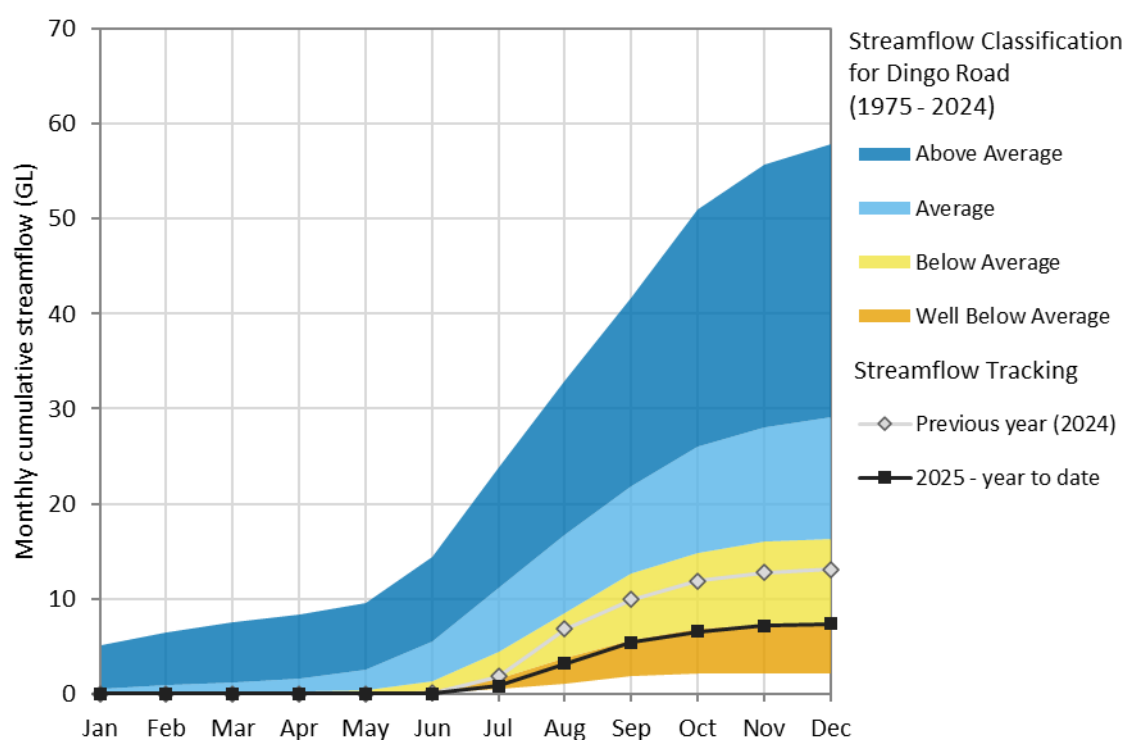
Harvey River, Pemberton (Lefroy Brook)

The graph shows how the total amount of rainfall, or streamflow in a particular place compares to previous years – specifically, to the period from 1975 to last year. The graph also shows the potential rainfall or streamflow for the rest of the year based on a few scenarios.

Harvey River

Streamflow in Harvey River, east of Harvey is tracking in the well below average category.

Harvey River streamflow scenarios - December 2025



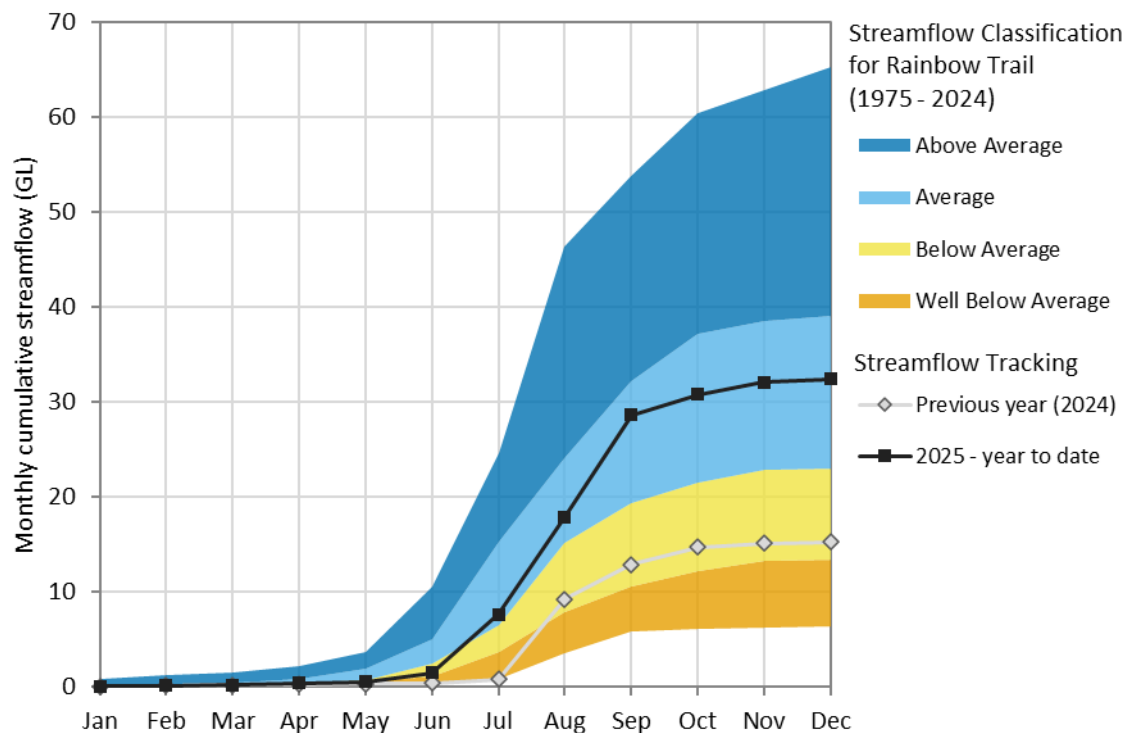
Government of Western Australia
Department of Water and Environmental Regulation

Product of the Department of Water and Environmental Regulation

Pemberton (Lefroy Brook)

Streamflow in Lefroy Brook, near Pemberton is tracking in the average category.

Lefroy Brook streamflow scenarios - December 2025



Government of Western Australia
Department of Water and Environmental Regulation

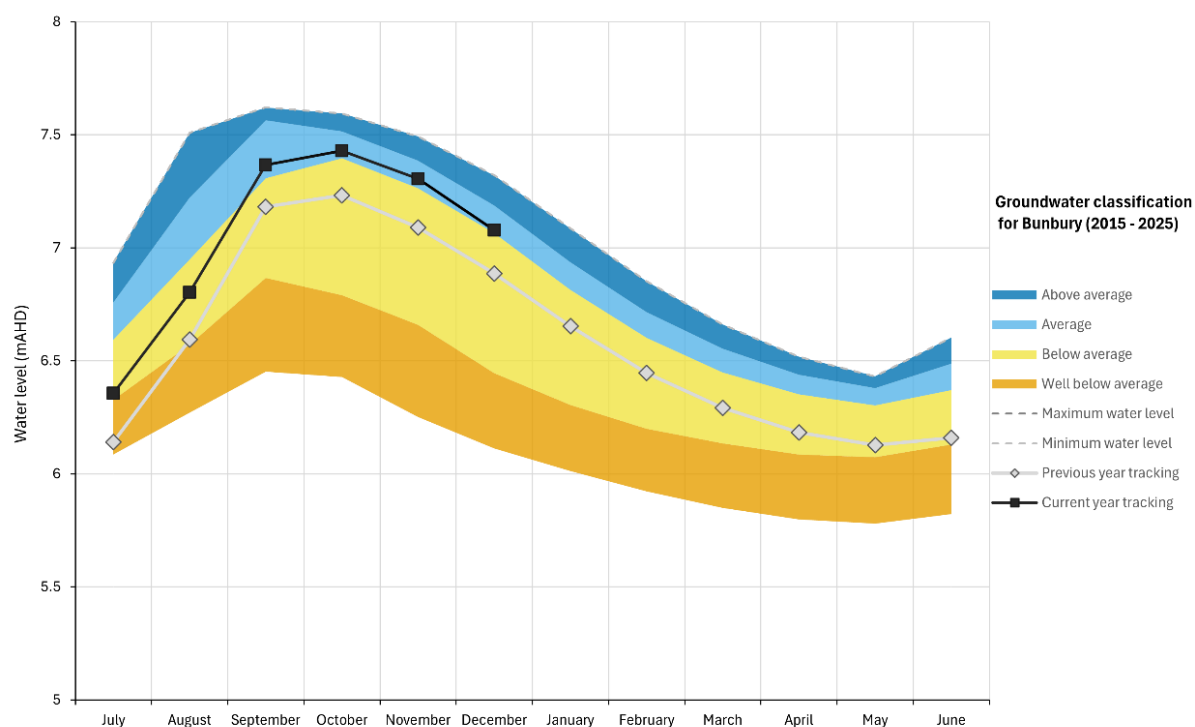
Product of the Department of Water and Environmental Regulation

Groundwater

Bunbury

Groundwater levels at the representative bore in Bunbury are tracking on average and are higher than groundwater levels recorded in the previous year.

Bunbury groundwater tracking - December 2025

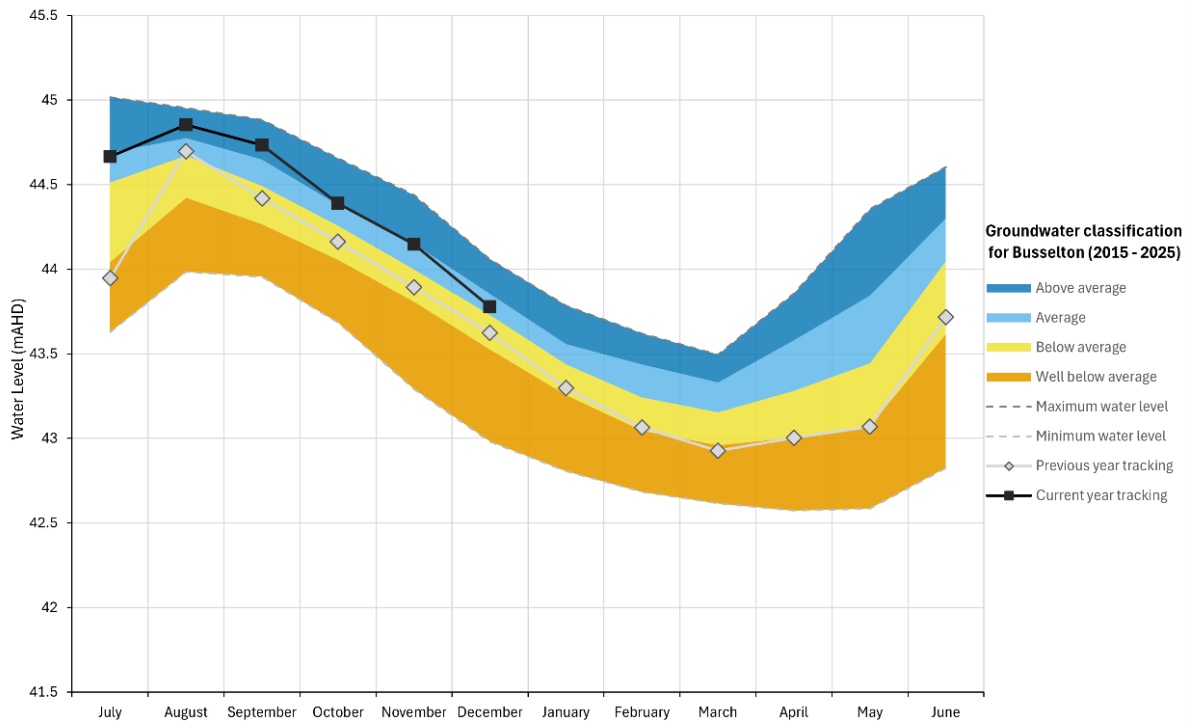


Product of the Department of Water and Environmental Regulation

Busselton

Groundwater levels at the representative bore in Busselton are tracking on average and are higher than groundwater levels recorded in the previous year.

Busselton groundwater tracking - December 2025

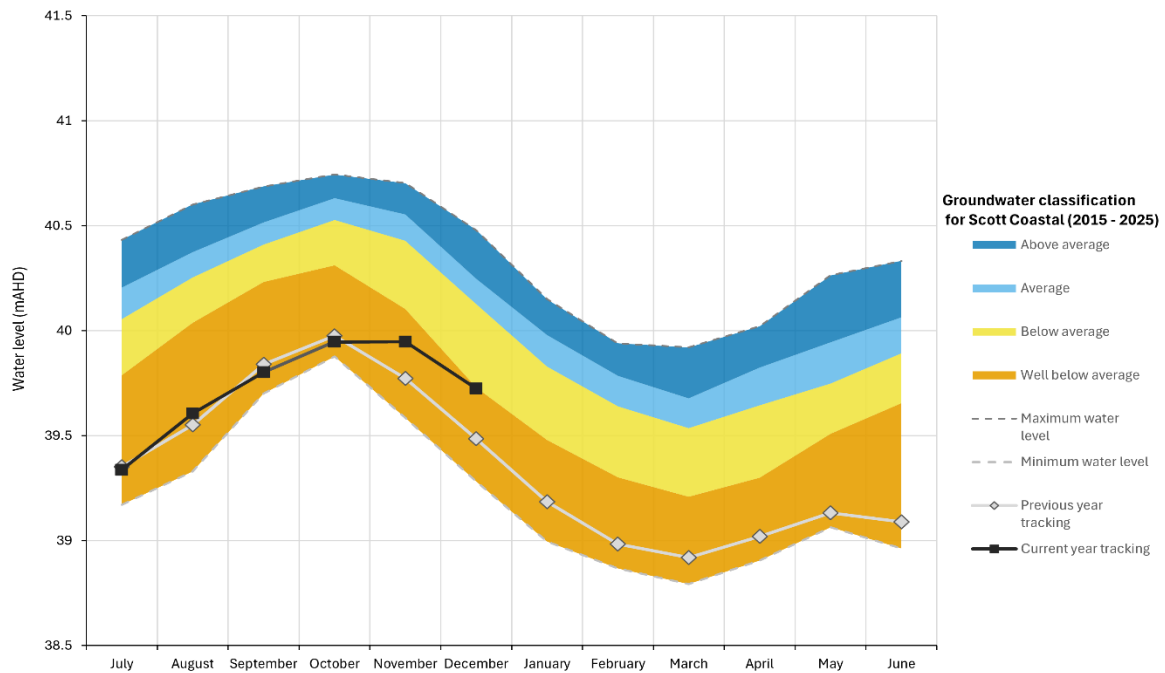


Product of the Department of Water and Environmental Regulation

Scott Coastal

Groundwater levels at the representative bore in Scott Coastal are tracking below average and are higher than groundwater levels recorded in the previous year.

Scott Coastal groundwater tracking - December 2025



Product of the Department of Water and Environmental Regulation