

Yakanarra Layout Plan 1 - Living Area

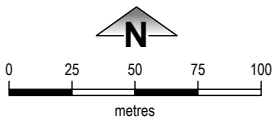
Amendment 5



WAPC
Western Australian Planning Commission

This Layout Plan does not constitute development approval. It is the responsibility of the developer to ensure that all relevant consents, approvals, licences and clearances are in place prior to commencing physical works on the site. Organisations responsible for such matters may include land owner, local government, incorporated community council, native title representative body, native title prescribed body corporate, Aboriginal Cultural Materials Committee, Environmental Protection Authority, state and federal government departments, and other relevant regulatory authorities. Go to the [PlanWA interactive planning map](#) to view Layout Plans with other spatial layers.

Layout Plan 1 endorsement	
Community	1 May 2005
Local Government	1 September 2005
Traditional Owners	-
WAPC	1 March 2006
Amendment 5 endorsement	
WAPC	10 December 2025



projection : MGA zone 51, GDA 2020

Layout Plan map-sets and background reports

© 2023 Western Australian Land Information Authority Location information data licensed from Western Australian Land Information Authority (WALIA) trading as Landgate. Copyright in the location information data remains with WALIA. WALIA does not warrant the accuracy or completeness of the location information data or its suitability for any particular purpose. Base information and aerial imagery supplied by the Western Australian Land Information Authority SLIP 1447-2023-1. Cadastre, December 2025. Aerial image, April 2024. Drinking water source protection area derived from the Yakanarra Community Drinking Water Source Protection Plan December 2009 commissioned by the Department of Communities (Housing). Settlement layout lots are not derived from calculated dimensions. Map document : YakanarraLP1_Amd5.aprx Produced by Data Analytics, Department of Planning, Lands & Heritage on behalf of the Western Australian Planning Commission. © Western Australian Planning Commission 2025

Land Use (see [Aboriginal Settlements Guideline](#))

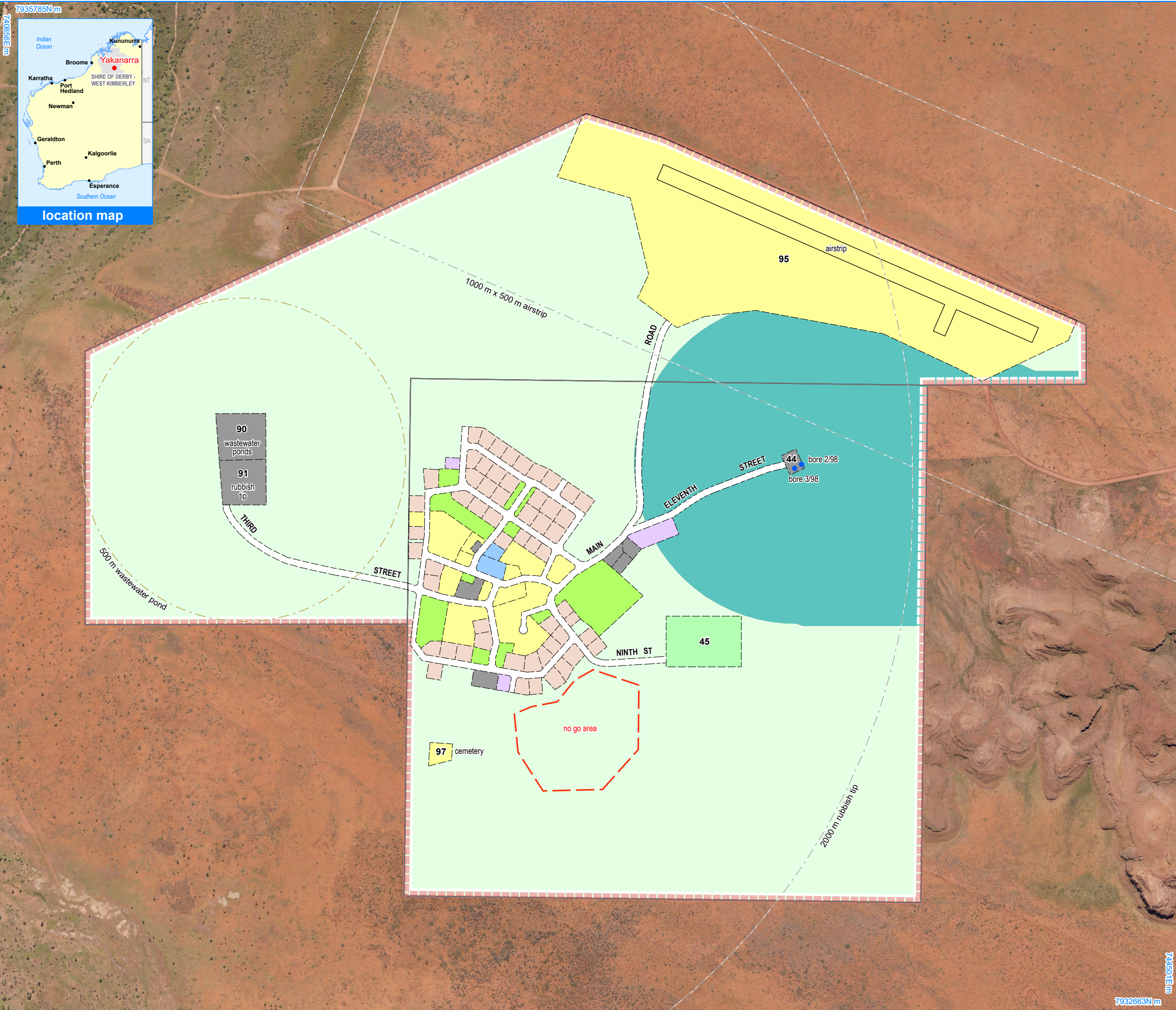
road reserve	road, essential service distribution network
residential	house, residential quarters
visitor camping	camping ground, traditional law and culture
community	child care premises, civic use, corrective institution, educational establishment, health care centre, worship building
open space	agriculture - extensive, essential service distribution network, traditional law and culture
rural	rural pursuit, agriculture - extensive, animal husbandry - intensive, agriculture - intensive, essential service distribution network
recreation	recreation, essential service distribution network
pedestrian access way	essential service distribution network, pedestrian access way
drinking water source protection area	any use permitted under the Drinking Water Source Protection Plan
waterway	agriculture - extensive, agriculture - intensive, traditional law and culture
commercial	art centre, caravan park, motel, office, service station, shop, tourism accommodation
industrial	fuel depot, industry, motor vehicle repair, storage, vehicle wrecking
public utility	electricity supply, essential service distribution network, drinking water supply, wastewater disposal, telecommunications, rubbish disposal

Land Administration

	cadastre
	lodged cadastral
	settlement zone
	settlement layout (SL) lot & SL-lot number

Exclusion Boundary

	fuel storage
	industry
	no-go area
	power station
	wastewater

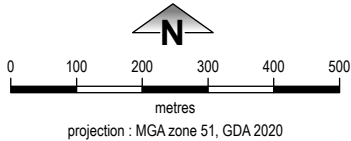


- Features**
- production bore
 - as-constructed miscellaneous feature

- Land Administration**
- cadastre
 - lodged cadastre
 - settlement zone
 - settlement layout (SL) lot & SL-lot number

- Exclusion Boundary**
- no-go area
 - utility
 - wastewater

road reserve	road, essential service distribution network
residential	house, residential quarters
visitor camping	camping ground, traditional law and culture
community	child care premises, civic use, corrective institution, educational establishment, health care centre, worship building
open space	agriculture - extensive, essential service distribution network, traditional law and culture
rural	rural pursuit, agriculture - extensive, animal husbandry - intensive, agriculture - intensive, essential service distribution network
recreation	recreation, essential service distribution network
pedestrian access way	essential service distribution network, pedestrian access way
drinking water source protection area	any use permitted under the Drinking Water Source Protection Plan
waterway	agriculture - extensive, agriculture - intensive, traditional law and culture
commercial	art centre, caravan park, motel, office, service station, shop, tourism accommodation
industrial	fuel depot, industry, motor vehicle repair, storage, vehicle wrecking
public utility	electricity supply, essential service distribution network, drinking water supply, wastewater disposal, telecommunications, rubbish disposal



This Layout Plan does not constitute development approval. It is the responsibility of the developer to ensure that all relevant consents, approvals, licences and clearances are in place prior to commencing physical works on the site. Organisations responsible for such matters may include land owner, local government, incorporated community council, native title representative body, native title prescribed body corporate, Aboriginal Cultural Materials Committee, Environmental Protection Authority, state and federal government departments, and other relevant regulatory authorities. Go to the [PlanWA interactive planning map](#) to view Layout Plans with other spatial layers.

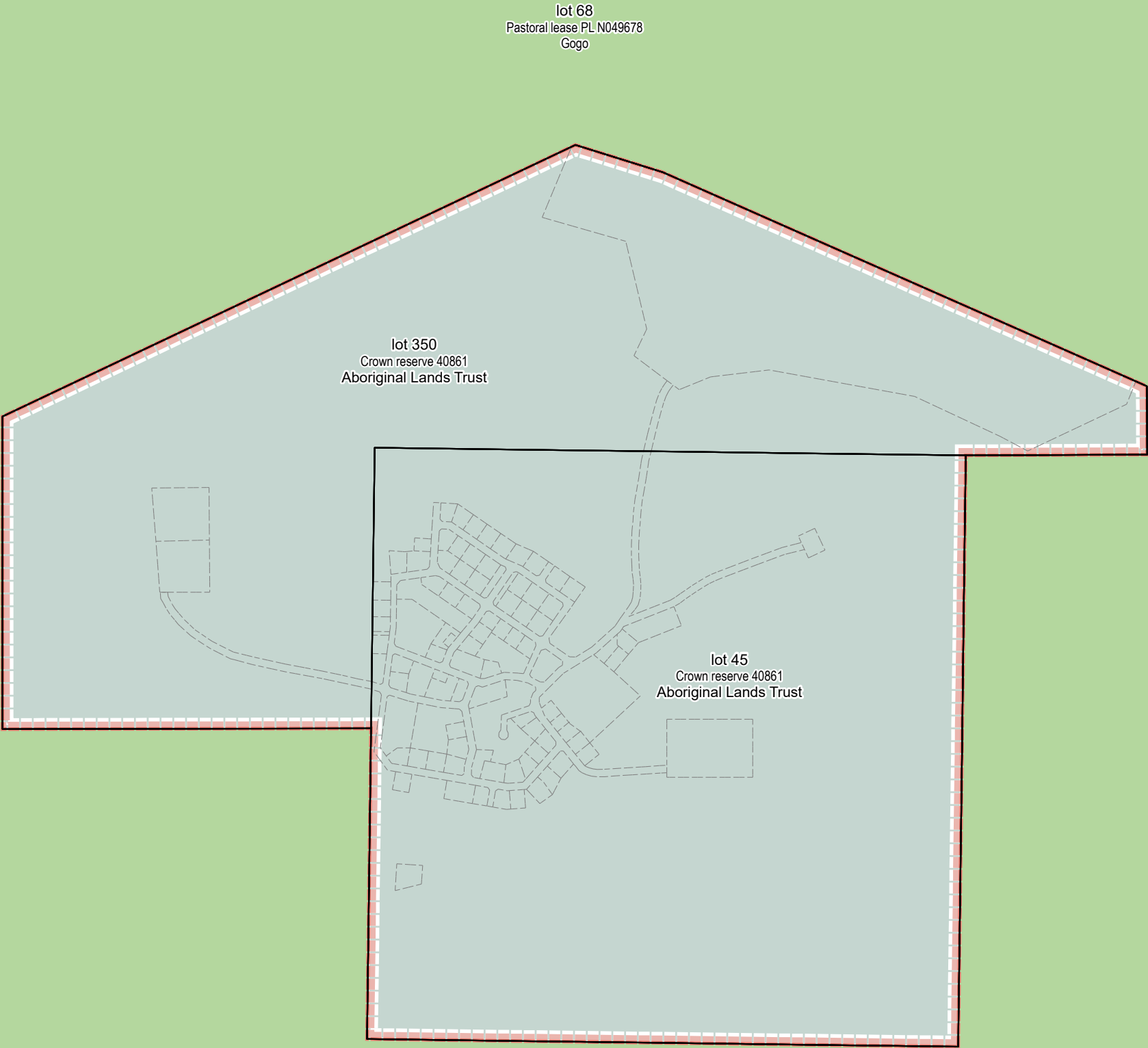
© 2023 Western Australian Land Information Authority Location information data licensed from Western Australian Land Information Authority (WALIA) trading as Landgate. Copyright in the location information data remains with WALIA. WALIA does not warrant the accuracy or completeness of the location information data or its suitability for any particular purpose. Base information and aerial imagery supplied by the Western Australian Land Information Authority SLIP 1447-2023-1. Cadastre date December 2025. April 2024 aerial image. Drinking water source protection area derived from the Yakanarra Community Drinking Water Source Protection Plan December 2009, commissioned by the Department of Communities. **Settlement layout lots are not derived from calculated dimensions.**

Map document : YakanarraLP1_Amd5.aprx
Produced by Data Analytics, Department of Planning, Lands & Heritage on behalf of the Western Australian Planning Commission.
© Western Australian Planning Commission 2025



Layout Plan 1 endorsement	
Community	1 May 2005
Local Government	1 September 2005
Traditional Owners	-
WAPC	1 March 2006
Amendment 5 endorsement	
WAPC	10 December 2025

7936097N m
745033E m

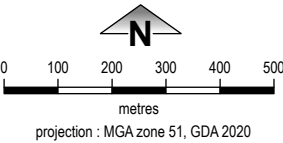


Yakanarra Layout Plan 1 - Land Tenure Amendment 5

Land Tenure	
crown reserve	
crown reserve	- Aboriginal Lands Trust
Department of Biodiversity, Conservation & Attractions managed	
freehold	
leasehold	
other	
pastoral lease	
pastoral lease	- Aboriginal Lands Trust
unallocated crown land	
water reserve	

Geodetic Survey Marks	
↑	bench mark
⊙	standard survey mark

Land Administration	
▭	cadastre
▭	lodged cadastre
▭	settlement zone
▭	settlement layout (SL) lot



This Layout Plan does not constitute development approval. It is the responsibility of the developer to ensure that all relevant consents, approvals, licences and clearances are in place prior to commencing physical works on the site. Organisations responsible for such matters may include land owner, local government, incorporated community council, native title representative body, native title prescribed body corporate, Aboriginal Cultural Materials Committee, Environmental Protection Authority, state and federal government departments, and other relevant regulatory authorities. Go to the [PlanWA interactive planning map](#) to view Layout Plans with other spatial layers.

© 2023 Western Australian Land Information Authority Location information data licensed from Western Australian Land Information Authority (WALIA) trading as Landgate. Copyright in the location information data remains with WALIA. WALIA does not warrant the accuracy or completeness of the location information data or its suitability for any particular purpose. Base information and aerial imagery supplied by the Western Australian Land Information Authority SLIP 1447-2023-1. Cadastre date December 2025.

Settlement layout lots are not derived from calculated dimensions.

Map document : YakanarraLP1_Amd5.aprx

Produced by Data Analytics, Department of Planning, Lands & Heritage on behalf of the Western Australian Planning Commission.

© Western Australian Planning Commission 2025



Layout Plan 1 endorsement	
Community	1 May 2005
Local Government	1 September 2005
Traditional Owners	-
WAPC	1 March 2006
Amendment 5 endorsement	
WAPC	10 December 2025

745033E m
7932296N m