

LEGEND

LOCAL SCHEME RESERVES

Ocean	Public Purposes : Hospital Site
Public Purposes	Public Purposes : Museum
Public Purposes : Car Park	Public Purposes : Railway Reserves
Public Purposes : Cemetery	Public Purposes : School Site
Public Purposes : Community Hall	Public Purposes : Sewerage Treatment Plant
Public Purposes : Community Purposes	Public Purposes : Water
Public Purposes : Council Offices	Public Purposes : Water Authority
Public Purposes : Drain	Public Purposes : Water Tank
Public Purposes : Fire Brigade	Recreation
Public Purposes : Government Offices	

LOCAL SCHEME ZONES

Bushland Protection	Service Commercial
Conservation	Special Use
Industrial Development	Tourism
Light Industry	Urban Development
Residential	Viticulture/Tourism
Rural	Local Centre
Rural Landscape	District Centre
Rural Residential	Regional Centre

OTHER CATEGORIES

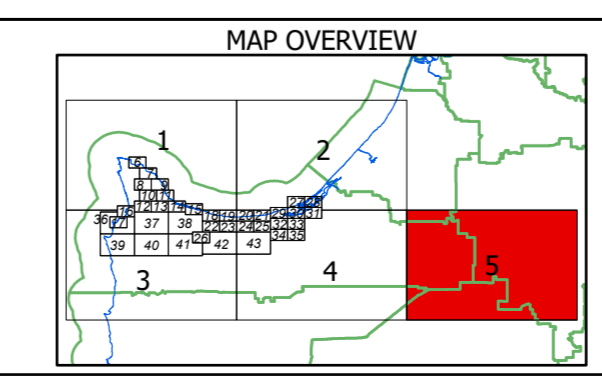
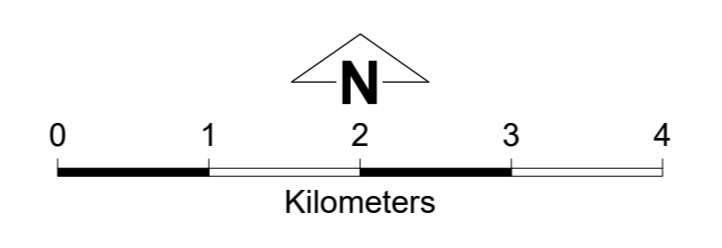
(see scheme text for additional information)

Scheme Boundary	Building Height Area 4 Storey
Local Government Boundary	Building Height Area 5 Storey
Additional uses	Coastal Management Area
Special use area	Development Investigation Area
R Codes	Drive Through Facility Control
Broadwater Precinct	Environmental Conditions
Busselton Precinct	Floodway Area
Dunsborough and Quindalup Precinct	Landscape Value Area
Geographe Precinct	Port Geographe Development Area
Rural Remainder Precinct	Special Character Area
Yalyalup	Special Provision Area
Old Broadwater Farm	Waste Water Buffer Area
Vasse	Waste Water Exclusion Area
Dunsborough Lakes	Wetland Area
Airport Protection Area	No Zone
	Oceans/Waterways

This electronic planning map has been prepared and made available for public inspection by the Western Australian Planning Commission pursuant to section 267B of the Planning and Development Act 2005. Whilst all care has been taken to accurately portray the original map, spatial data can be subject to modification over time. If you wish to use a copy of this map in any proceedings, a copy certified by the Commission (or its delegates) under section 267C is evidence of the contents of the electronic map or a part of the map. If you have questions about the publication or certification of a map, or suspect any omissions or errors in this electronic planning map, please advise the Department of Planning, Lands and Heritage at spatialdata@dph.wa.gov.au

© 2026 Western Australian Land Information Authority
 Location information data licensed from Western Australian Land Information Authority (WALIA) trading as Landgate.
 Copyright in the location information data remains with WALIA.
 WALIA does not warrant the accuracy or completeness of the location information data or its suitability for any particular purpose.
 Produced by Data Analytics,
 Department of Planning, Lands and Heritage.

City of Busselton
 Local Planning Scheme No. 21
 (District Scheme)



Authorised: T.Servaas
 Plot Date: 13 May 2026
 G.Gazette: Wednesday, 15 October 2014

Local Planning Scheme Map No. 5 of 43
 MAP: Yoganup East Locality

City of Busselton
 Local Planning Scheme No. 21
 (District Scheme)