

South Coast

Rainfall and groundwater

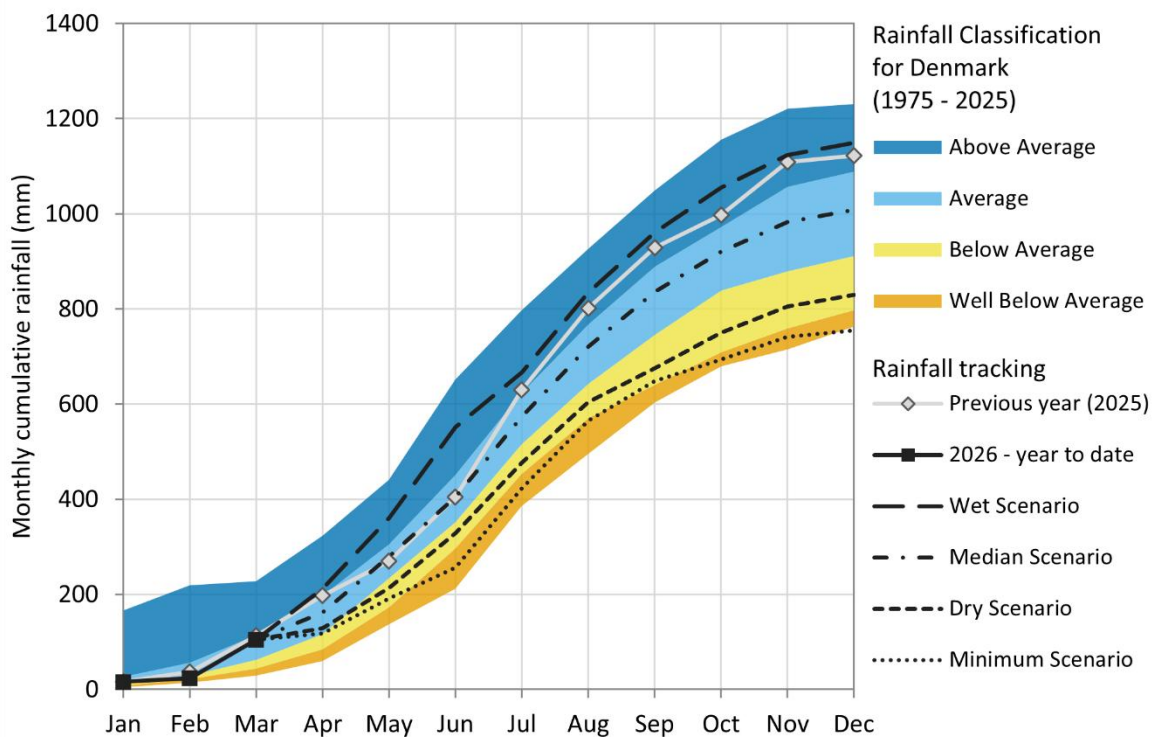
Rainfall

Denmark

The graph shows how the total amount of rainfall in a particular place compares to previous years – specifically, to the period from 1975 to last year. The graph also shows the potential rainfall for the rest of the year based on a few scenarios.

Rainfall at Denmark is currently tracking in the average category.

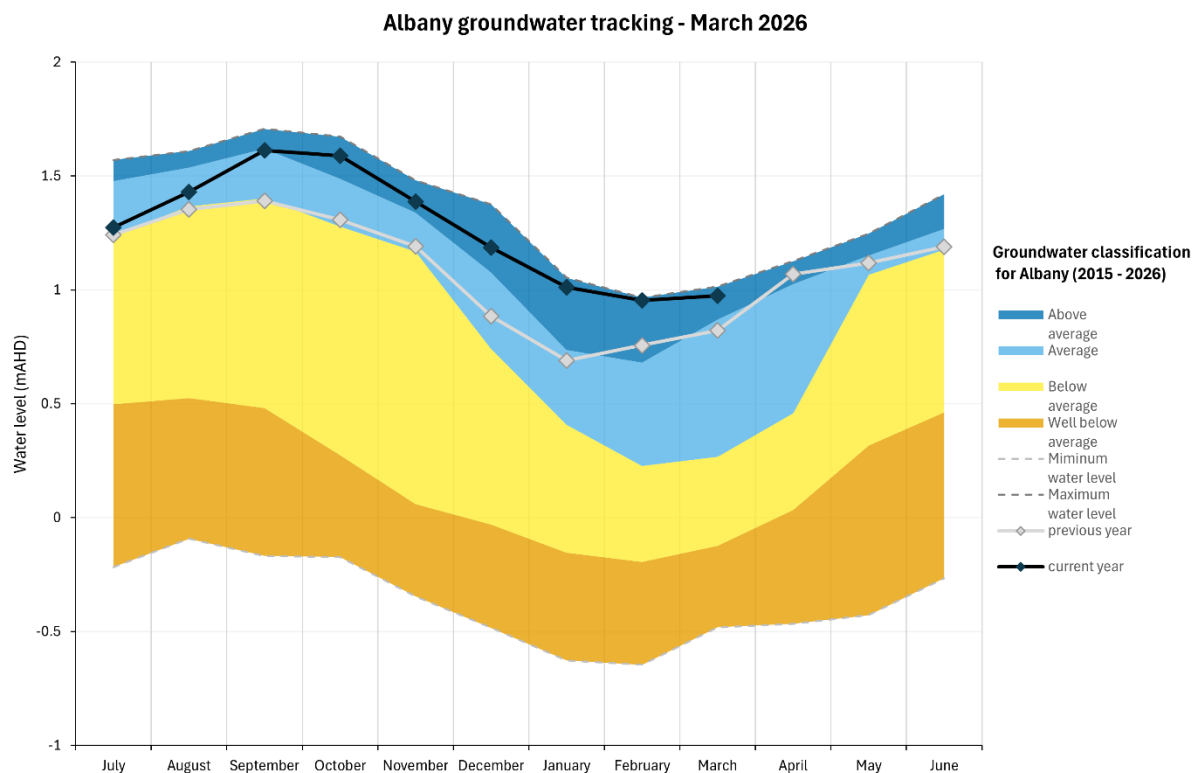
Denmark rainfall - March 2026



Groundwater

Albany

Groundwater levels at the representative bore in Albany are tracking above average and are higher than groundwater levels recorded in the previous year.



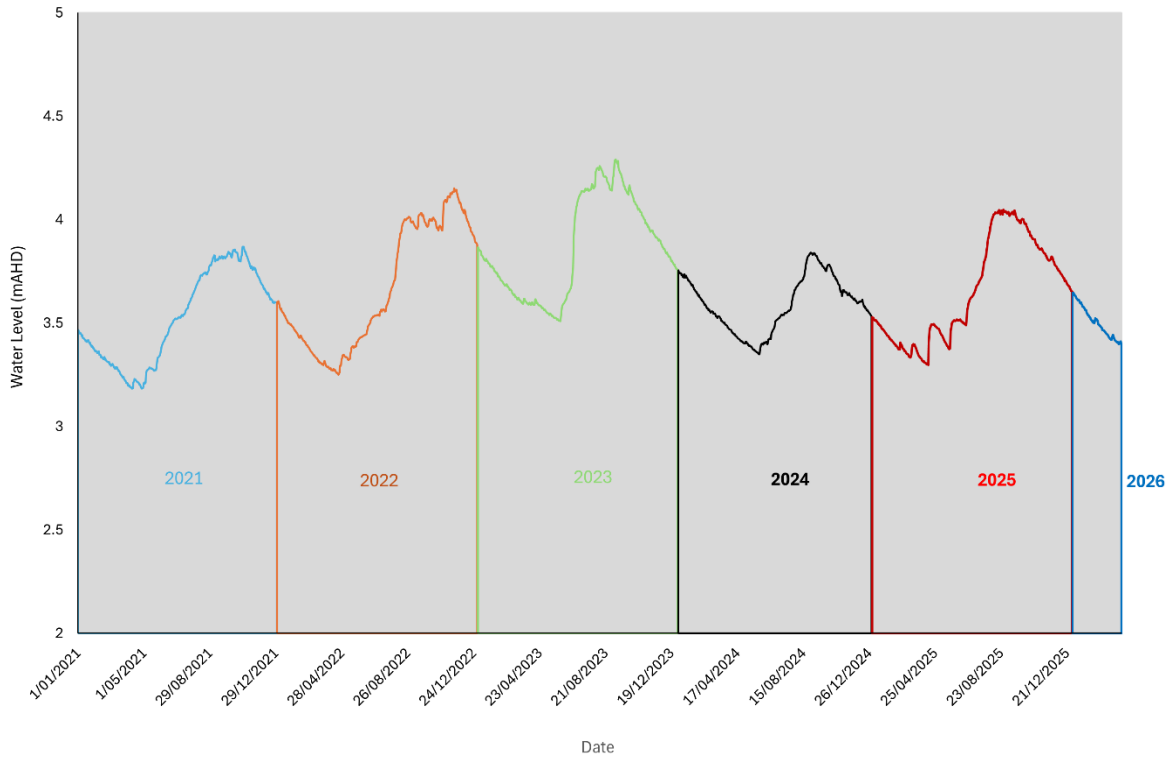
Product of the Department of Water and Environmental Regulation

Esperance

Groundwater levels at the representative bore in Esperance are tracking like groundwater levels recorded during the same month in the previous year. The data available at the representative bore in Esperance does not have enough long-term data to create a graph with historical averages. Instead, groundwater levels over time have been used.

In 2020 we released the [Esperance groundwater allocation plan: Evaluation statement 2012–2020](#), which showed how groundwater responded to use, climate change and less recharge.

Esperance groundwater tracking - March 2026



Product of the Department of Water and Environmental Regulation