

South West

Rainfall and groundwater

Rainfall

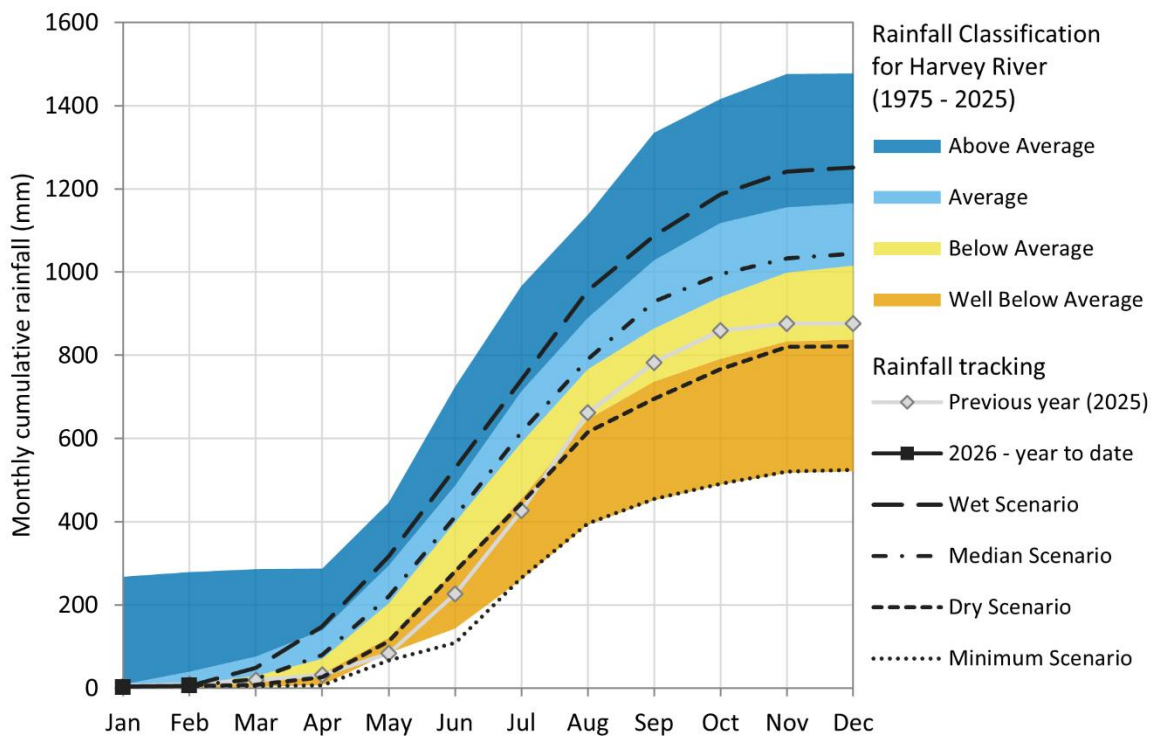
Harvey River, Pemberton

The graphs show how the total amount of rainfall in a particular place compares to previous years – specifically, to the period from 1975 to last year. The graphs also show the potential rainfall for the rest of the year based on a few scenarios.

Harvey River

Rainfall in Harvey is currently tracking in the below average category. Rainfall is typically low in summer.

Harvey River rainfall - February 2026

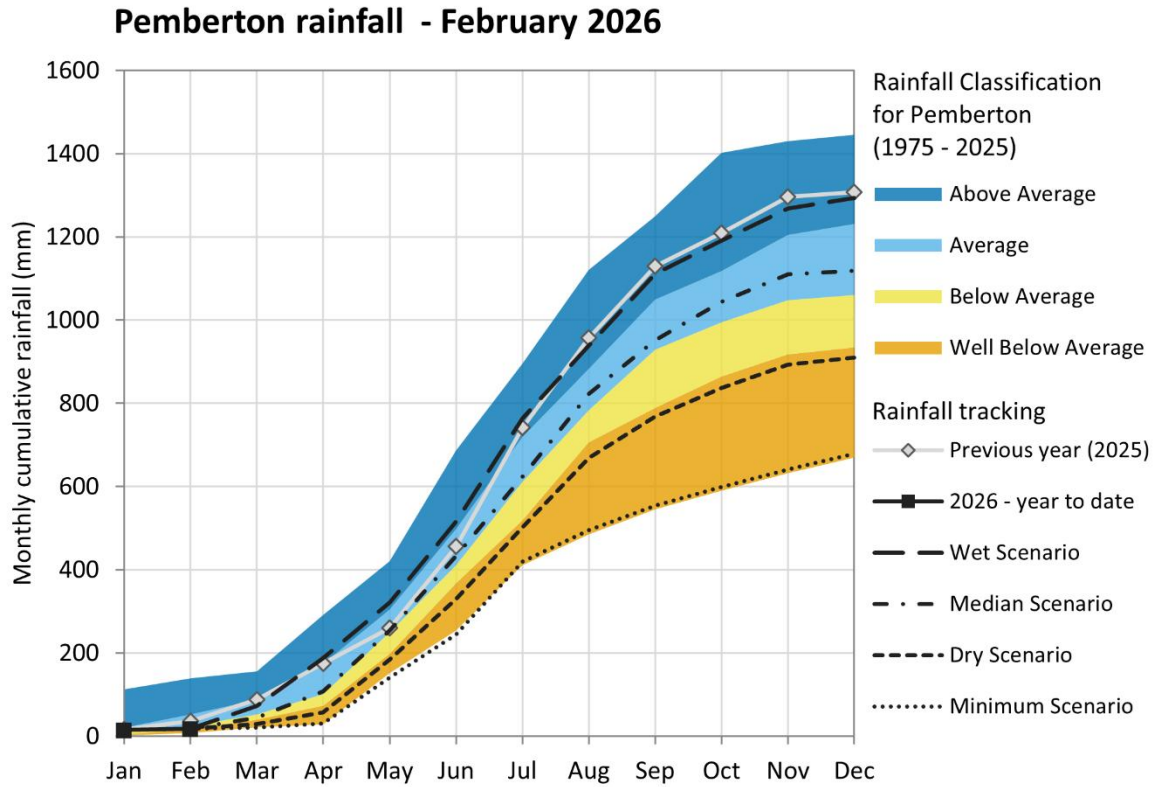


Government of Western Australia
Department of Water and Environmental Regulation

Product of the Department of Water and Environmental Regulation

Pemberton

Rainfall in Pemberton is tracking in the below average category. Rainfall is typically low in summer.



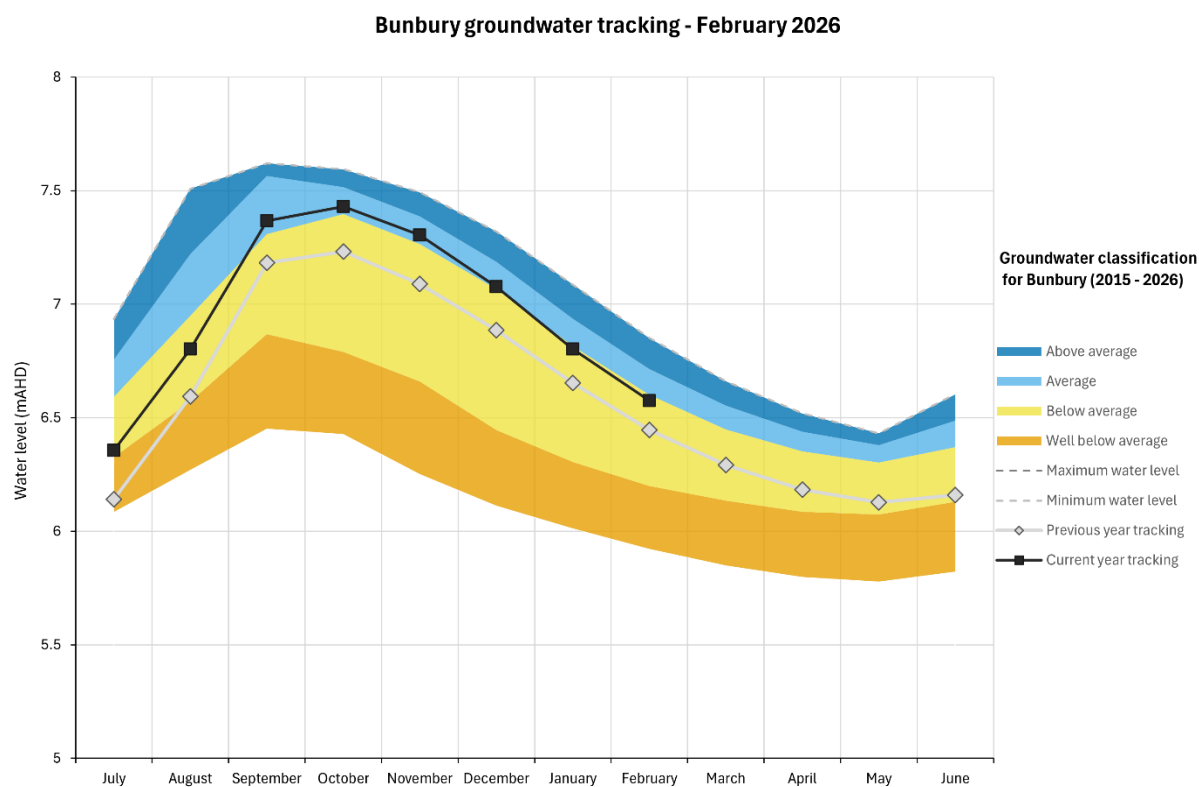
Government of Western Australia
Department of Water and Environmental Regulation

Product of the Department of Water and Environmental Regulation

Groundwater

Bunbury

In February groundwater levels at the representative bore in Bunbury are tracking below average and are higher than groundwater levels recorded in the previous year.

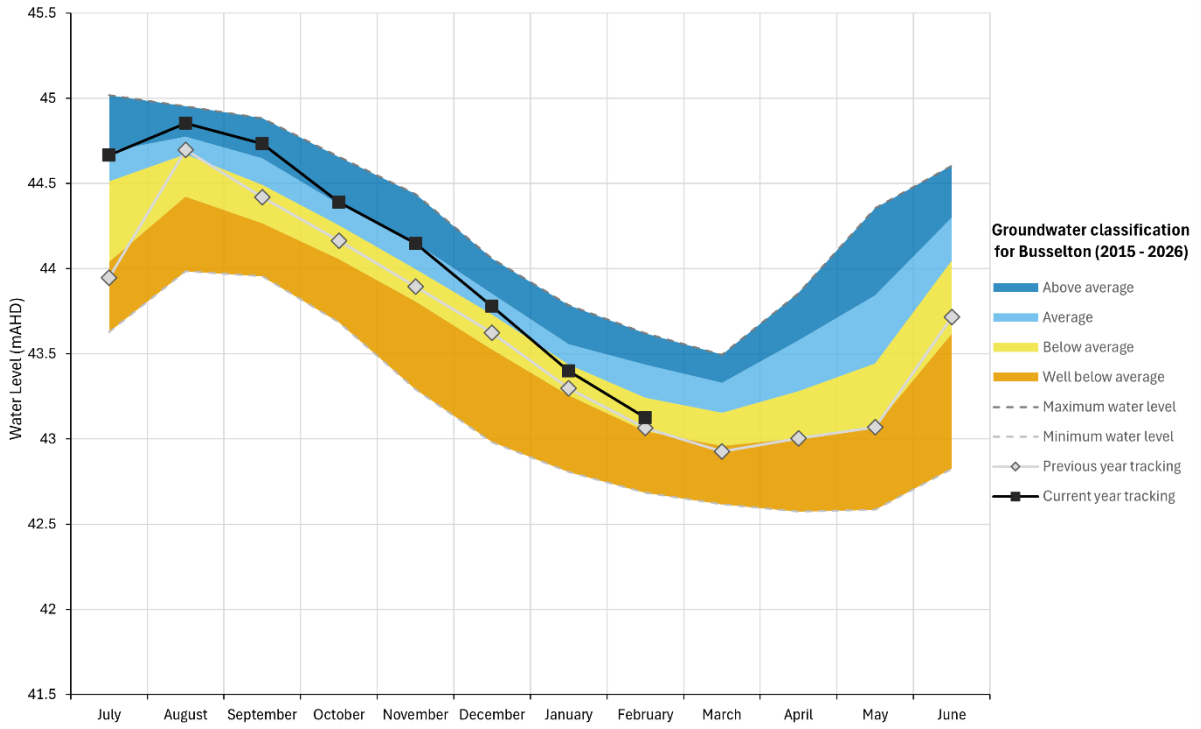


Product of the Department of Water and Environmental Regulation

Busselton

Groundwater levels at the representative bore in Busselton are tracking below average and are higher than groundwater levels recorded in the previous year.

Busselton groundwater tracking - February 2026

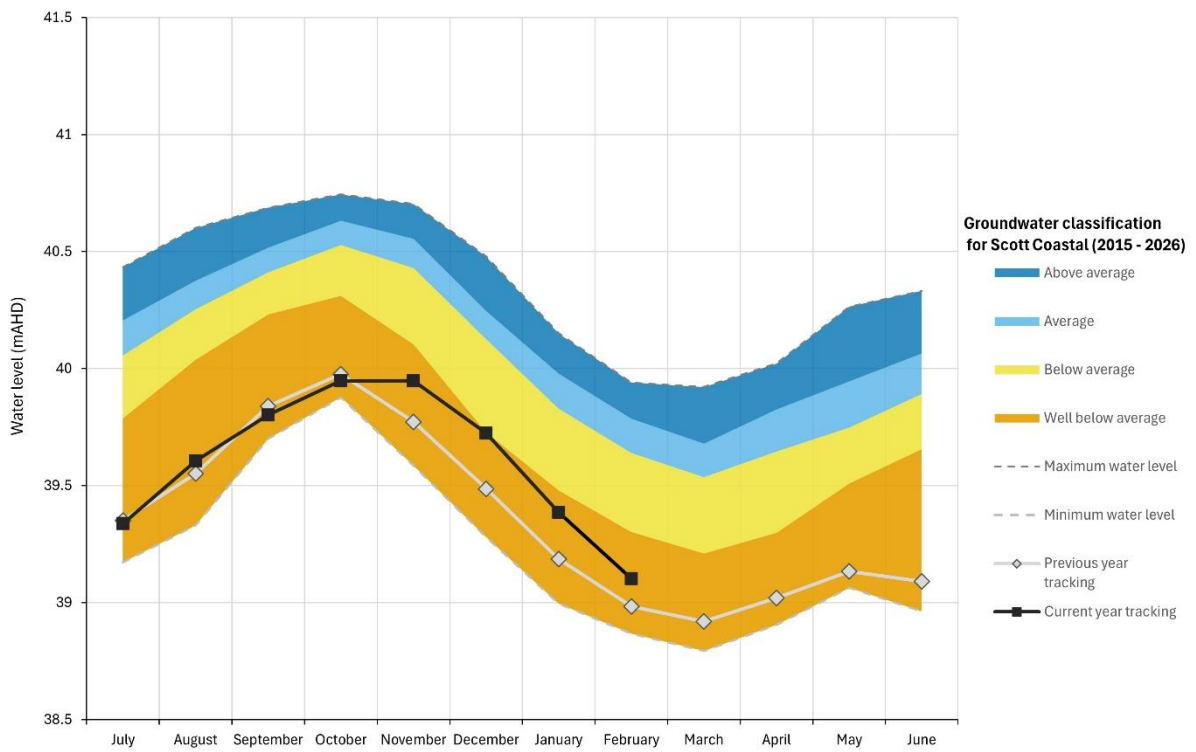


Product of the Department of Water and Environmental Regulation

Scott Coastal

Groundwater levels at the representative bore in Scott Coastal are tracking well below average and are higher than groundwater levels recorded in the previous year.

Scott Coastal groundwater tracking - February 2026



Product of the Department of Water and Environmental Regulation