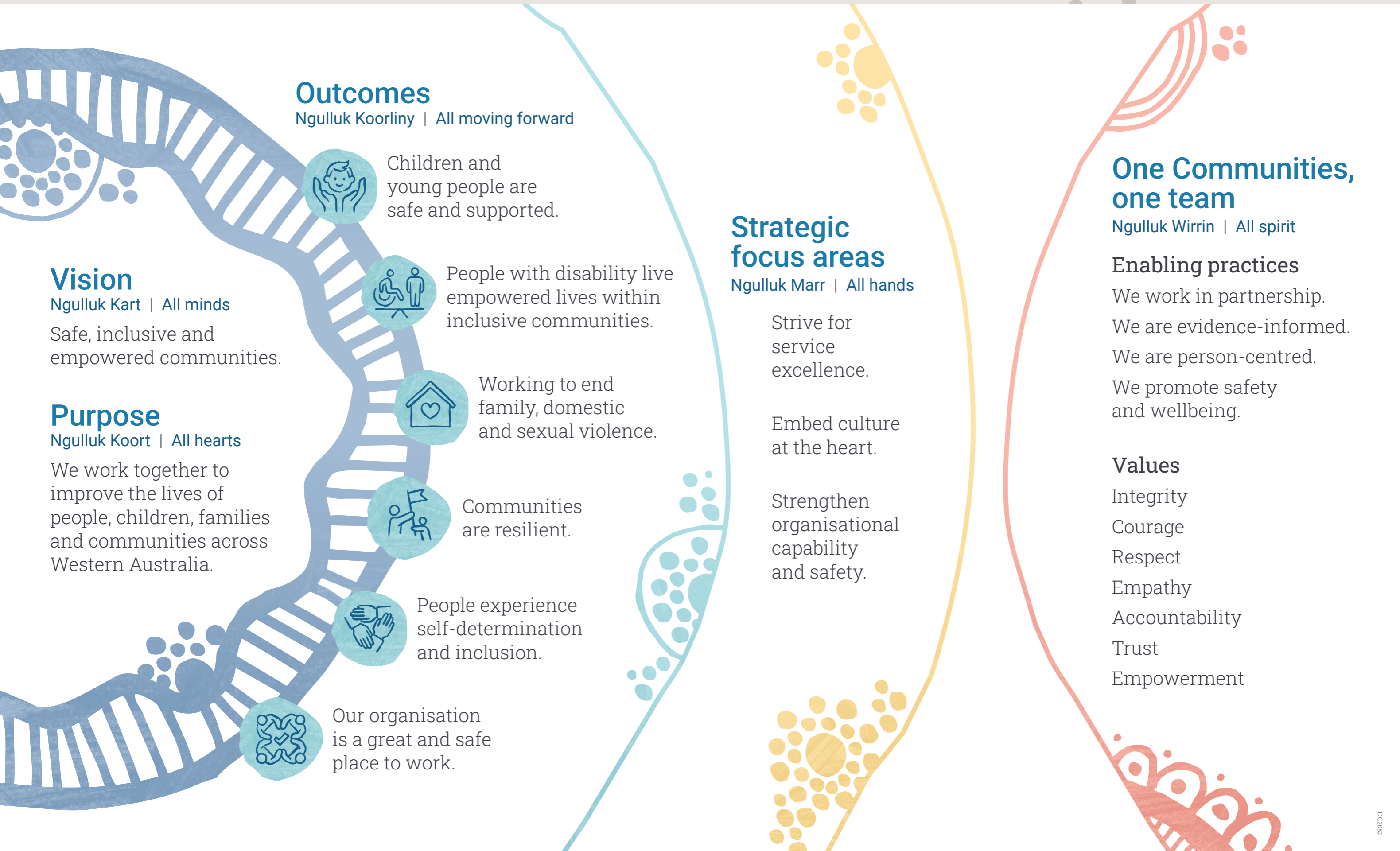




Strategic Plan 2026–30

To read the Strategic Plan 2026–30 in full, please visit:
www.communities.wa.gov.au/strategic-plan



Outcomes

Ngulluk Koorliny | All moving forward



Children and young people are safe and supported.



People with disability live empowered lives within inclusive communities.



Working to end family, domestic and sexual violence.



Communities are resilient.



People experience self-determination and inclusion.



Our organisation is a great and safe place to work.

Vision

Ngulluk Kart | All minds

Safe, inclusive and empowered communities.

Purpose

Ngulluk Koort | All hearts

We work together to improve the lives of people, children, families and communities across Western Australia.

Strategic focus areas

Ngulluk Marr | All hands

Strive for service excellence.

Embed culture at the heart.

Strengthen organisational capability and safety.

One Communities, one team

Ngulluk Wirrin | All spirit

Enabling practices

- We work in partnership.
- We are evidence-informed.
- We are person-centred.
- We promote safety and wellbeing.

Values

- Integrity
- Courage
- Respect
- Empathy
- Accountability
- Trust
- Empowerment