



Shire of Boyup Brook

non-potable strategic community water supplies plan

Department of Water and Environmental Regulation
Prime House, 8 Davidson Terrace
Joondalup Western Australia 6027
Locked Bag 10 Joondalup DC WA 6919

Phone: 08 6364 7000

Fax: 08 6364 7001

National Relay Service 13 36 77

wa.gov.au/dwer

© Government of Western Australia

June 2026

This work is copyright. You may download, display, print and reproduce this material in unaltered form only (retaining this notice) for your personal, non-commercial use or use within your organisation. Apart from any use as permitted under the *Copyright Act 1968*, all other rights are reserved. Requests and inquiries concerning reproduction and rights should be addressed to the Department of Water and Environmental Regulation.

Acknowledgements

Throughout the development of this Strategic Community Water Supply plan several people from the Rural Water Planning section in the Department of Water and Environment Regulation (the Department) were involved:

Sherrie Anderson, Rosie Bell, Tracy Calvert, Mell Culhane, Elizabeth Tanner, Sandy Turton-Parkinson and Renae Thorpe.

The Department would also like to thank the Shire of Boyup Brook and the Water Corporation for their advice, support and assistance during the preparation of this plan.

For more information about this plan, contact Rural Water Planning on 1800 780 300.

Cover photograph: Flax Mill Water Tanks, Shire of Boyup Brook

Disclaimer

This document has been published by the Department of Water and Environmental Regulation. Any representation, statement, opinion or advice expressed or implied in this publication is made in good faith and on the basis that the Department of Water and Environmental Regulation and its employees are not liable for any damage or loss whatsoever which may occur as a result of action taken or not taken, as the case may be in respect of any representation, statement, opinion or advice referred to herein. Professional advice should be obtained before applying the information contained in this document to particular circumstances.

This publication is available at our website wa.gov.au/dwer or for those with special needs it can be made available in alternative formats such as audio, large print, or Braille.

Contents

Summary.....	1
Introduction	2
Strategic community water supplies and agricultural area dams.....	3
Shire of Boyup Brook map.....	4
Strategic community water supply access	5
Shire of Boyup Brook SCWS sites summary	6
Shire Depot dam	7
Shire Depot dam – site images	7
Shire Depot dam – site description	8
Dinninup fast-fill emergency water station	9
Dinninup fast-fill emergency water station – site images	9
Dinninup fast-fill emergency water station – site description	10
Flax Mill tanks	11
Flax Mill tanks – site images	11
Flax Mill tanks – site description	12
Railway Reserve dam	13
Railway Reserve dam – site images	13
Railway Reserve dam – site description.....	14
Reservoir Road dam	15
Reservoir Road dam – site images	15
Reservoir Road dam – site description	16
Sporting Rec dam.....	17
Sporting Rec dam – site images	17
Sporting Rec dam – site description.....	18
Wilga town dam.....	19
Wilga town dam – site images	19
Wilga town dam – site description.....	20
Mayanup Hall fire emergency tank	21
Mayanup Hall fire emergency tank – site images	21
Mayanup Hall fire emergency tank – site description	22
Tonebridge fire emergency tank.....	23
Tonebridge fire emergency tank – site images.....	23
Tonebridge fire emergency tank – site description	24
Wilga Hall fire emergency tank.....	25
Wilga Hall fire emergency tank – site images.....	25
Wilga Hall fire emergency tank – site description	26
Wilga Old Railway dam	27
Wilga Old Railway dam – site images	27
Wilga Old Railway dam – site description	28
Boyup Brook Airstrip tank.....	29
Boyup Brook Airstrip tank – site images.....	29
Boyup Brook Airstrip Tank – site description.....	30
Glossary.....	31

Summary

Water supply planning is essential in rural areas and requires collaboration, involvement and participation from all stakeholders, including farmland communities, local governments and State Government agencies as part of an integrated approach to sustainable water supply for the future.

This plan provides information for the Shire and farmers on the location of strategic community water supplies (SCWS). It advises how to access non-potable water for emergency stock watering and firefighting purposes, including the facilities available at each site.

Introduction

Over the past 40 years, recurrent water supply problems have affected the dryland agricultural region. Emerging climate changes are likely to increase the occurrences of low rainfall years, resulting in water shortages and restrictions in rural communities.

As farmers face long-term water security challenges, they are encouraged to proactively develop and maintain on-farm water infrastructure to better prepare for dry periods.

Rural water planning recognises the importance of preparing for these events to increase the opportunities for delivering an assured water supply to farmland communities in the dryland agricultural areas of Western Australia (WA).

SCWS planning is one of the key roles of the Department of Water and Environmental Regulation's (the Department's) rural water program. The aim is to safeguard dryland agricultural areas wherever possible against serious water deficiencies.

While landholder self-sufficiency must remain the primary objective, the rural water program recognises the importance of emergency off-farm water supplies to farming communities. It also builds on the SCWS network across the dryland agricultural area through the Community Water Supplies Partnership (CWSP) program and the Agricultural Areas (AA) dam works program.

Both programs establish and improve non-potable water supplies to ensure water is available for emergency livestock watering and firefighting. The CWSP program aims to reduce reliance on potable scheme water supplies for non-potable needs, and to increase water availability for public amenities, such as sportsgrounds.

This SCWS plan has been compiled for the Shire of Boyup Brook to provide a clear description of each of the SCWS in the Shire available for firefighting purposes, and to farmers and farming communities in times of emergency.

Strategic community water supplies and agricultural area dams

A network of SCWS has been developed across WA's dryland agricultural areas to provide an important source of non-potable water for farming and firefighting needs.

These supplies are for emergency use for firefighting or in times when low rainfall causes on-farm supplies to become depleted and farmers need to travel to access water for livestock and essential farming purposes.

Vesting of the strategic dams and bores in each local government area varies, with some sites owned by government agencies (including the Department), Water Corporation, the local government itself, or by private entities where an agreement has been made to allow access.

It is important that these water supplies are carefully managed to ensure water is available during times of emergency.

The Department keeps in regular contact with rural communities to monitor the condition of SCWS and identify and address any maintenance issues.

Each year, the Department's rural water program undertakes works to maintain and upgrade sites vested with it and sites in priority areas vulnerable to dry conditions.

AA dams have been developed since the early 1990s to provide water and support the growth of farming in the dryland agricultural area. There are about 480 of the original 681 AA dams that range from high value to no value in terms of their condition and serviceability.

SCWS are a subset of the AA dams that are reliable, in good to excellent repair and retain a high value. The Department uses local government maps to determine which sites are worth upgrading and to identify priority areas to develop new SCWS.

Figure 1 shows the location of the SCWS and AA dams in the Shire of Boyup Brook, with symbols indicating the capacity, vesting and values of each site.

Shire of Boyup Brook map

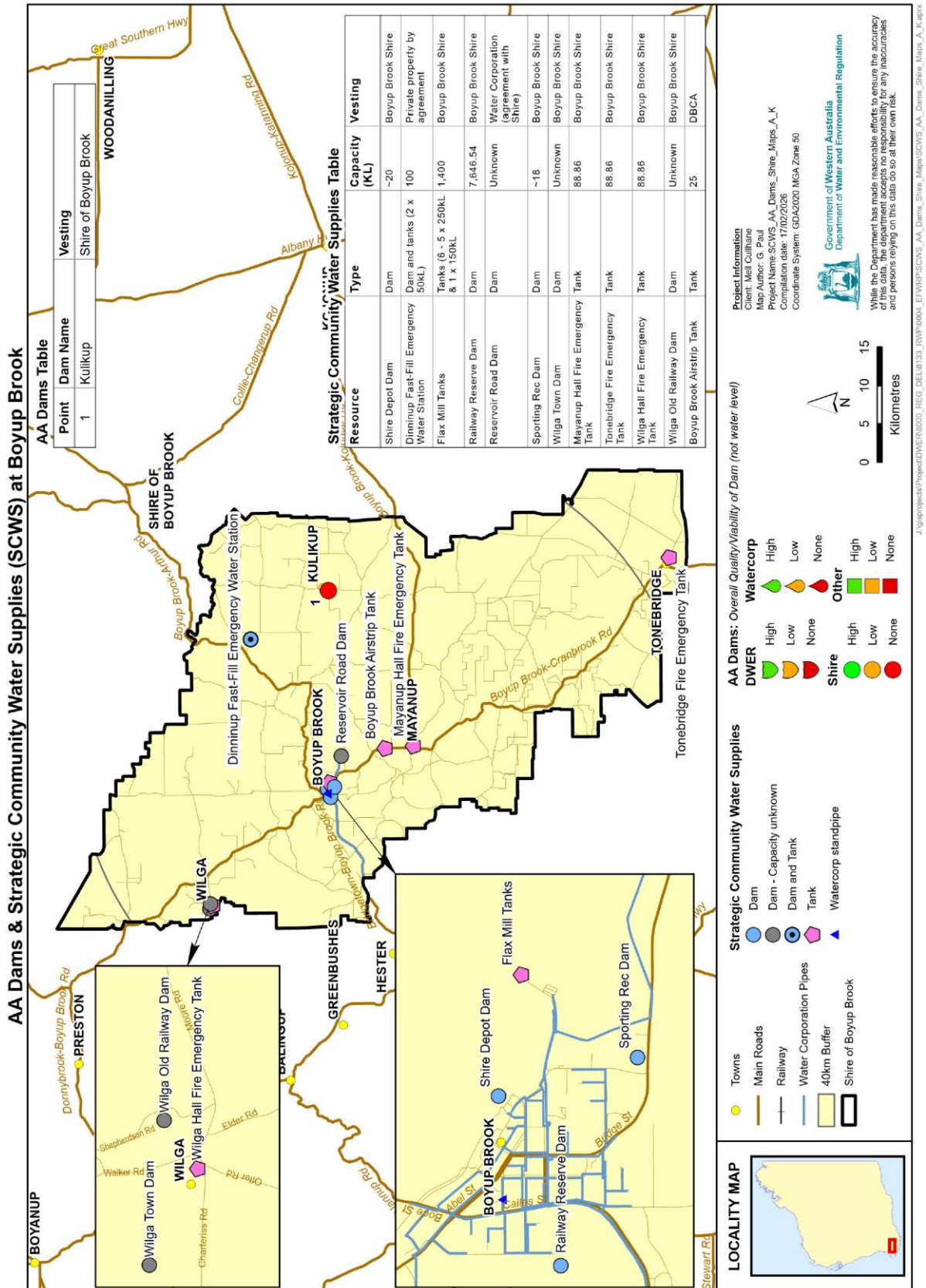


Figure 1 Location of SCWS (at 17 February 2026)

Strategic community water supply access

Overview of different fill points

Each SCWS will have a fill point to allow access to water supply for agricultural purposes. Each fill point will have a camlock fitting. Standard sizes of camlocks include 50 mm (2 inch) and an 80 mm (3 inch) fitting and in some cases a 100 mm (4 inch) connection is fitted for firefighting purposes. These camlock fittings will be available where there is a tank, standpipe, swipe card system or bore fill point. When accessing water directly from dams without a tank storage, you will need to bring your own pump to extract water.

Swipe card systems

Swipe card systems are metered fill points that require a swipe card or to access the water supply. Contact your local government office to obtain a swipe card to access these water supplies.

During emergencies such as bushfires the local government can switch off the swipe card system to allow access without a swipe card. All local fire trucks have swipe card access. The emergency access contact is the Executive Manager of Operations on 0419 777 033.

Farmbots

Some tanks may be fitted with Farmbots, which regularly record the water level and feed the information to a website. Click on the link below (or copy and paste into your browser) to access the website and see water levels in Farmbot-equipped tanks:

app.farmbot.com.au (Login ID: **public.access** Password: **access1**)

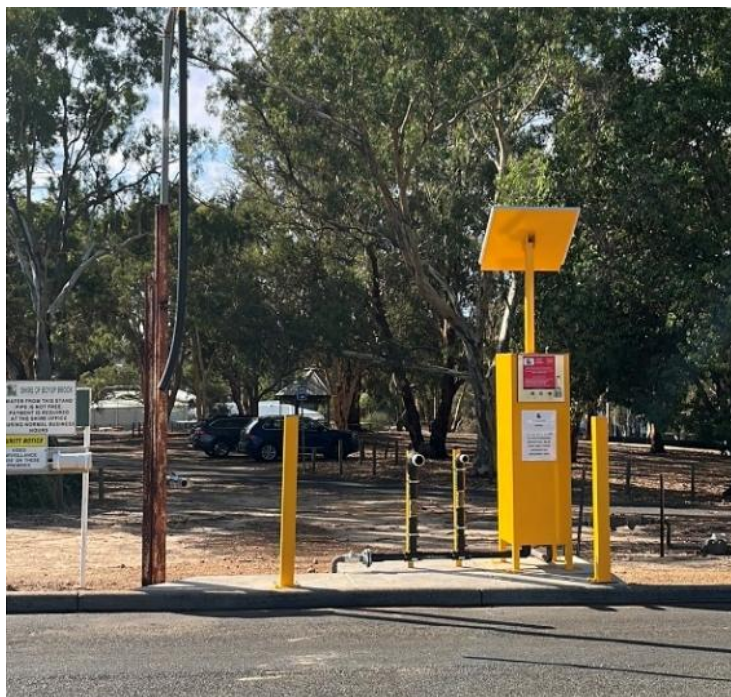
Below are examples of different fill points you may find in the local government area.



Standard tank camlock fitting



Farmbot positioned on top of tank



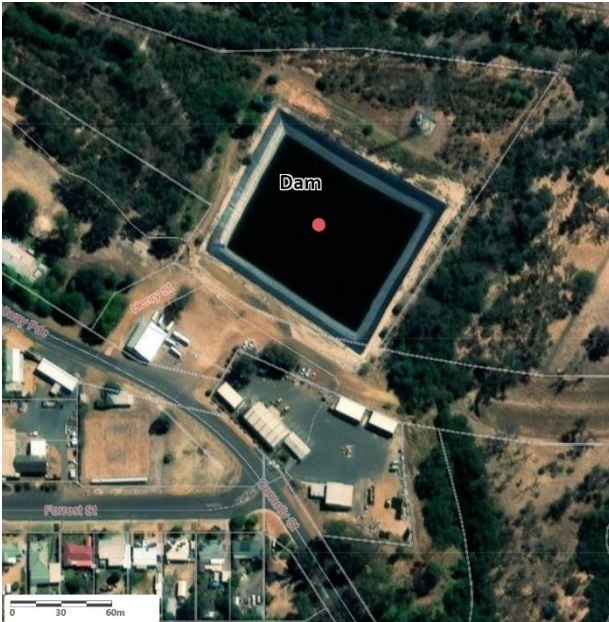
Swipe card stand pipe station

Shire of Boyup Brook SCWS sites summary

Site name	Location
Shire Depot dam	-33.832404, 116.392652 8 Henry Street, Boyup Brook
Dinninup fast-fill emergency water station	-33.74284, 116.60417 Hicks Road, Dinninup (*Rhodes Pastoral Co.)
Flax Mill tanks	-33.833581, 116.401107 Jackson Street, Flax Mill Caravan Park, Boyup Brook
Railway Reserve dam	-33.835802, 116.380477 William Street, Boyup Brook
Reservoir Road dam	-33.849111, 116.438158 Reservoir Road, Boyup Brook (*Water Corp.)
Sporting Rec dam	-33.840374, 116.395224 Beatty Street, Boyup Brook
Wilga town dam	-33.693163, 166.224369 84 Charteriss Road, Wilga
Mayanup Hall fire emergency tank	-33.932468, 116.452475 1 Main Street, Mayanup
Tonebridge fire emergency tank	-34.235064, 116.71783 Boyup Brook-Cranbrook Road, Tonebridge
Wilga Hall fire emergency tank	-33.695047, 116.228874 17 Walker Road, Wilga
Wilga Old Railway dam	-33.693784, 116.231163 Shepherdson Road, Wilga
Boyup Brook Airstrip tank	-33.899013, 116.449194 Boyup Brook-Kojonup Road, Mayanup

Shire Depot dam

Shire Depot dam - site images



Aerial view of dam



Location map



Shire Depot dam



Signage at entrance

Shire Depot dam - site description

Vesting	Shire of Boyup Brook
Purpose	Strategic community water supply for emergency stock water and fire fighting
Associated reserve	N/A
Catchment type	Surface
Catchment area (ha)	Unknown

Location and coordinates

Location: 8 Henry Street, Boyup Brook

Latitude	-33.832404
Longitude	116.392652
Eastings	443830.105
Northings	6256241.291

Water supply and access

Structure type	Dam
Capacity	~20 000m ³
Tank storage	Nil
Standpipe Y/N	Yes
Swipe card Y/N	Yes, contact Shire to register for use
Pump available Y/N	Yes
Heavy vehicle access	Yes
Turnaround area	Yes
Emergency access contacts	Shire Depot – 9765 1220

Dinninup fast-fill emergency water station

Dinninup fast-fill emergency water station - site images



Aerial view of Dinninup dam and tanks



Location map



Dinninup dam



Solar pump



Dam signage



Poly tanks

Dinninup fast-fill emergency water station - site description

Vesting	Private property (D. F.D Rhodes Pty Ltd) on agreement with Shire
Purpose	Strategic community water supply for firefighting water only
Associated reserve	NIL
Catchment type	Earth, spring fed dam
Catchment area (ha)	69.1

Location and coordinates

Location: Hicks Road, Dinninup

Latitude	-33.74284
Longitude	116.60417
Eastings	463348.128
Northings	6266279.862

Water supply and access

Structure type	Dam and Poly tanks
Capacity	2 x 50,000 litre tanks
Camlock coupling sizes	2 x 75mm, 2 x 50mm, 2 x 38mm
Standpipe Y/N	Yes, when used with fast-fill trailer 2000L/90sec
Pump Y/N	Yes, solar
Heavy vehicle access	Yes
Turnaround area	Yes, one way traffic flow
Supply notes	Emergency fire emergency use only site. Fast flow set-up and can load 6 vehicles at once. Pump from dam refills tanks automatically.
Emergency access contacts	SoBB CBFCA – Ben Thompson 0427 673 072 Land Manager – Michael Wright 0427 191 785

Flax Mill tanks

Flax Mill tanks - site images



Aerial view of Flax Mill tanks



Location map



Three of the six tanks at the site



Three of the six tanks at the site



Standpipe

Flax Mill tanks - site description

Vesting	Shire of Boyup Brook
Purpose	Strategic community water supply for emergency stock water and fire fighting
Associated reserve	N/A
Catchment type	Roof runoff
Catchment area (ha)	0.37 ha

Location and coordinates

Location: Lot 336 Jackson Street, Flax Mill Caravan Park, Boyup Brook

Latitude	-33.83351
Longitude	116.401107
Eastings	444585.722
Northings	6256148.144

Water supply and access

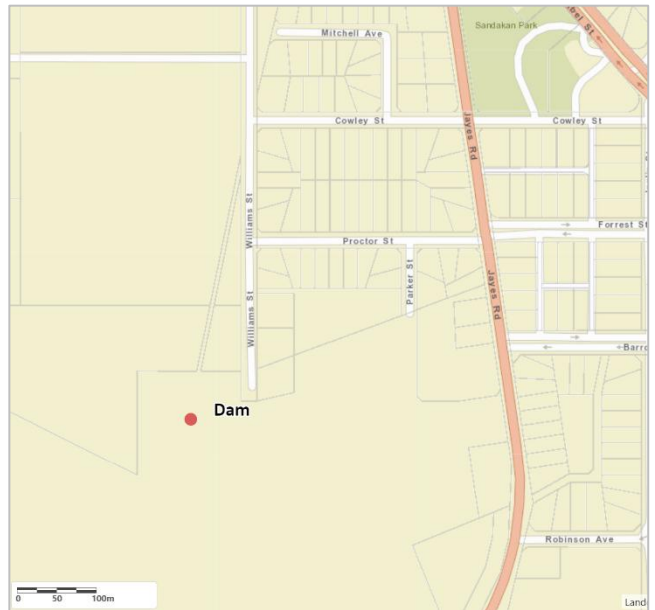
Structure type	Steel tanks x 6
Tank capacity	5 x 250,000 litres, 1 x 150,000
Camlock coupling sizes	(3 inch) and 100 mm (4 inch) outlets
Standpipe Y/N	Yes
Swipe Card Y/N	No - Key access from shire
Pump available Y/N	Yes
Heavy vehicle access	Yes
Turnaround area	Yes
Emergency access contacts	Shire Depot – 9765 1220 – AH: 0419 777 033

Railway Reserve dam

Railway Reserve dam - site images



Aerial view of Railway Reserve dam



Location map



Railway Reserve dam

Railway Reserve dam - site description

Vesting	Shire of Boyup Brook
Purpose	Strategic community water supply for firefighting water only
Associated reserve	R16199
Catchment type	Earth
Catchment area (ha)	46 ha

Location and coordinates

Location: William Street, Boyup Brook

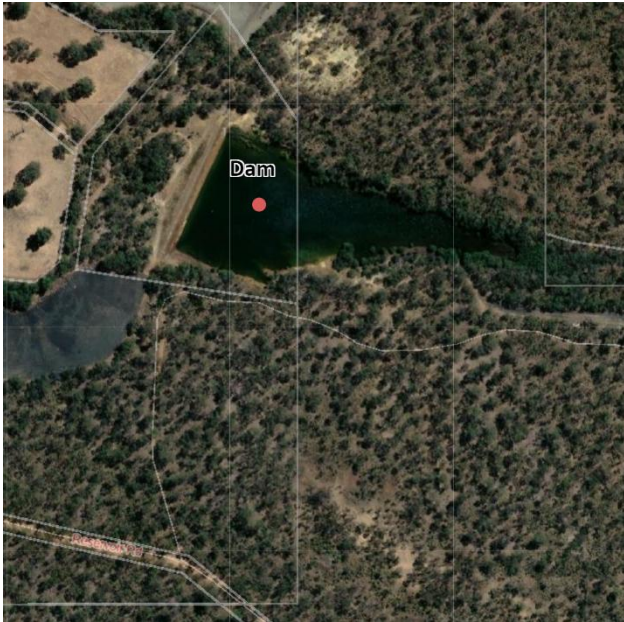
Latitude	-33.835802
Longitude	116.380477
Eastings	442723.709
Northings	6255882.097

Water supply and access

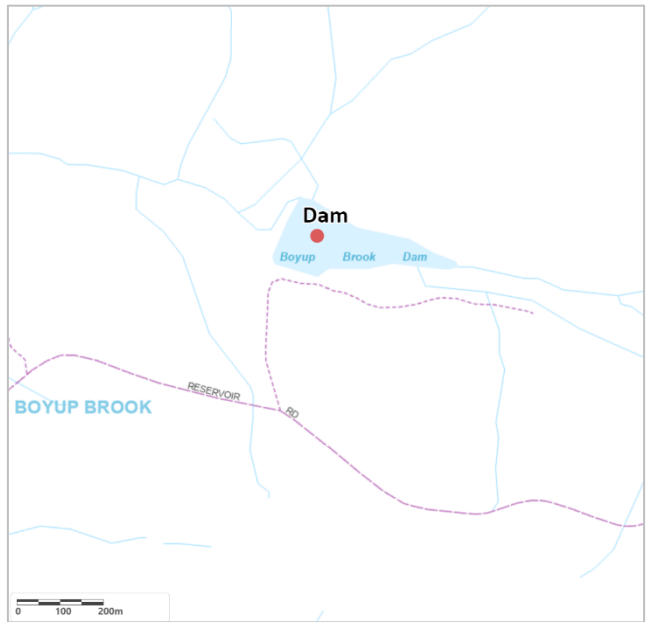
Structure type	Concrete dam
Capacity	7,646,540 litres
Standpipe Y/N	No
Pump available Y/N	No
Heavy vehicle access	No
Turnaround area	No
Emergency access contacts	Shire Depot – 9765 1220 – AH: 0419 777 033

Reservoir Road dam

Reservoir Road dam - site images



Aerial view of Reservoir Road dam



Location map



Reservoir Road dam



Temporary standpipe

Reservoir Road dam - site description

Vesting	Water Corporation (Standing agreement with Shire regarding use in fire emergencies and drought)
Purpose	Strategic community water supply for emergency stock water and fire fighting
Associated reserve	R 47025
Catchment type	Earth
Catchment area (ha)	92.7

Location and coordinates

Location: Reservoir Road, Boyup Brook

Latitude	-33.849111
Longitude	116.438158
Eastings	447986.417
Northings	6254430.940

Water supply and access

Structure type	Dam
Dam capacity	Unknown
Tank storage	Nil
Standpipe Y/N	No, temp standpipe can be installed as required
Pump available Y/N	No, temp pump can be installed as required
Heavy vehicle access	Yes
Turnaround area	Yes
Supply notes	Water Corporation authorisation required for use of water
Emergency access contacts	Shire Depot – 9765 1220 – AH: 0419 777 033

Sporting Rec dam

Sporting Rec dam - site images



Aerial view of Sporting Rec dam



Location map



Sporting Rec dam



Signage at Sporting Rec dam entrance

Sporting Rec dam - site description

Vesting	Shire of Boyup Brook
Purpose	Strategic community water supply for emergency stock water and fire fighting
Associated reserve	R 1454
Catchment type	Roads and drains
Catchment area (ha)	Unknown

Location and coordinates

Location: Beatty Street (Sports Complex)

Latitude	-33.840374
Longitude	116.395224
Eastings	443992.794
Northings	6255483.822

Water supply and access

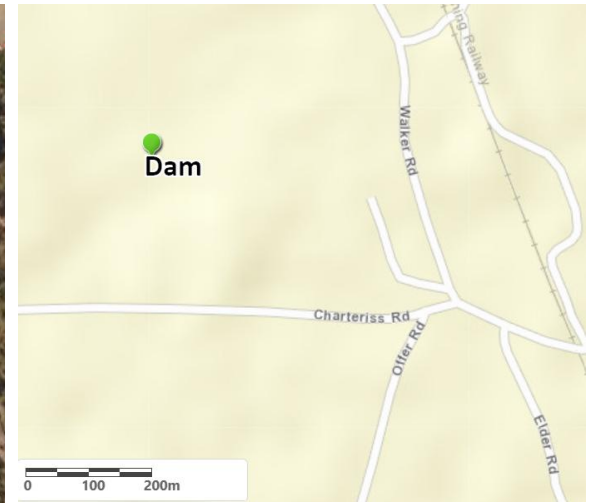
Structure type	Dam
Capacity	~18 000m ³
Tank storage	Nil
Standpipe Y/N	No
Swipe card Y/N	No
Pump available Y/N	Yes
Heavy vehicle access	Yes
Turnaround area	Yes
Supply Comments	Primary use to reticulate sports complex – Refilled from Depot Dam.
Emergency access contacts	Shire Depot – 9765 1220 – AH: 0419 777 033

Wilga town dam

Wilga town dam - site images



Aerial view of Wilga town dam



Location map



Wilga town dam

Wilga town dam - site description

Vesting	Shire of Boyup Brook
Purpose	Strategic community water supply for emergency stock water and fire fighting
Associated reserve	R 46750
Catchment type	Earth
Catchment area (ha)	9.8

Location and coordinates

Location: Wilga Townsite

Latitude	-33.693163
Longitude	116.224369
Eastings	428740.329
Northings	6271496.611

Water supply and access

Structure type	Dam
Capacity	Unknown
Tank storage	No
Standpipe Y/N	No, temp standpipe can be installed for emergencies
Swipe card Y/N	No
Pump available Y/N	No, can connect fast-fill trailer
Heavy vehicle access	No – 4x4 access by light vehicles only
Turnaround area	No
Supply Comments	Currently utilised by some residents to supplement daily water usage. Access tracks and turnaround points to be upgraded in 2026.
Emergency access contacts	Benjinup BFB – Rob Imrie 0428 899 049

Mayanup Hall fire emergency tank

Mayanup Hall fire emergency tank - site images



Aerial view of Mayanup Hall fire emergency tank



Location map



Mayanup Hall fire emergency tank

Mayanup Hall fire emergency tank - site description

Vesting	Shire of Boyup Brook
Purpose	Strategic community water supply for emergency stock water and fire fighting
Associated reserve	R 20039
Catchment type	Rooftop
Catchment area (ha)	0.03 ha

Location and coordinates

Location: 1 Main Street, Mayanup

Latitude	-33.932468
Longitude	116.452475
Eastings	449396.983
Northings	6245196.826

Water supply and access

Structure type	Tank
Capacity	88 860.0 litres
Camlock coupling sizes	3" and 2" outlets
Standpipe Y/N	No, temp standpipe can be installed for emergencies
Pump available Y/N	No, can connect fast-fill trailer
Heavy vehicle access	Yes
Turnaround area	Yes
Emergency access contacts	Mayanup BFB – Ben Creek 0428 158 138

Tonebridge fire emergency tank

Tonebridge fire emergency tank - site images



Aerial view of Tonebridge fire emergency tank



Location map



Tank outlet



Tank outlet



Tonebridge fire emergency tank

Tonebridge fire emergency tank - site description

Vesting	Shire of Boyup Brook
Purpose	Strategic community water supply for emergency stock water and fire fighting
Associated reserve	R 24951
Catchment type	Rooftop
Catchment area (ha)	0.02 ha

Location and coordinates

Location: Tonebridge Country Club - Boyup Brook-Cranbrook Rd, Tonebridge

Latitude	-34.235064
Longitude	116.71783
Eastings	474014.169
Northings	6211744.094

Water supply and access

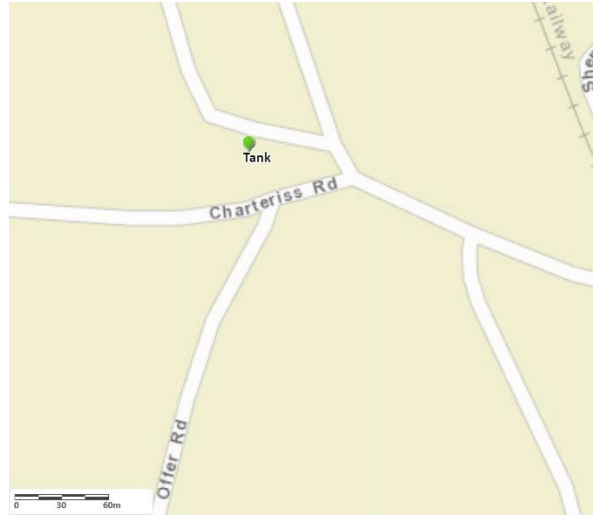
Structure type	Tank
Capacity	88 860.0 litres
Camlock coupling sizes	3" and 2" outlets
Standpipe Y/N	No, temp standpipe can be installed for emergencies
Pump available Y/N	No, can connect fast-fill trailer
Heavy vehicle access	Yes
Turnaround area	Yes
Emergency access contacts	Tonebridge BFB – Matt Della-Gola 0427 767 177

Wilga Hall fire emergency tank

Wilga Hall fire emergency tank - site images



Aerial view of Wilga Hall and tank



Location map



Wilga Hall fire emergency tank

Wilga Hall fire emergency tank - site description

Vesting	Shire of Boyup Brook
Purpose	Strategic community water supply for emergency stock water and fire fighting
Associated reserve	R 20229
Catchment type	Rooftop
Catchment area (ha)	0.02 ha

Location and coordinates

Location: 17 Walker Rd, Wilga

Latitude	-33.695047
Longitude	116.228874
Eastings	428533.887
Northings	6271388.957

Water supply and access

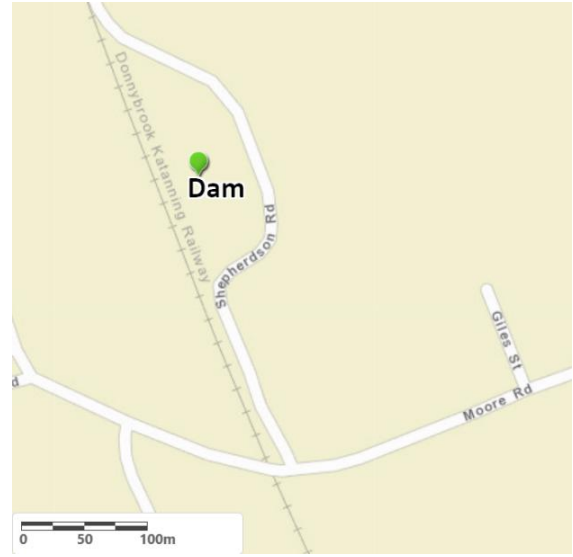
Structure type	Tank
Capacity	88 860.0 litres
Camlock coupling sizes	3" and 2" outlets
Standpipe Y/N	No, temp standpipe can be installed for emergencies
Pump available Y/N	No, can connect fast-fill trailer
Heavy vehicle access	Yes
Turnaround area	Yes
Emergency access contacts	Benjinup BFB – Rob Imrie 0428 899 049

Wilga Old Railway dam

Wilga Old Railway dam - site images



Aerial view of Wilga Old Railway dam



Location map



Wilga Old Railway dam

Wilga Old Railway dam - site description

Vesting	Shire of Boyup Brook
Purpose	Strategic community water supply for emergency stock water and firefighting
Associated reserve	R 29177
Catchment type	Earth
Catchment area (ha)	9

Location and coordinates

Location: 17 Walker Rd, Wilga

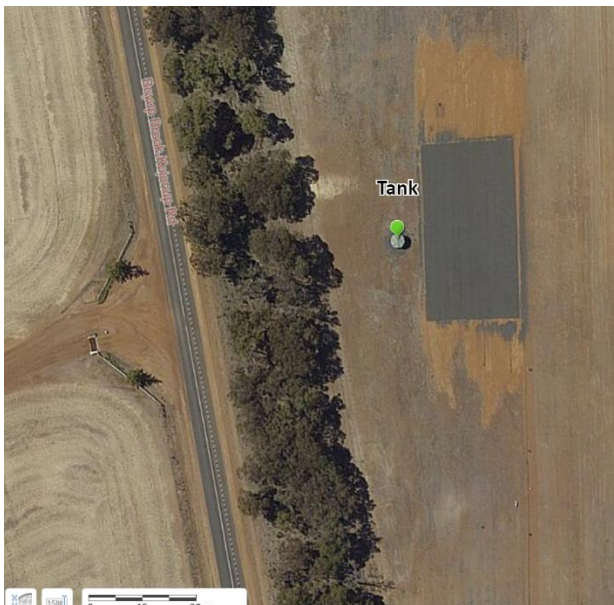
Latitude	-33.693784
Longitude	116.231163
Eastings	428744.989
Northings	6271530.576

Water supply and access

Structure type	Dam
Capacity	Unknown
Standpipe Y/N	No, temp standpipe can be installed for emergencies
Pump available Y/N	Yes – Key required to access
Heavy vehicle access	Yes
Turnaround area	Yes
Emergency access contacts	Benjinup BFB – Rob Imrie 0428 899 049

Boyup Brook Airstrip tank

Boyup Brook Airstrip tank - site images



Aerial view of Boyup Brook Airstrip tank



Location map



Airfield tank refilling water bomber aircraft training

Boyup Brook Airstrip Tank - site description

Vesting	DBCA
Purpose	Strategic community water supply for firefighting water and water bomber reloading
Associated reserve	N/A
Catchment type	Earth – Pumped from neighbour's dam
Catchment area (ha)	9

Location and coordinates

Location: 833 Boyup Brook-Kojonup Rd, Mayanup

Latitude	-33.899013
Longitude	116.449194
Eastings	449073.847
Northings	6248904.642

Water supply and access

Structure type	Poly Tank
Tank capacity	25 000 litres
Camlock coupling sizes	3 inch
Standpipe Y/N	No, temp standpipe can be installed for emergencies
Swipe Card Y/N	No
Pump available Y/N	Yes – Water Bomber Reloader Trailer and Equipment
Heavy vehicle access	Yes
Turnaround area	Yes
Emergency access contacts	CBFCO – Ben Thompson 0428 899 049

Glossary

AA	Agricultural Areas dam works program.
Camlock	A male hose coupling fixed for connection of a water hose. Camlocks can be attached to fill points, such as tanks or standpipes, to allow access to water supply. Camlock sizes vary from site to site and generally include 50 mm (2 inch) or 80 mm (3 inch) as standard. At some sites, a 100 mm (4 inch) camlock is included for firefighting purposes.
Catchment types	<p>Earth – land cleared, cambered, and compacted to provide a catchment area for surface water.</p> <p>Bitumen – catchment lined with bitumen to allow capture of surface water.</p> <p>Rock catchment – rock that slopes, has containment walls to capture surface water to a storage source (e.g. a tank or a concrete dam).</p> <p>Bore – a drilled casing that accesses ground water to provide a water supply.</p> <p>CBH – water captured from a CBH grain silo storage facility and stored in a dam or tank.</p>
CBFCO	Chief Bush Fire Control Officer.
CWSP	Community Water Supplies Partnership program.
Farmbot	<p>A device fitted to some tanks that regularly records the water level and feeds the information to a website. Click on the link below (or copy and paste into your browser) to access the website and see water levels in Farmbot-equipped tanks:</p> <p style="text-align: center;">app.farmbot.com.au (Login ID: public.access Password: access1)</p>
Fill point	Location where a water supply can be accessed using camlock fittings either via standpipe, swipe card system, tank or bore.
Non-potable	Water not suitable for human consumption.
SCWS	Strategic Community Water Supplies.
Solar pump	A pump powered by solar energy that pumps water from one location to another (e.g. from dam to dam or from dam to tank).
Staff gauges	A marker measuring tool positioned at surveyed depths in a dam to indicate water levels.
Standpipe	A pipe overhead, on a plinth or raised off the ground to provide a fill point for water supply.
Swipe card	A metered fill point requiring a card to be swiped to start pumping system. Contact the relevant local government for further information.
The Department	The Department of Water and Environmental Regulation.
Vesting	Person or governing agency with responsibility for managing land.
Water Corp.	Water Corporation.

Department of Water and Environmental Regulation
Prime House
8 Davidson Terrace
Joondalup Western Australia 6027

Locked Bag 10, Joondalup DC WA 6919

Phone: 08 6364 7000
Fax: 08 6364 7001
National Relay Service 13 36 77
wa.gov.au/dwer

25261063